

For Lease



Retail pad available



20315 Route 19
Cranberry Township, PA 16066

Highlights

- 1.21 AC site
- Former restaurant building
- Abundant parking
- Pylon signage available
- Strong demographics
- Great co-tenancy



Michelle Stewart

Senior Vice President

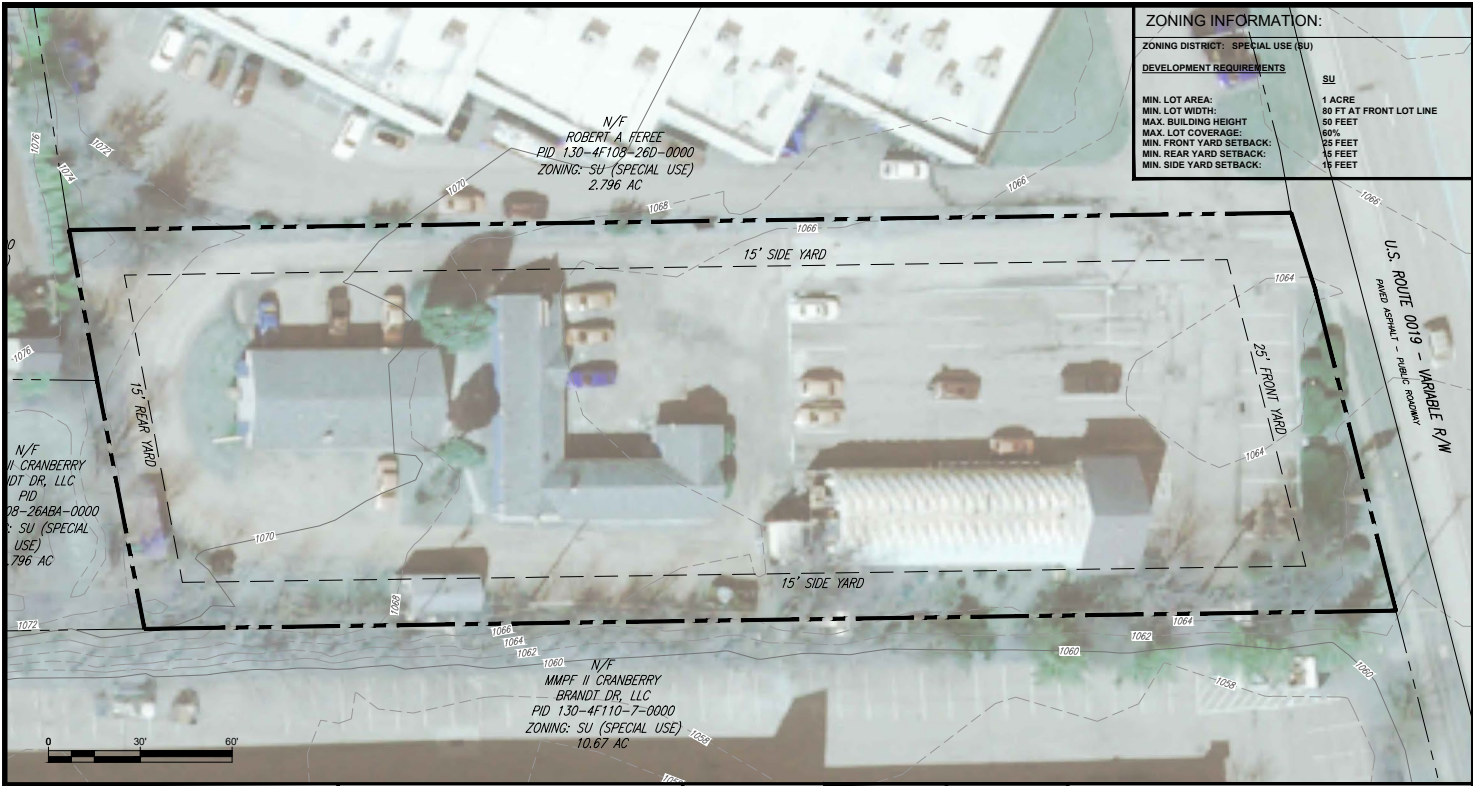
michelle.stewart@jll.com

+1 412 849 5726

jll.com

Jones Lang LaSalle Americas, Inc.

Site Plan



Demographics

1-mile	
Population	3,943
Daytime Population	9,722
Households	1,705
Average Household Income	\$137,356
3-miles	
Population	31,131
Daytime Population	126,052
Households	15,340
Average Household Income	\$139,509
5-miles	
Population	43,160
Daytime Population	197,614
Households	27,255
Average Household Income	\$145,429



Trade area

