



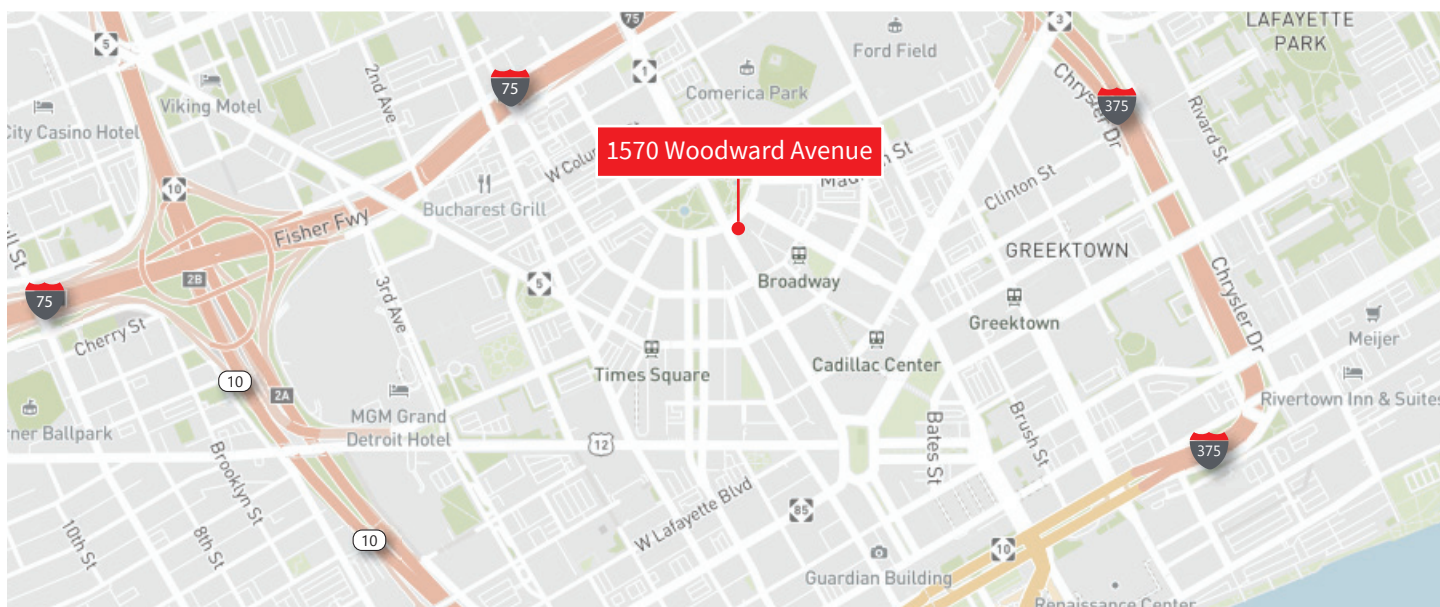
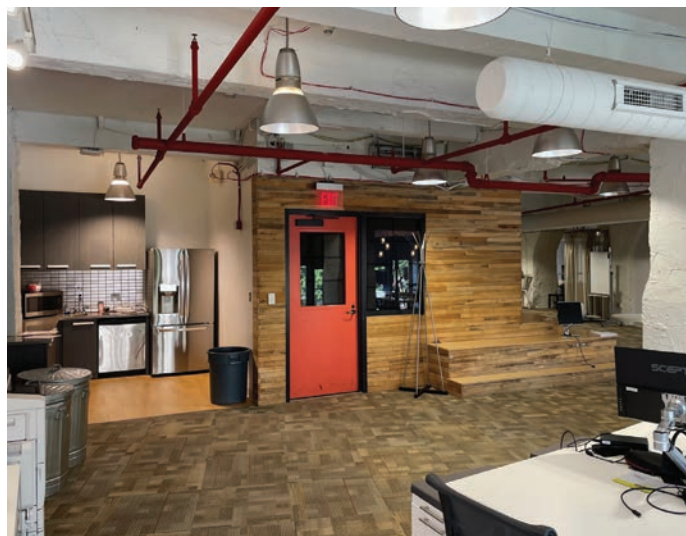
# For Sublease

1570 Woodward Avenue | Detroit, MI  
4,913 RSF Available

## Suite 300 | 4,913 RSF

### Suite Details

- Term through 10/31/2026
- Newly Improved Creative Space Available
- Move-In Ready with Furniture
- Located in the heart of downtown and steps to Entertainment District
- Rare Office Opportunity in Broderick Tower



**JLL**

**Anne Knopke**

*Vice President*

[anne.knopke@jll.com](mailto:anne.knopke@jll.com)

+1 248 581 3336



## Suite Photos

Suite 300 | 4,913 RSF



**JLL**

**Anne Knopke**

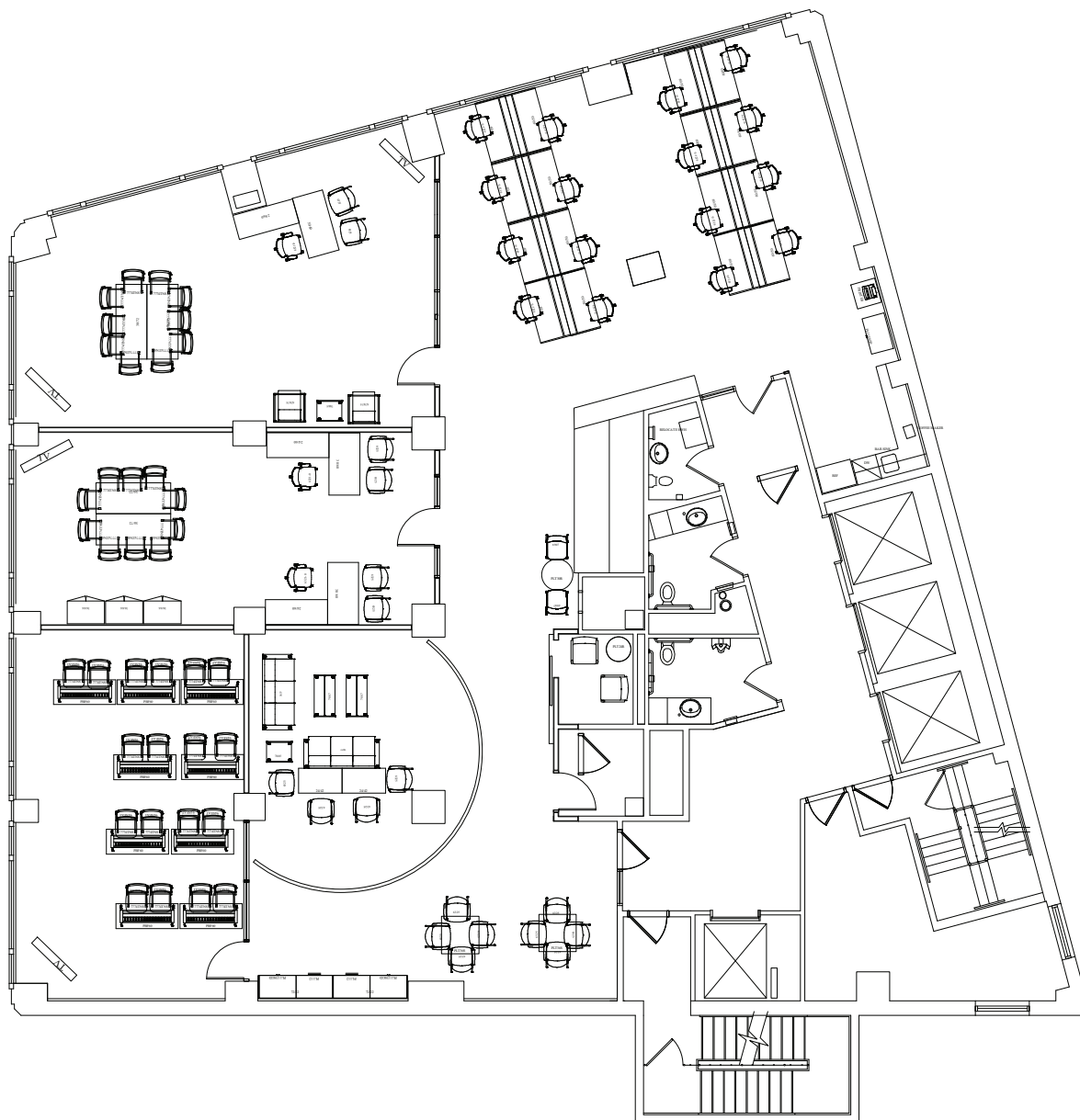
*Vice President*

[anne.knopke@jll.com](mailto:anne.knopke@jll.com)

+1 248 581 3336

# Floor Plan

Suite 300 | 4,913 RSF



**JLL**

**Anne Knopke**

*Vice President*

[anne.knopke@jll.com](mailto:anne.knopke@jll.com)

+1 248 581 3336