

# For Sublease

1505 5th Avenue  
Seattle, WA 98101

8,114 - 25,814 RSF creative office

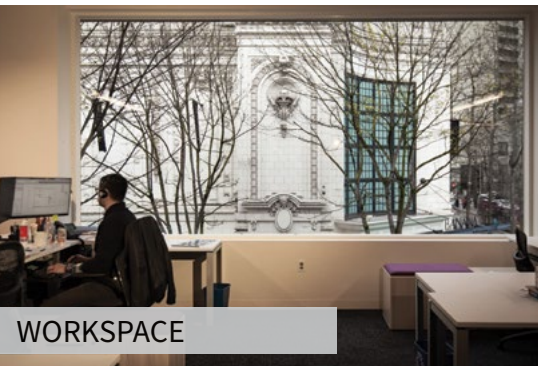


## Space highlights

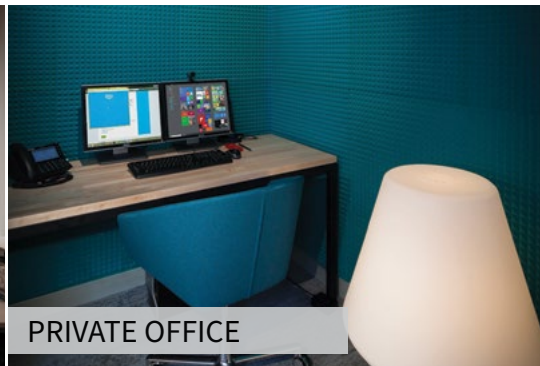
- Partial 2nd floor available: 8,114 RSF
- Full floors 2 and 3 available: 25,814 RSF
- Available within 30 days
- Good credit sublandlord
- Sublease term through 9/30/2026, longer terms available direct
- \$40.00/SF FSG

## Features

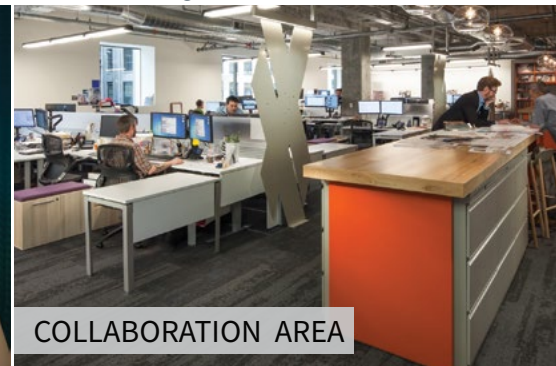
- Premium metal duct work and finishes in excellent condition throughout the space.
- High-end creative space with exposed ceilings in a boutique building.
- Located in Seattle's retail core with many restaurants and shopping nearby



WORKSPACE



PRIVATE OFFICE

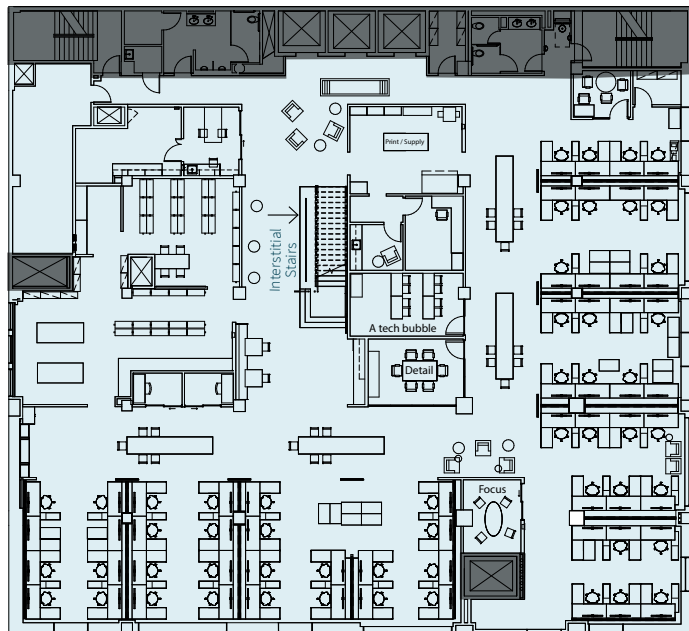
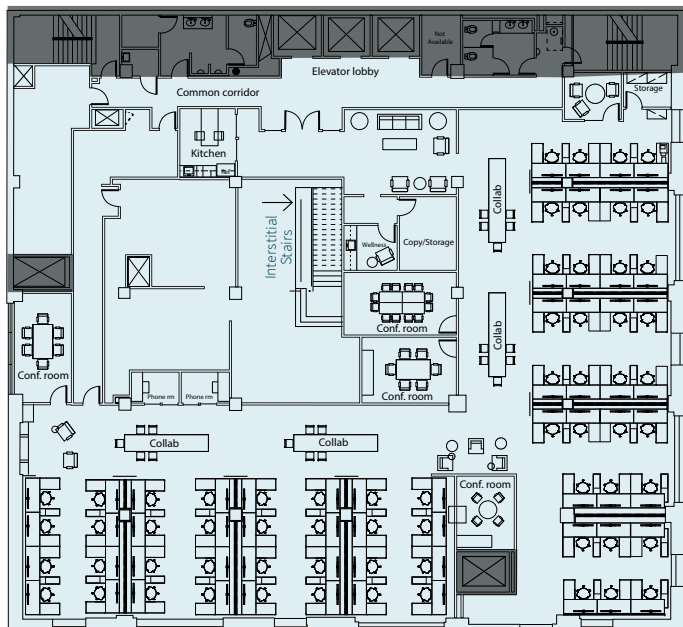


COLLABORATION AREA

1505 5th Avenue / Seattle

FLOOR 2 & FLOOR 3

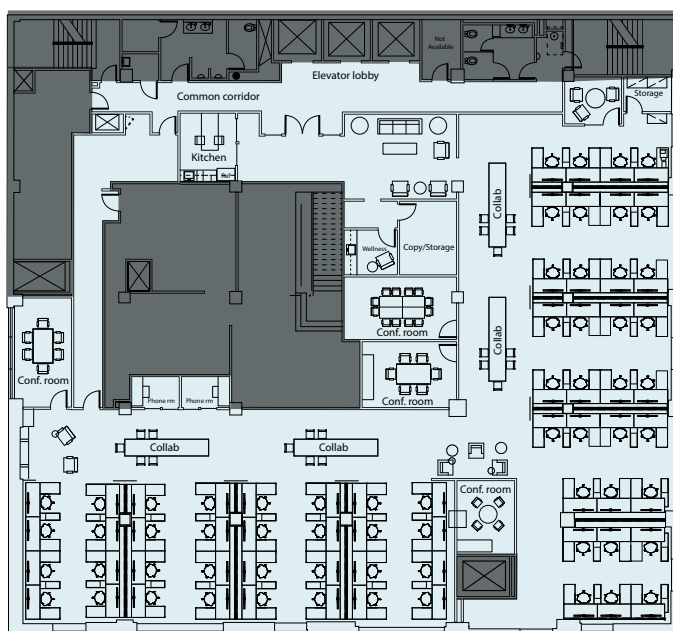
**25,814 RSF**  
available



\*floors 2 and 3 must be leased together

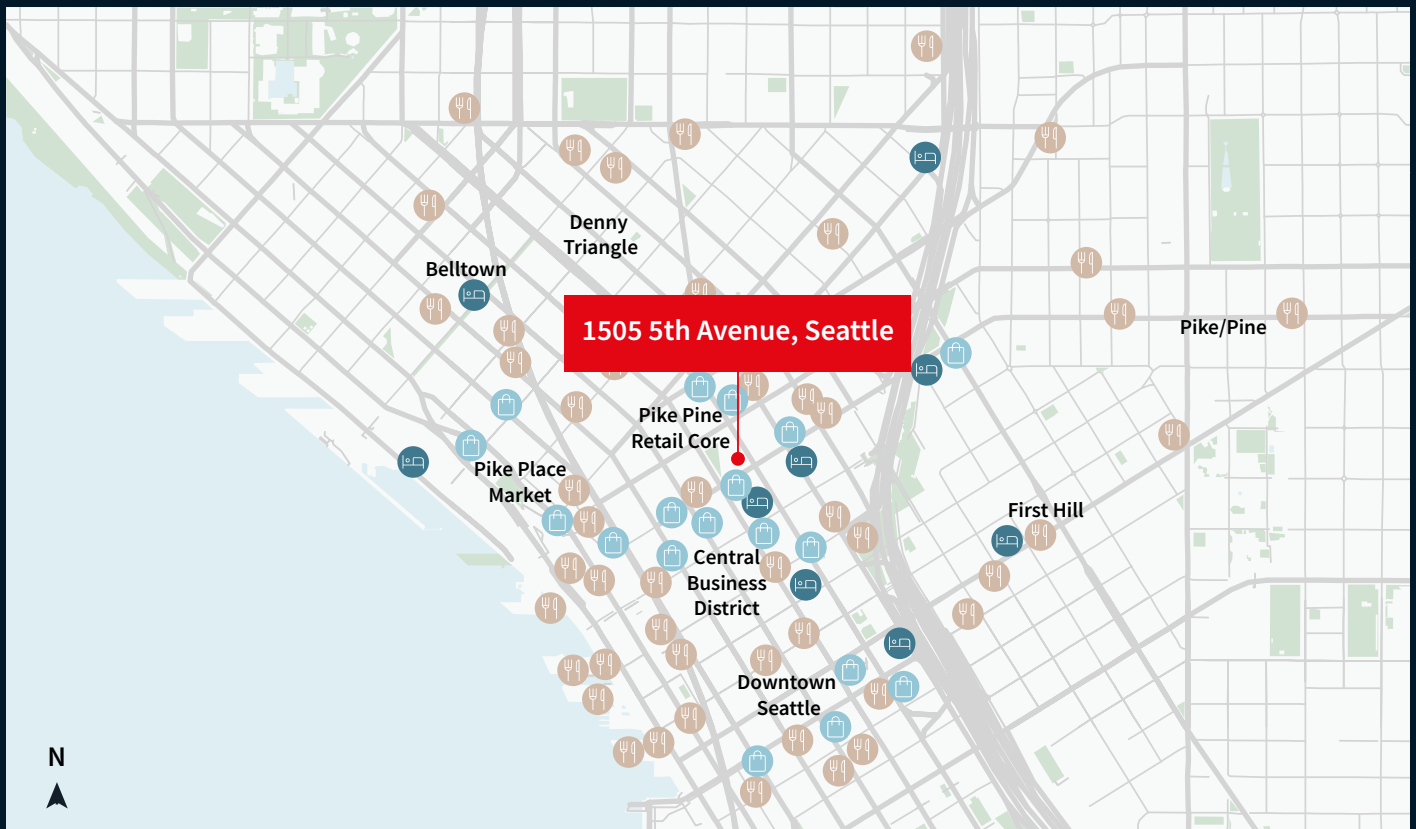
PARTIAL 2ND FLOOR

**8,114 RSF**  
available



# Sublease Available

8,114 - 25,814 RSF creative office



[www.jll.com/seattle](http://www.jll.com/seattle)

**JLL**

**Rob Nielsen**

*Licensed in WA*

[rob.nielsen@jll.com](mailto:rob.nielsen@jll.com)

+1 206 607 1722

Although information has been obtained from sources deemed reliable, JLL does not make any guarantees, warranties or representations, express or implied, as to the completeness or accuracy as to the information contained herein. Any projections, opinions, assumptions or estimates used are for example only. There may be differences between projected and actual results, and those differences may be material. JLL does not accept any liability for any loss or damage suffered by any party resulting from reliance on this information. If the recipient of this information has signed a confidentiality agreement with JLL regarding this matter, this information is subject to the terms of that agreement. ©2024. Jones Lang LaSalle IP, Inc. All rights reserved.