



COLTON

COMMERCE CENTER

Strategically Located 500 Feet From The I-10 Interchange











Jones Lang LaSalle Brokerage, Inc. RE license #01856260



2245 WEST VALLEY BLVD, COLTON, CA
Four-Building Development Ranging From 39,900 SF To 49,874 SF
With Above Market Standard Dock Doors & Private Secured Parking



Property Highlights

	BUILDING 1	BUILDING 2	BUILDING 3	BUILDING 4
 Building SF	±46,384	±49,874	±39,900	±45,965
 Office SF	±4,000	±4,000	±4,000	±4,000
 Clear height	±30'	±30'	±30'	±30'
 Dock high doors	8	7	7	8
 Grade level doors	1	1	1	1
 Power	±1,200 AMPS	±1,200 AMPS	±1,200 AMPS	±1,200 AMPS
 Car parking	±70	±75	±53	±60
 Sprinklers	ESFR	ESFR	ESFR	ESFR

Colton's Premier Industrial Hub At I-10 and I-215 Nexus



FREEWAYS

I-10 Freeway	500 Feet
215 Freeway	4.3 Mi
I-15 Freeway	10.5 Mi
210 Freeway	11.3 Mi



AIRPORTS

Ontario Intl	13.2 Mi
San Bernardino Intl	9.6 Mi
John Wayne	50.9 Mi
LAX	69.6 Mi



INTERMODAL/PORTS

Union Pacific Intermodal Yard	2.2 Mi
BNSF Intermodal Yard	5.0 Mi
Port of Long Beach	74.4 Mi
Port of Los Angeles	75.9 Mi



NOTABLE TENANTS IN THE SUBMARKET

There has been a continued gravitation towards this area by a wide range of users across the e-commerce, consumer goods, food and beverage, apparel, and automotive industries.

Amazon occupies eight different industrial assets within a 20-mile radius of the Project that collectively total more than 6.45M SF.

Target operates two distribution centers about 6-miles north of the Project that respectively measure 1.6M and 1.5M SF.

Other noteworthy tenants nearby include:

1,197,051 SF
Under Armour

434,555 SF
Monster

758,940 SF
Kellogg's

739,736 SF
Staples

796,841 SF
Living Spaces

384,097 SF
FedEx

Site Plan



Number of buildings

4



Building sizes

39,900 SF to 49,874 SF



Clear height
30'



Dock doors
30



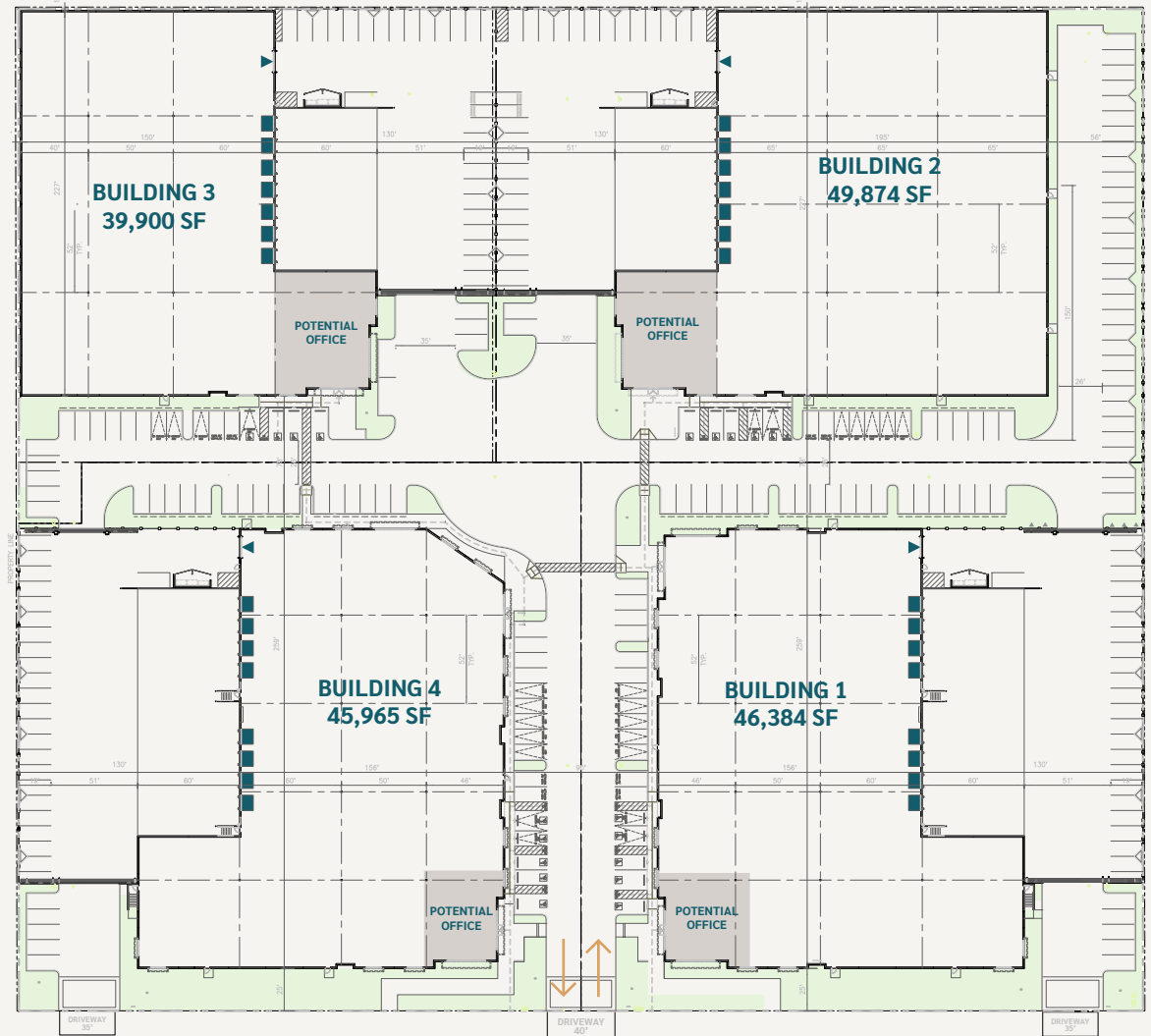
Office SF
±16,000 SF




Power
±1,200 AMPS




Fire sprinkler protection
ESFR



 Dock doors

 Grade level doors

 Potential office



Building 1

Floor Plan



Building size
±46,384 SF



Clear height
30'



Dock doors
8



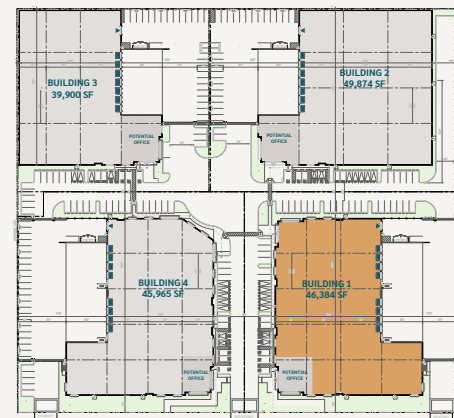
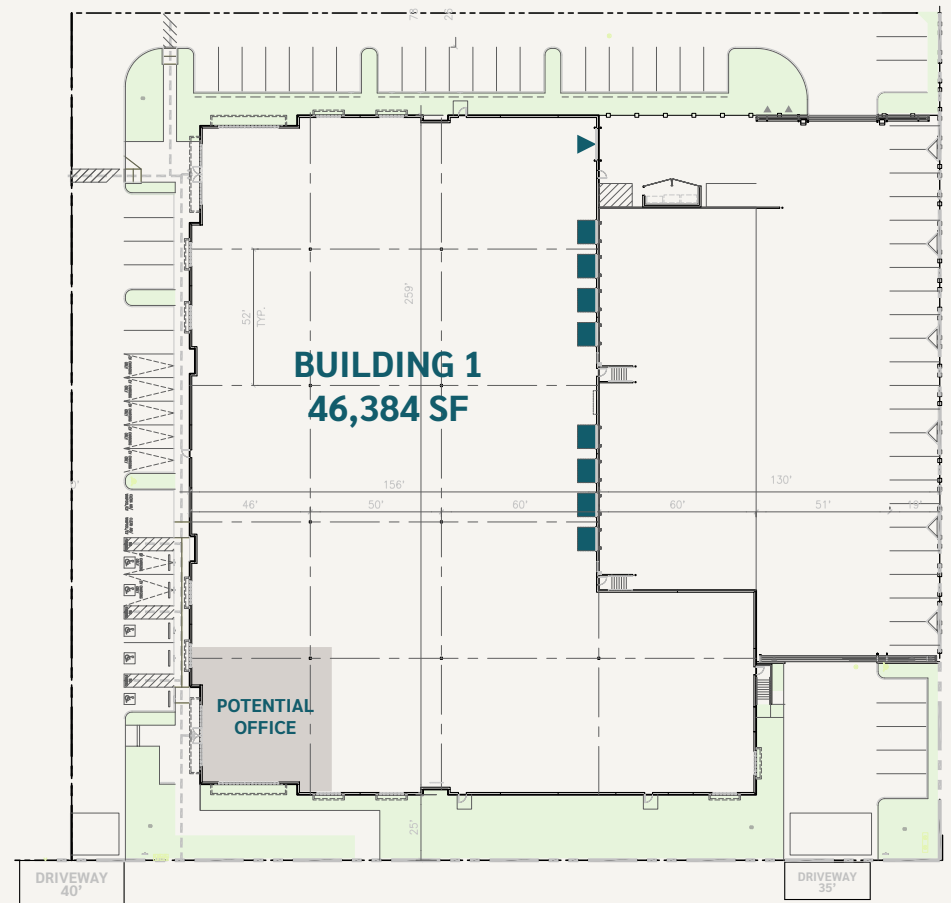
Office SF
±4,000 SF



Power
±1,200 AMPS



Fire sprinkler protection
ESFR



- Dock doors
- Grade level doors
- Potential office



Building 2

Floor Plan



Building size
±49,874 SF



Clear height
30'



Dock doors
7



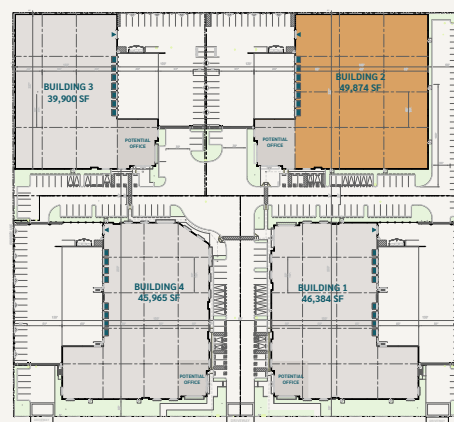
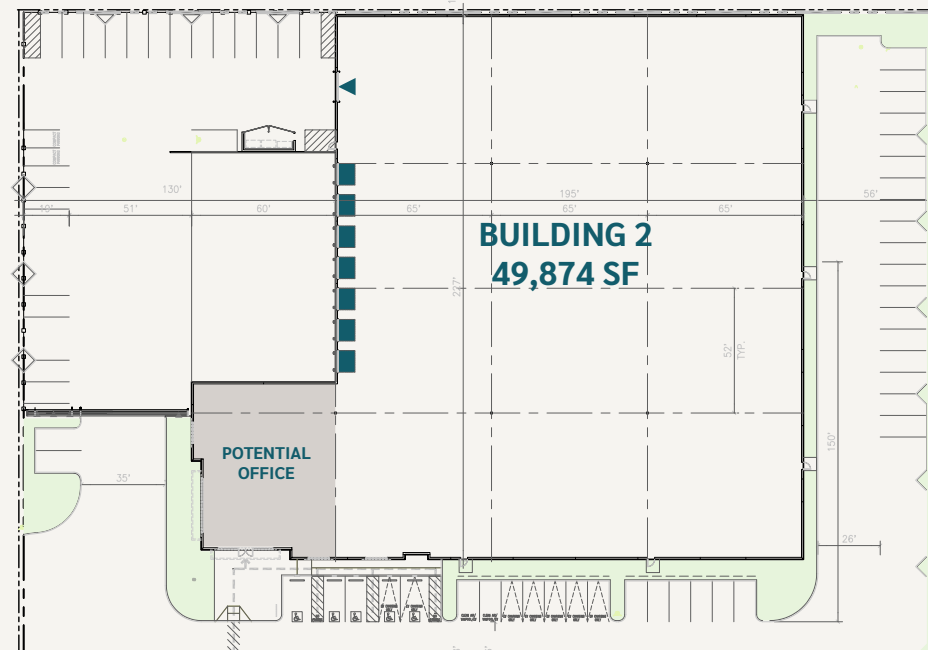
Office SF
±4,000 SF



Power
±1,200 AMPS



Fire sprinkler protection
ESFR



- Dock doors
- Grade level doors
- Potential office



Building 3

Floor Plan



Building size
±39,900 SF



Clear height
30'



Dock doors
7



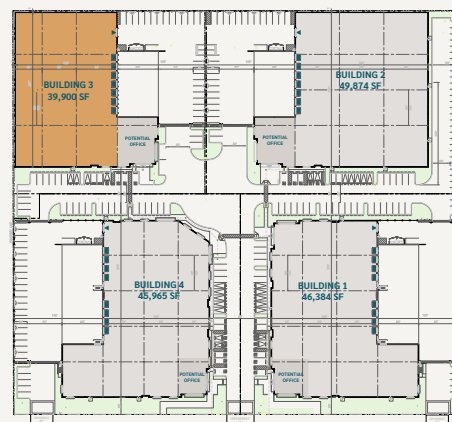
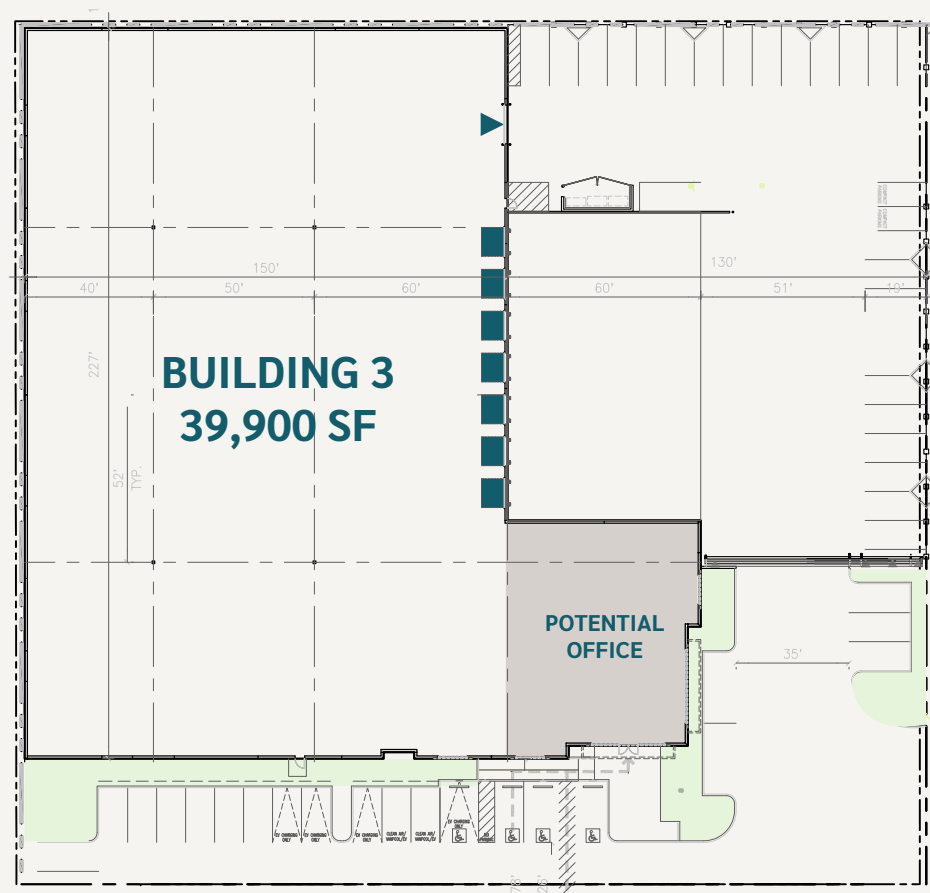
Office SF
±4,000 SF



Power
±1,200 AMPS



Fire sprinkler protection
ESFR



- Dock doors
- Grade level doors
- Potential office



Building 4

Floor Plan



Building size
±45,965 SF



Clear height
30'



Dock doors
8



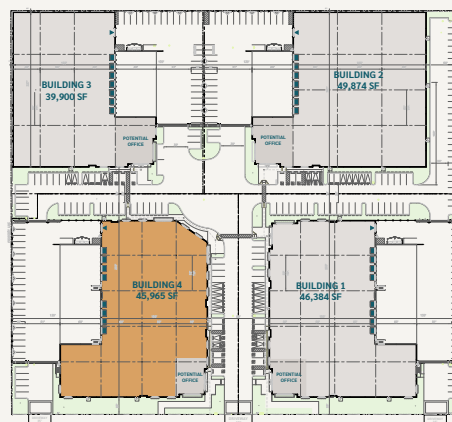
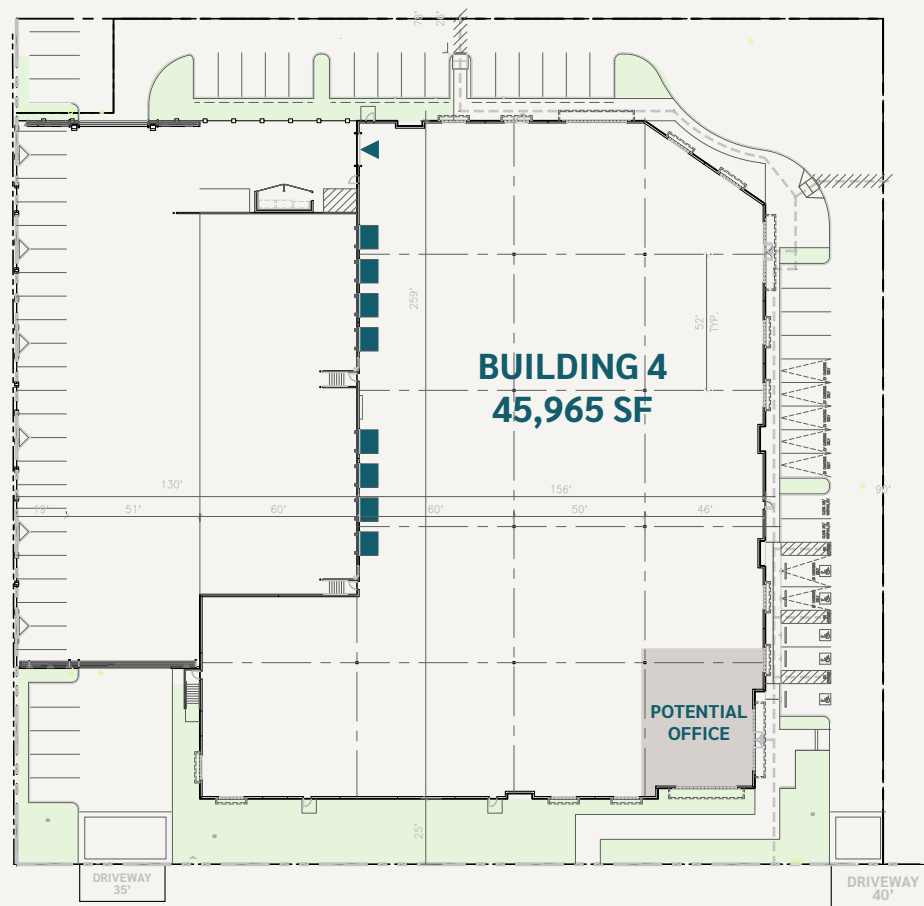
Office SF
±4,000 SF



Power
±1,200 AMPS



Fire sprinkler protection
ESFR



- Dock doors
- Grade level doors
- Potential office





COLTON

COMMERCE CENTER



Although information has been obtained from sources deemed reliable, neither Owner nor JLL makes any guarantees, warranties or representations, express or implied, as to the completeness or accuracy as to the information contained herein. Any projections, opinions, assumptions or estimates used are for example only. There may be differences between projected and actual results, and those differences may be material. The Property may be withdrawn without notice. Neither Owner nor JLL accepts any liability for any loss or damage suffered by any party resulting from reliance on this information. If the recipient of this information has signed a confidentiality agreement regarding this matter, this information is subject to the terms of that agreement.
©2024 Jones Lang LaSalle IP, Inc. All rights reserved.

SCOTT COYLE
RE License #02066670
Executive Vice President
scott.coyle@jll.com
+1 916 662 5826

CODY CLAYTON
RE License #02006423
Managing Director
cody.clayton@jll.com
+1 310 977 1377

JAY CUCCIA
RE License #02116318
Vice President
jay.cuccia@jll.com
+1 909 467 6911