



For sublease

Industrial warehouse
available in Grimes

17,500 RSF

2400 Enterprise Dr.
Grimes, Iowa 50111

Property specifications

Lease rate: \$8.50/PSF NNN

Lease expiration: 7/31/2027

Est. OPEX: Available upon request

- Clear height: 30'
- (3) Dock Doors
- (1) Drive-in Door
- 3-Phase Power
- Outdoor storage allowed in the truck court
- Existing office, breakroom, and restrooms
- Total building size: 80,800 SF
- Located 2.1 Miles NW of Interstate 80/35 off Highway 141

Contact broker for
additional information

jll.com/des-moines
Jones Lang LaSalle Brokerage, Inc.

Tanner Hedstrom
Vice President
+1 515 745 2734
tanner.hedstrom@jll.com

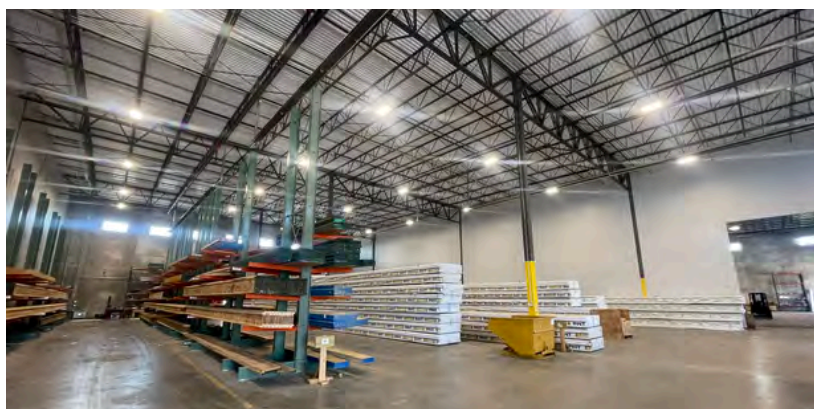
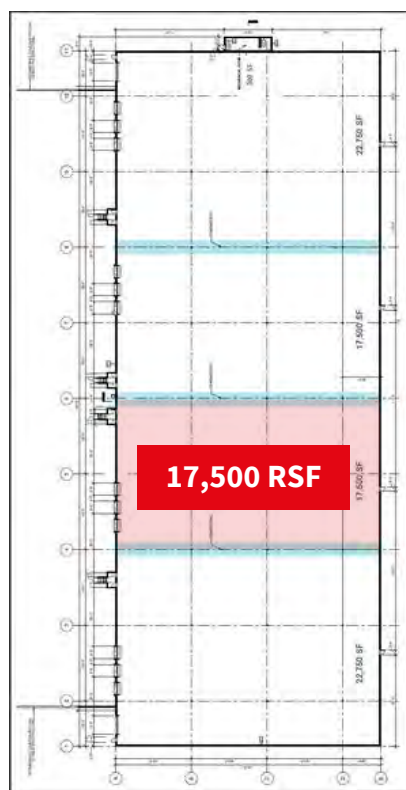
Marcus R. Pitts, CCIM, SIOR
Senior Managing Director
+1 515 556 4727
marcus.pitts@jll.com

Austin Hedstrom, SIOR
Executive Vice President
+1 515 414 1767
austin.hedstrom@jll.com

For sublease

17,500 SF Industrial space available in Grimes, Iowa

Floor plan



Tanner Hedstrom
tanner.hedstrom@jll.com

Marcus R. Pitts, CCIM, SIOR
Marcus.Pitts@jll.com

Austin Hedstrom, SIOR
Austin.Hedstrom@jll.com

jll.com/des-moines

Although information has been obtained from sources deemed reliable, neither Owner nor JLL makes any guarantees, warranties or representations, express or implied, as to the completeness or accuracy as to the information contained herein. © 2024 Jones Lang LaSalle IP, Inc. All rights reserved.

