



# TRUENORTH

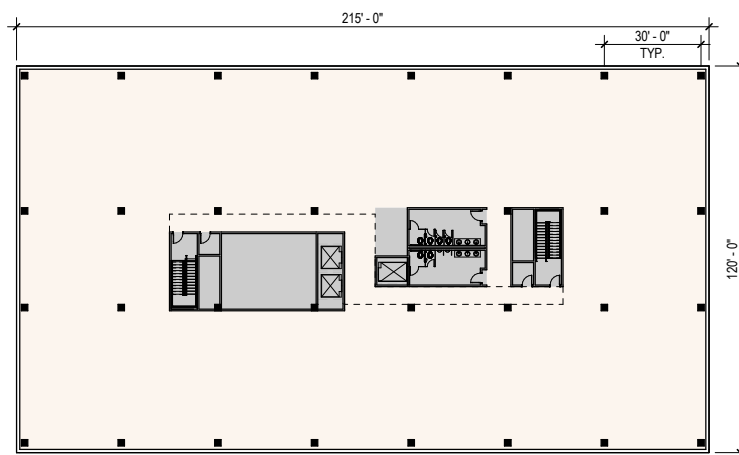
## COMMONS

### Where innovation takes flight

200,000 RSF OF TROPHY OFFICE AT THE AIR FORCE ACADEMY IN COLORADO SPRINGS

#### The sky is the limit

- **100,000 RSF**  
Phase I Total Building
- **+100,000 RSF**  
Phase II Total Building
- **25,000 RSF**  
Typical Floorplate
- **4 Stories**
- **SCIF**  
Customization Ready



#### Amenities at TrueNorth Commons



AIR FORCE ACADEMY  
Visitor Center



RETAIL CENTER



HOTEL POLARIS



ON-SITE PARKING

- 679 Surface Spaces
- 40 Covered Spaces
- 719 Total Spaces



FITNESS CENTER  
On-site



BIKE STORAGE  
On-site

Ascend Spa & Wellness  
Fitness Center  
26,000 SF Conference Room  
Outdoor Terrace  
Flight Simulator  
Restaurant, Dining &  
Rooftop Bar



## Prepare for lift off

# \$10B

INCREASE IN COLORADO  
SPRINGS GDP SINCE 2015

# RANKED #1

MOST DESIRABLE PLACE  
TO LIVE '19, '20, '21  
*US News & World Report*

## Drive Times

- **2 minutes** to North Gate
- **5 minutes** to Interquest
- **28 minutes** to  
CO Springs Airport
- **50 minutes** to  
Denver Int'l Airport

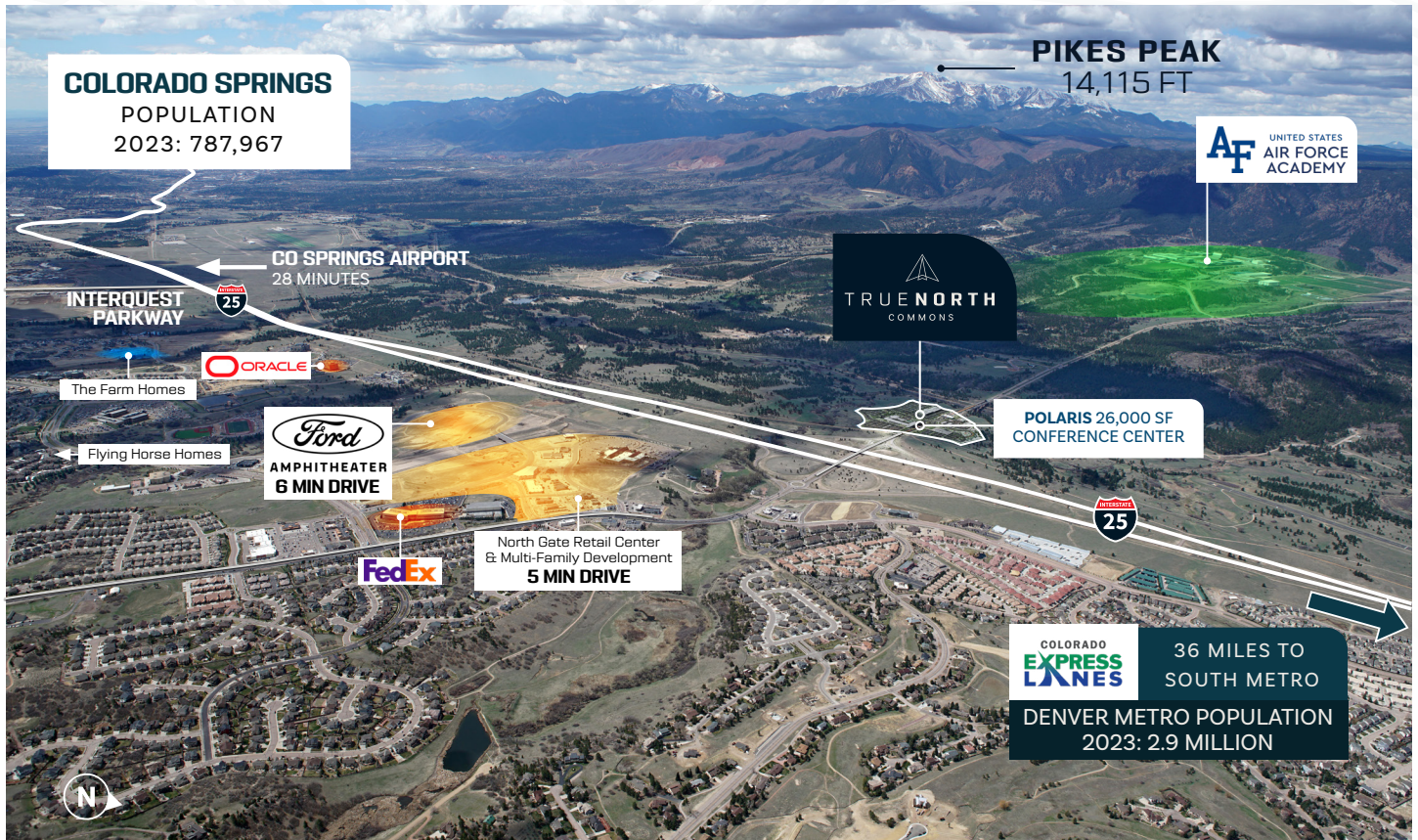
## \$451,895

MEDIUM HOME VALUE

## \$143,416

AVERAGE HOUSEHOLD INCOME

\*in a 3 mile radius from Interquest Pkwy & Voyager Pkwy



FOR MORE INFORMATION, PLEASE CONTACT:

**MICHAEL CRANE**

+1 303 260 6533

michael.crane@jll.com

**JULIE RHOADES**

+303 542 1520

julie.rhoades@jll.com

**ANDY ROSS**

+1 303 260 6504

andy.ross@jll.com

Visit for more information:  
[Truenorthcommonsoffice.com](https://Truenorthcommonsoffice.com)



Although information has been obtained from sources deemed reliable, neither Owner nor JLL makes any guarantees, warranties or representations, express or implied, as to the completeness or accuracy as to the information contained herein. Any projections, opinions, assumptions or estimates used are for example only. There may be differences between projected and actual results, and those differences may be material. The Property may be withdrawn without notice. Neither Owner nor JLL accepts any liability for any loss or damage suffered by any party resulting from reliance on this information. If the recipient of this information has signed a confidentiality agreement regarding this matter, this information is subject to the terms of that agreement. ©2024, Jones Lang LaSalle IP, Inc. All rights reserved