

AIRPORT LOGISTICS CENTER



Dalfen
INDUSTRIAL

235,740 SF AVAILABLE



Jones Lang LaSalle Brokerage, Inc

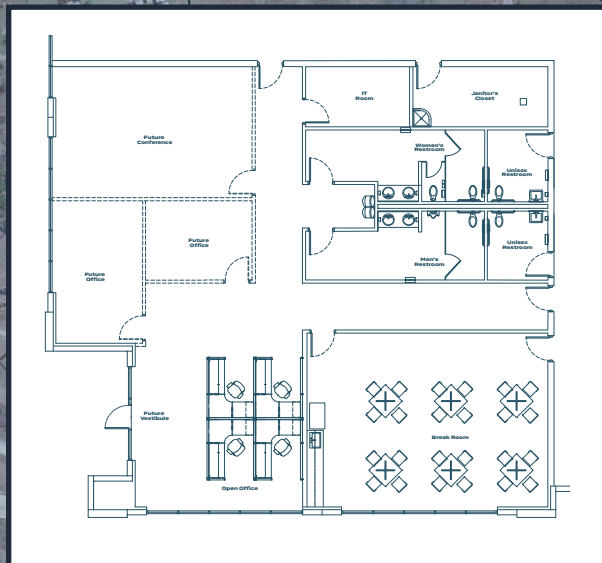
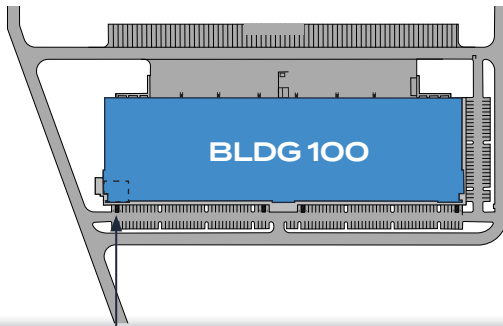
Ace Schlameus
+1 512 225 2709
ace.schlameus@jll.com

Kyle McCulloch
T +1 512 225 2713
kyle.mcculloch@jll.com

THE PROJECT

BUILDING 100

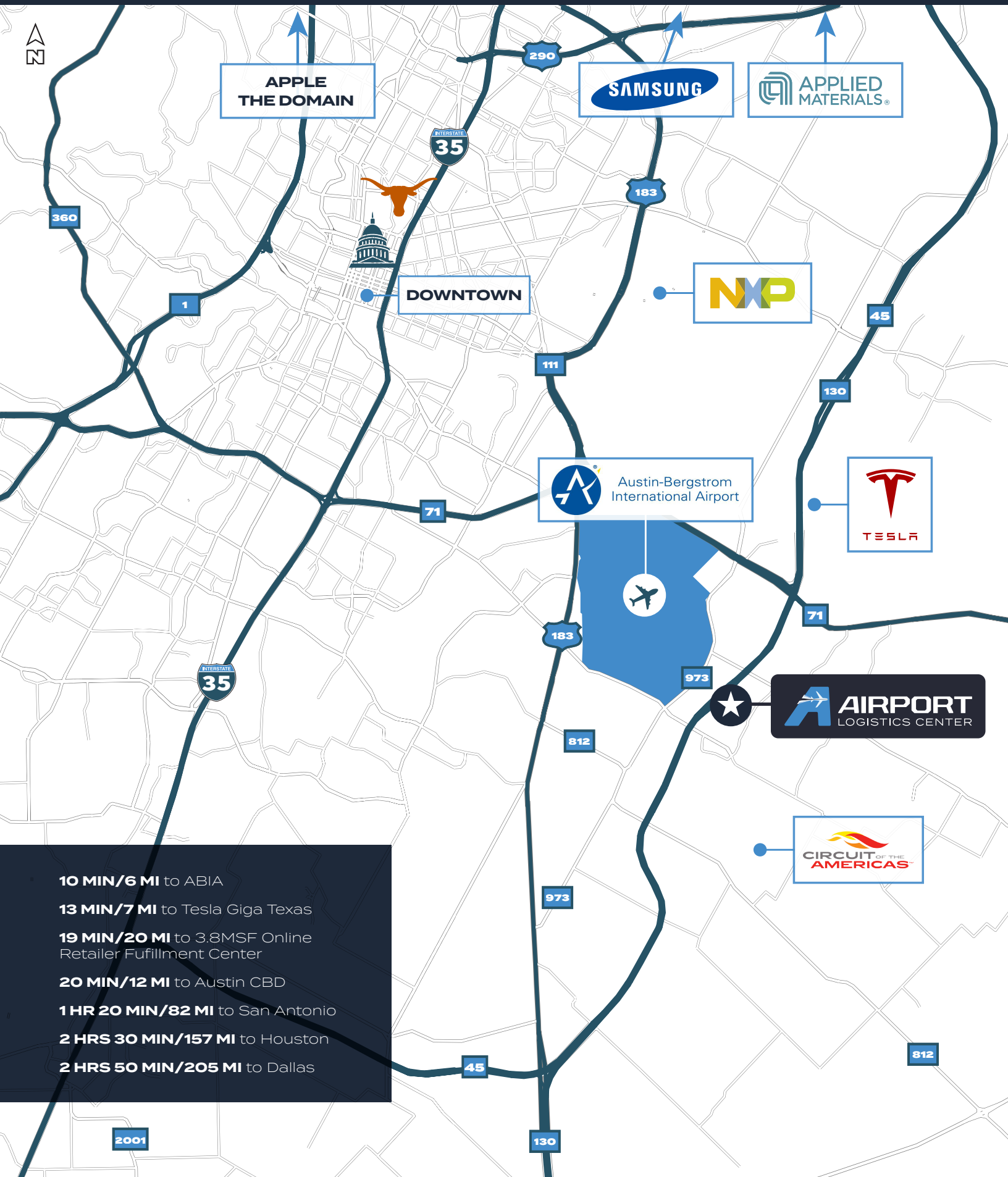
ADDRESS:	6106 Ross Road, Austin, TX 78617
SIZE:	235,740 SF
ROOF SYSTEM:	60-mil TPO
TRUCK COURT DEPTH:	185'
CLEAR HEIGHT:	36'
FIRE SUPPRESSION:	ESFR
SLAB:	6"
LOADING:	Rear load
DOCK HIGH DOORS:	36
RAMPS:	2
TRAILER PARKS:	73
TYPICAL COLUMN SPACING:	56' X 50'
POWER:	750 kVA @ 480/272 volts
PARKING:	219 spaces



130



LOCATION



10 MIN/6 MI to ABIA

13 MIN/7 MI to Tesla Giga Texas

19 MIN/20 MI to 3.8MSF Online
Retailer Fulfillment Center

20 MIN/12 MI to Austin CBD

1 HR 20 MIN/82 MI to San Antonio

2 HRS 30 MIN/157 MI to Houston

2 HRS 50 MIN/205 MI to Dallas



LEASING CONTACTS

Ace Schlameus
+1 512 225 2709
ace.schlameus@jll.com

Kyle McCulloch
T +1 512 225 2713
kyle.mcculloch@jll.com

Dalfen
INDUSTRIAL

JLL

Although information has been obtained from sources deemed reliable, JLL does not make any guarantees, warranties or representations, express or implied, as to the completeness or accuracy as to the information contained herein. Any projections, opinions, assumptions or estimates used are for example only. There may be differences between projected and actual results, and those differences may be material. JLL does not accept any liability for any loss or damage suffered by any party resulting from reliance on this information. If the recipient of this information has signed a confidentiality agreement with JLL regarding this matter, this information is subject to the terms of that agreement. ©2024. Jones Lang LaSalle IP, Inc. All rights reserved.