



For Lease

5,405 SF of Office Space Available

**1113 Airport Road | Administration Building
Wilmington Air Park, Wilmington, OH**



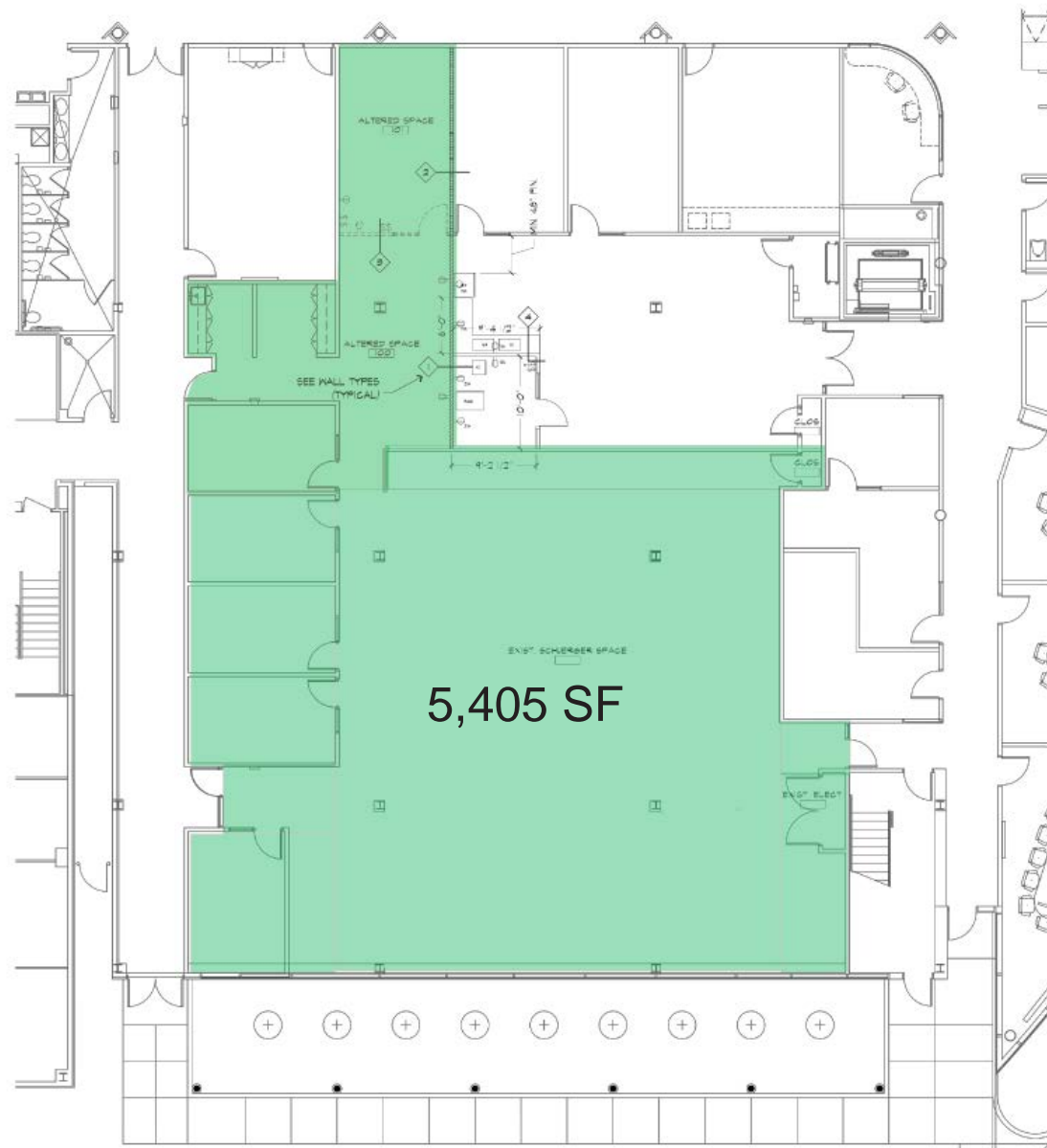


BUILDING HIGHLIGHTS

- 104,000 SF Total Office Building
- 5,405 SF Available
- Striking Lobby and Design
- On-Airport Facility
- 24-Hour Security
- Completed in 2006
- Shared Conference and Training Center
- Ample Free Parking
- Aggressive Economic Incentives Available
- Kitchenette and Furnishings Available

AVAILABILITY

FLOOR PLAN



Runway and Approach Data

Runway Length	Runway 04L-22R	Runway 04R-22L
Runway Length	10,700	9,000
Displaced Threshold	N/A	N/A
Effective Takeoff	10,700	9,000
Effective Landing	10,700	9,000
TORA	N/A	N/A
LOA	N/A	N/A
Stopway	N/A	N/A
Clearway	N/A	N/A
Runway Category	TRANSPORT	TRANSPORT
Runway Gradient	0.22%	0.30%
Pavement Type	CONCRETE	CONCRETE
Pavement Strength	100/175/200	100/175/200
Runway Gear	SWOWD/W	SWOWD/W
Lighting	HIRL/MIL	HIRL/MIL
Runway Marking	PRECISION	PRECISION
Navigational Aids	CAT II ILS NOB VOR	CAT II ILS VOR
Approach Lighting	RW-04L ALSF-I	RW-22L ALSF-I
Aircraft App. Cat.	D	D
Approach Slope	DC-10-30	DC-10-30
Runway End Coord.	83°47'11.01"	83°47'11.01"

Legend

Property Line	Color
Building Restriction Limit (BRL)	Blue
Object Free Area (OFA)	Red
Taxiway Object Free Area (TOFA)	Red
Runway Safety Area (RSA)	Red
Runway/Taxiway Pavement	Blue
Airport Beacon	Red
Lighted Wind Cone	Red
Township	Blue

Airport Data Table

County	Clinton
Township	Union
Town	Wilmington
Latitude	39°25'40.30"
Longitude	83°47'31.89"
Reference Point	107' MSL
Airport Elevation	107' MSL
Airport and Terminal	BEACON, PAPI, ALS
NavAids	BEACON, PAPI, ALS
Service Level	PRIVATE/PILOT USE
Airport Role	TRANSPORT
Approach Category	D
Approach Obstruction	0

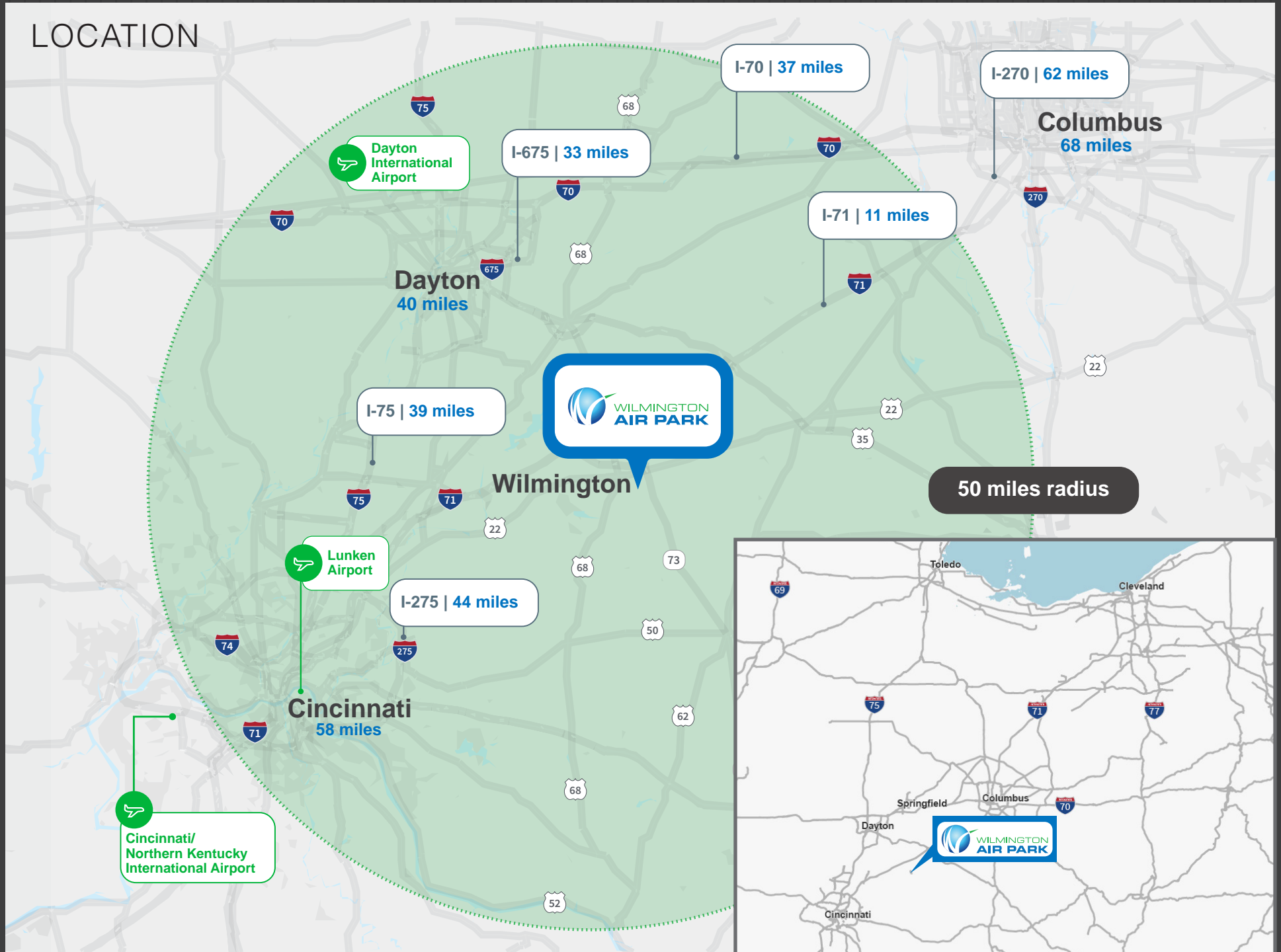
WILMINGTON AIR PARK & LOCAL USERS



WILMINGTON AIR PARK FEATURES

- Facilities, personnel and equipment ready to scale
- Turnkey solution for package-handling & load sorting
- Air-to-air, air-to-ground, ground-to-air
- Quick aircraft turnaround
- Ready for ad hoc flights or scheduled operations
- Daily, weekly or monthly
- 24/7 operations
- CAT III, all-weather airport

LOCATION



COMMUNITY BACKGROUND



Population

30 mins	45 mins
112,893	814,411

Median Household Income

30 mins	45 mins
\$62,564	\$80,772

Median Age

30 mins	45 mins
42	40.6

Professional Workers

30 mins	45 mins
53%	66%



Professional / graduate degree

30 mins	45 mins
22%	40%

Associate Degree

30 mins	45 mins
11%	10%

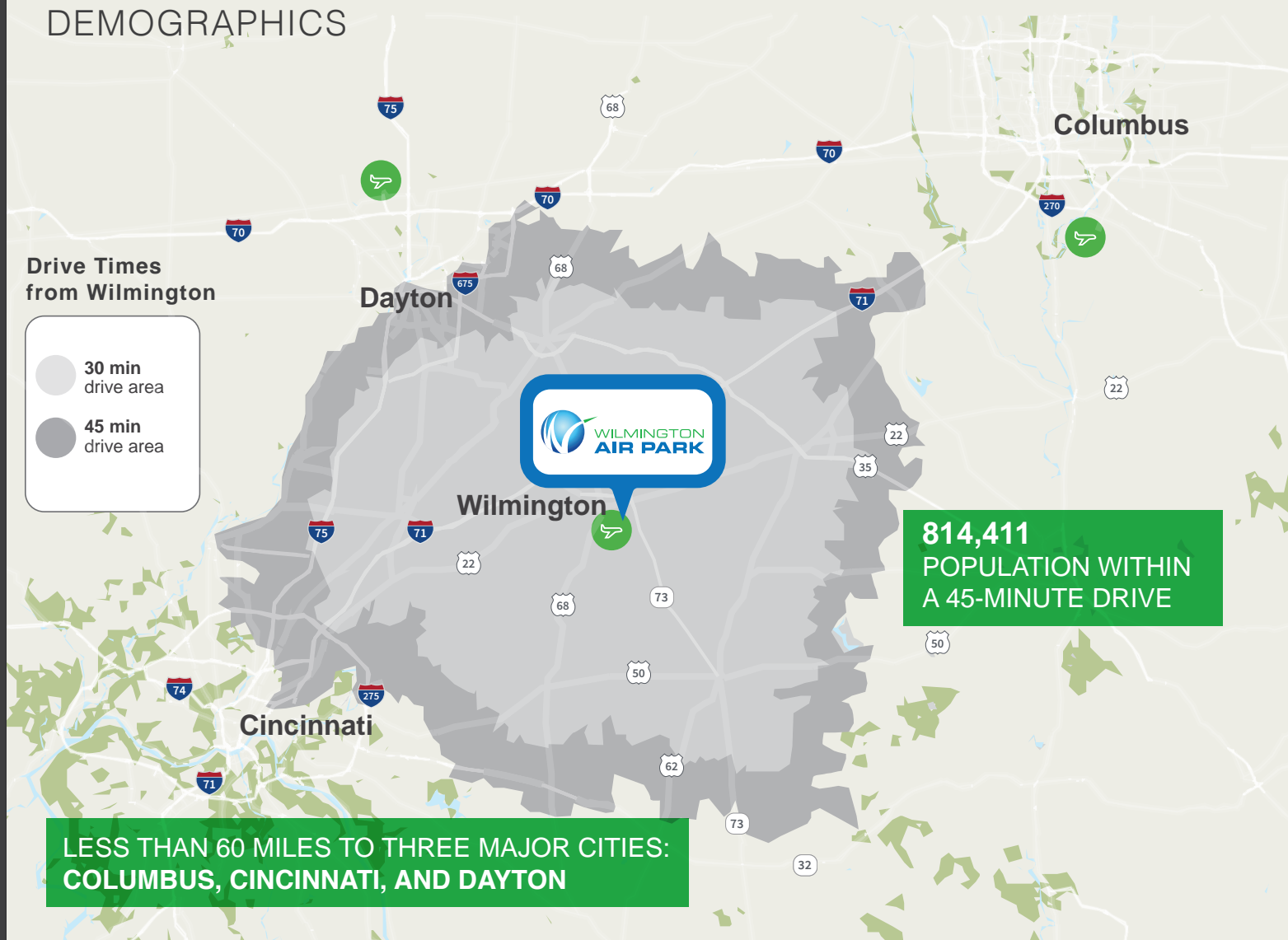
High School Education

30 mins	45 mins
34%	24%

No High School

30 mins	45 mins
9%	6%

DEMOGRAPHICS



WILMINGTON AREA WORKFORCE OCCUPATION

- 2.3% Management, business, science, and arts occupations
- 14% Retail and trade occupations
- 42.5% Service occupations
- 26.1% Production, transportation, and material moving occupations



WILMINGTON AIR PARK

DAVID D. LOTTERER
+1 513 252 2166
david.lotterer@jll.com

Although information has been obtained from sources deemed reliable, JLL does not make any guarantees, warranties or representations, express or implied, as to the completeness or accuracy as to the information contained herein. Any projections, opinions, assumptions or estimates used are for example only. There may be differences between projected and actual results, and those differences may be material. JLL does not accept any liability for any loss or damage suffered by any party resulting from reliance on this information. If the recipient of this information has signed a confidentiality agreement with JLL regarding this matter, this information is subject to the terms of that agreement. ©2023. Jones Lang LaSalle IP, Inc. All rights reserved.

