

# 575 Lexington Avenue

## Midtown East Retail Sublease Opportunity



### Location

Northeast corner  
of East 51st Street

### Size

Ground Floor: 10,598 sf  
Lower Level: 3,476 sf  
(non-selling)  
Mezzanine: 364 sf  
(non-selling)  
Total: 14,438 sf

### Frontage

Approx. 120' wraparound

### Site Status

Currently Duane Reade  
store #14488

### Sublease Term

1/31/2027

### Rent

Available upon request

### Neighboring Co-Tenants

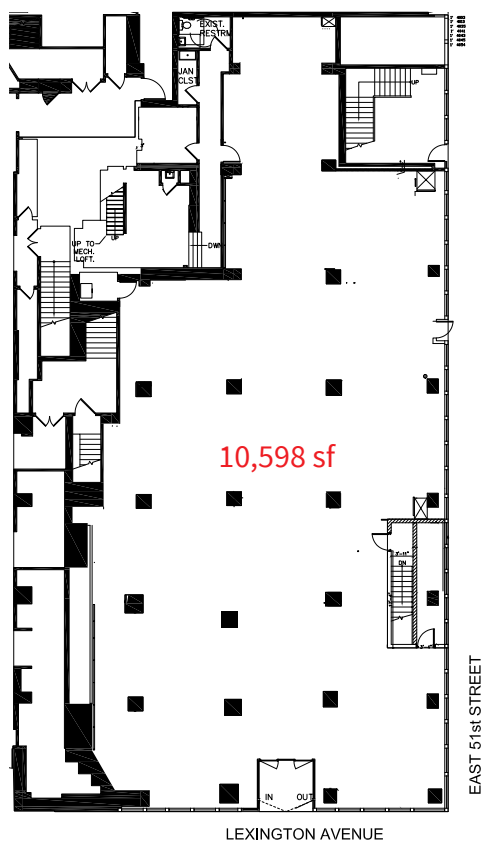
- Urban Space
- Paris Baguette
- Devoción
- CVS
- Starbucks
- Sugarfish

### Features

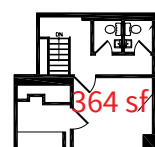
- Corner retail opportunity located at the base of a premier 35-story, 745,487 SF Class-A office building
- Adjacent to the E, M, and 6 subway station entrance, located at Lexington and 51st Street
- Surrounded by high-density commercial and hotel properties
- Close proximity to Grand Central Terminal



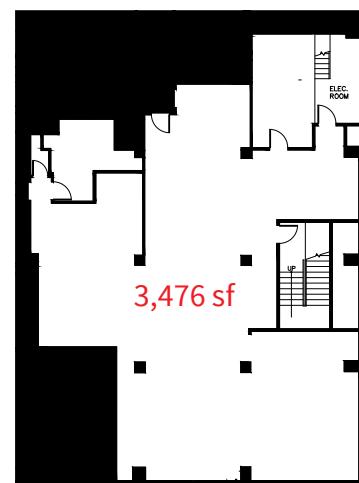
Ground Floor



Mezzanine



Lower Level



Floor plans not to scale