

460 Eighth Avenue

**Penn Station
Moynihan Train Hall**
Freestanding Retail



DUANE READE SUBLEASE OPPORTUNITY

LOCATION

East side of Eighth Avenue
Between W. 34th and W. 33rd Streets

SIZE

Ground Floor: 6,200 sf
Lower Level: 7,400 sf

WRAPAROUND FRONTAGE

Eighth Avenue: 130 ft
West 33rd Street: 50 ft
West 34th Street: 50 ft

SUBLEASE TERM ASKING RENT

Through 5/31/2030 Upon request

- Located directly across the street from **Moynihan Train Hall** and adjacent to **Madison Square Garden** and **Penn Station-LIRR** entrance and 34th Street-Penn Station **1 2 3 A C E** subway station
- Rare store opportunity in the heart of Vornado Realty Trust's redevelopment of the **Penn District**
- **Penn Station**, the busiest transportation hub in North America, sees **650,000 visitors per day**
- Steps from Macy's, Herald Square, Manhattan West and Hudson Yards

MICHAEL RILEY
+1 212 812 5901
michael.riley@jll.com

ISABELLA BURNETTE
+1 212 376 1874
isabella.burnette@jll.com

PATRICK A. SMITH
+1 212 812 5888
patricka.smith@jll.com



460 Eighth Avenue



181,538

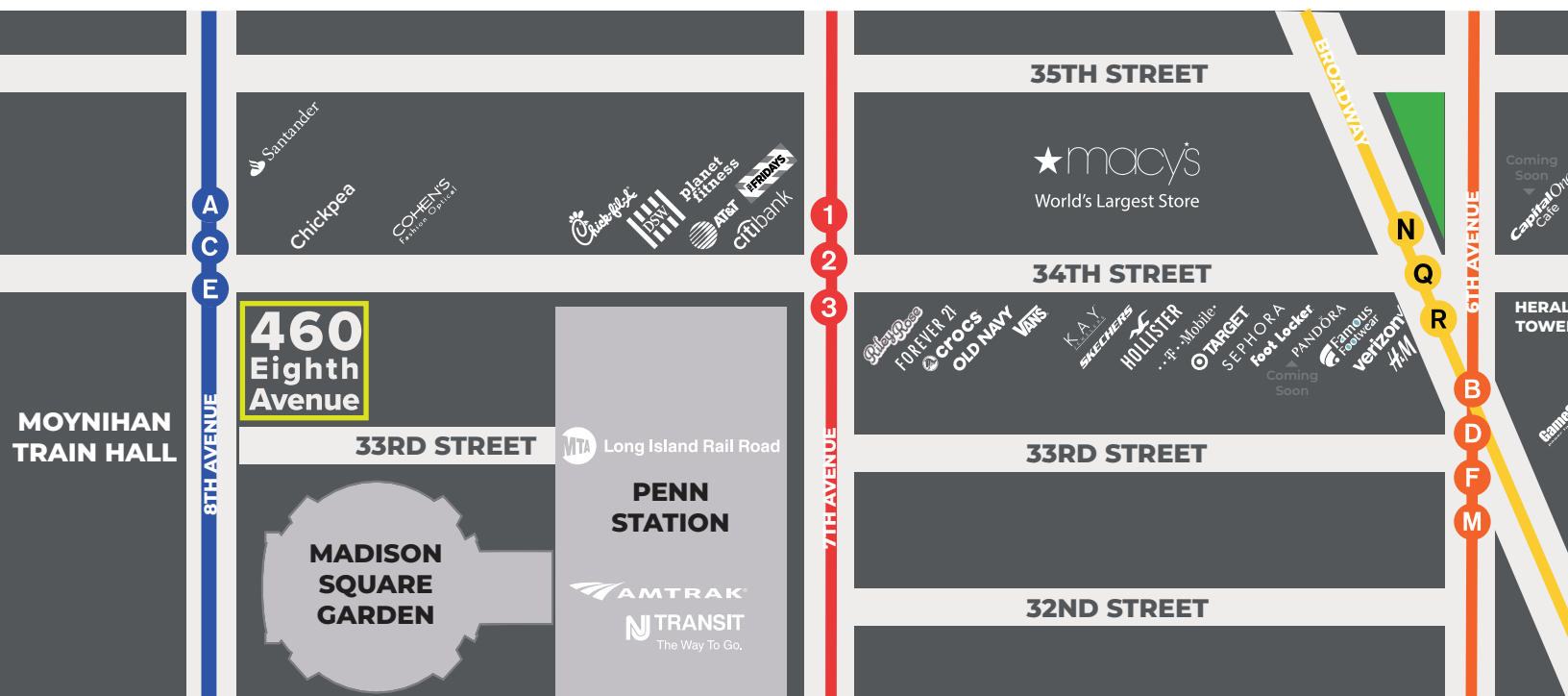
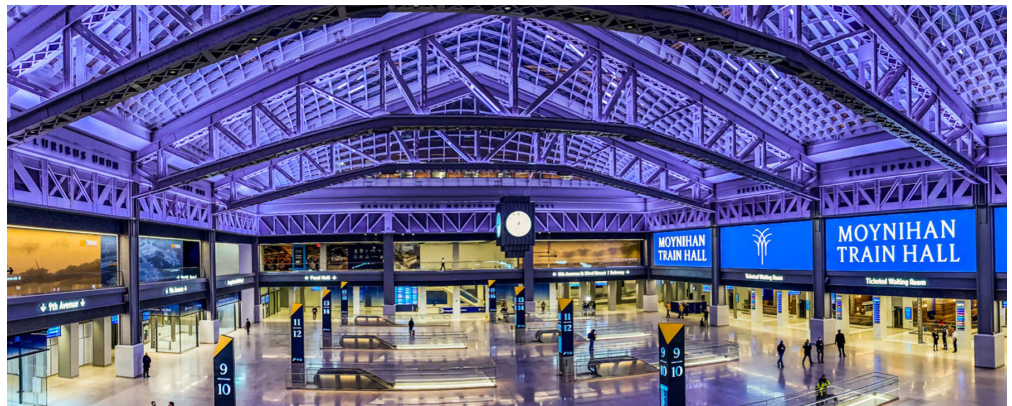
Population
1 Mile Radius

600K

Penn Station
Daily Visitors

26M

Penn Station Subway
Passengers

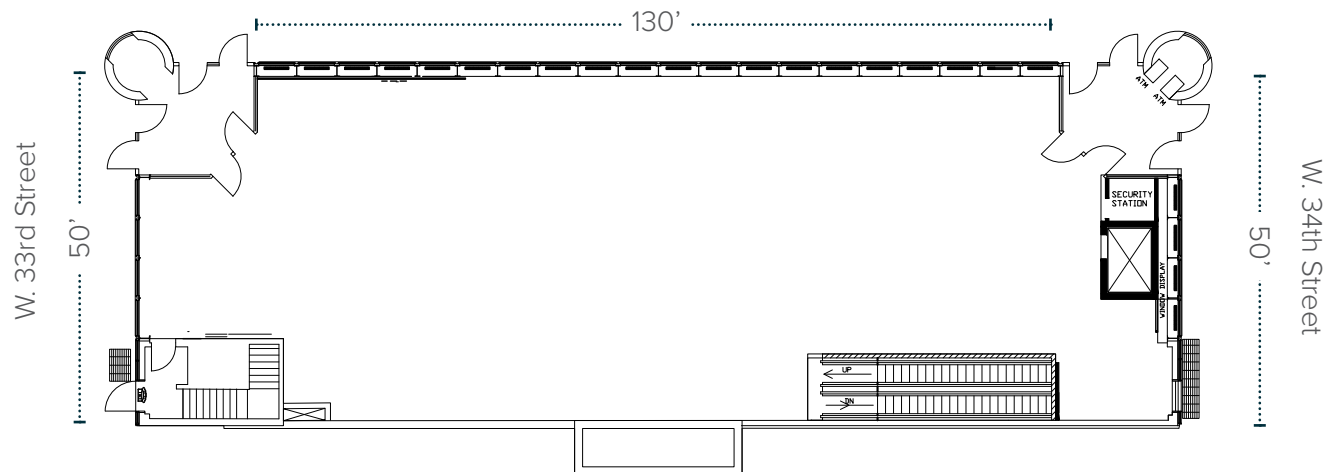


460 Eighth Avenue

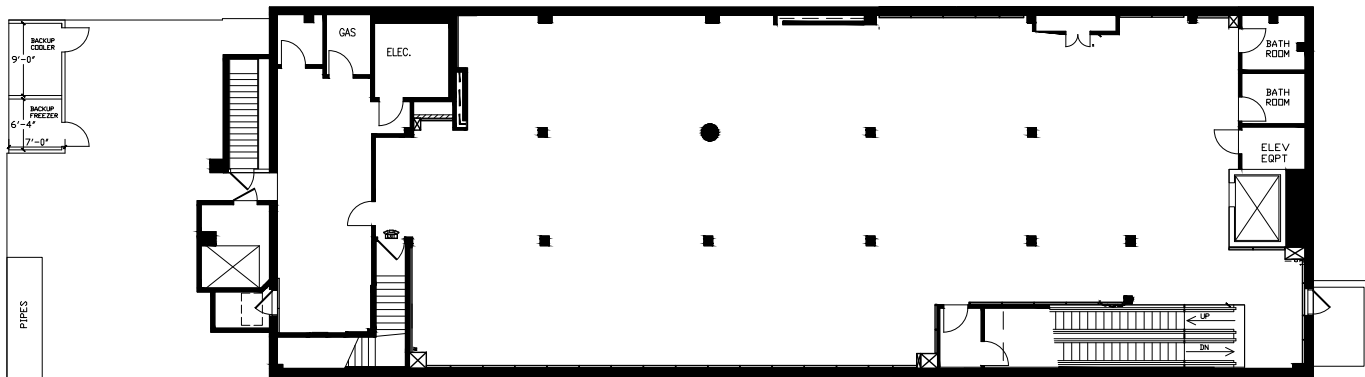


Ground Floor 6,200 sf

Eighth Avenue



Lower Level 7,400 sf



Jones Lang LaSalle Brokerage, Inc. | 330 Madison Avenue New York, NY 10017
DISCLAIMER

Although information has been obtained from sources deemed reliable, neither Owner nor JLL makes any guarantees, warranties or representations, express or implied, as to the completeness or accuracy as to the information contained herein. Any projections, opinions, assumptions or estimates used are for example only. There may be differences between projected and actual results, and those differences may be material. The Property may be withdrawn without notice. Neither Owner nor JLL accepts any liability for any loss or damage suffered by any party resulting from reliance on this information. If the recipient of this information has signed a confidentiality agreement regarding this matter, this information is subject to the terms of that agreement. ©2024 Jones Lang LaSalle IP, Inc. All rights reserved.

