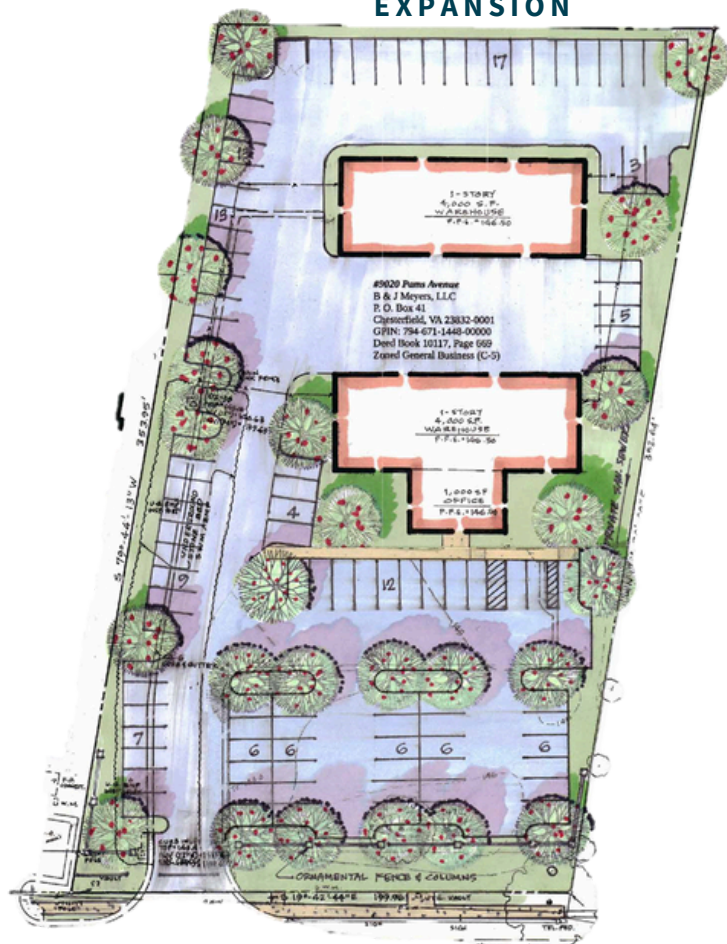




# For lease

9,200 s.f. flex space available

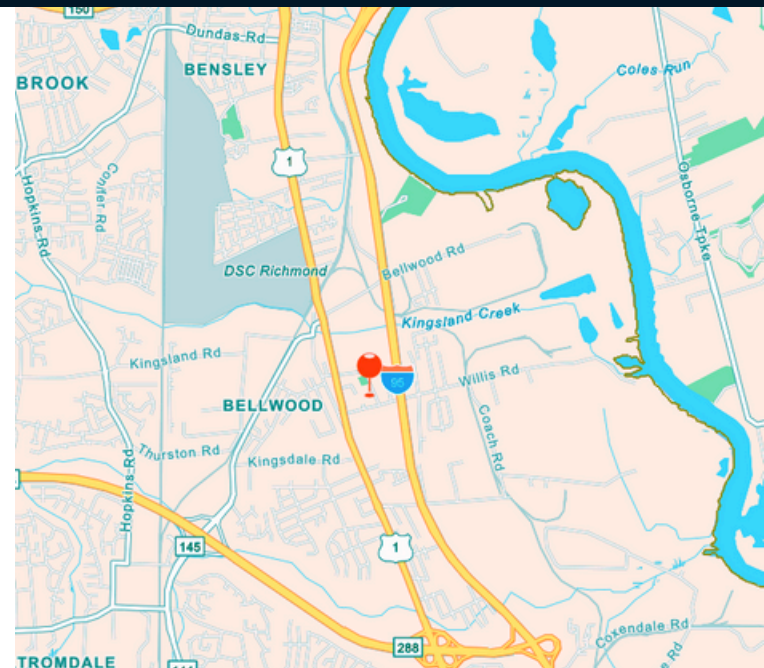
## PROPOSED PARKING EXPANSION



## 9020 Pams Avenue Richmond, VA

### Property Specifications

- 9,200 SF available
- 8,000 SF of warehouse
- 1,000 SF of office
- Immediate proximity to I-95
- 20' clear height
- 8 drive-in door(s)
- Located in the Opportunity Zone of Chesterfield County



Spotty Robins  
Vice President  
spotty.robins@jll.com  
+1 (804) 200-6533

jll.com