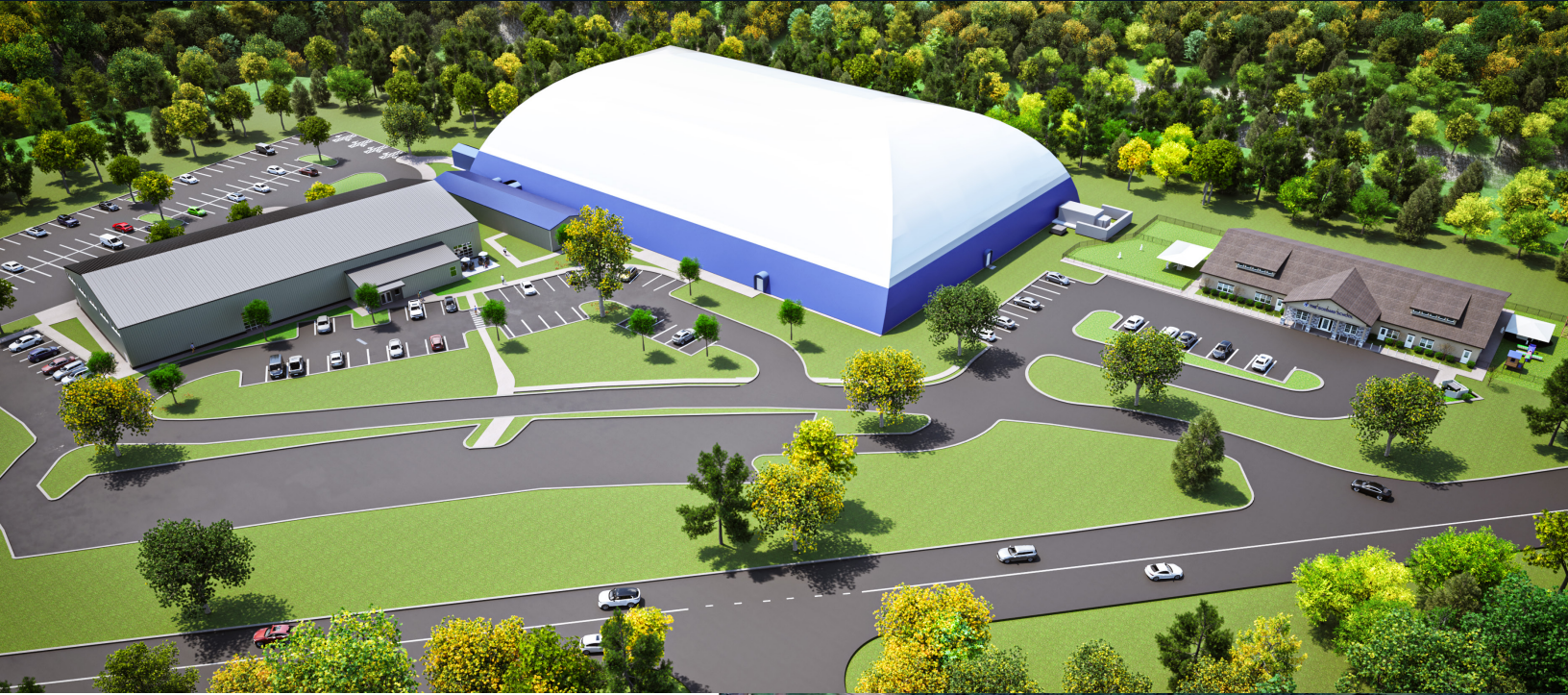


# For Lease



## New Retail/Recreational Space at North Park Sports Complex

2318 Wildwood Road, Gibsonia, PA 15044



### Highlights

- 20,000 SF available for lease
- 20' ceiling height
- Abundant parking field
- Great access
- Building/Monument signage available
- Good co-tenancy Goddard School and Century Soccer
- Great demographics



**Michelle Stewart**

Senior Vice President

[michelle.stewart@jll.com](mailto:michelle.stewart@jll.com)

+1 412 849 5726

[jll.com](http://jll.com)



Jones Lang LaSalle Americas, Inc.

## New Construction - Coming Fall 2024



Demographics	3-miles	5-miles	7-miles
Population	38,056	106,304	195,420
Daytime Population	31,412	126,052	197,614
Households	15,465	43,398	79,797
Average Household Income	\$152,613	\$147,251	\$150,246

### DISCLAIMER

Although information has been obtained from sources deemed reliable, Owner, Jones Lang LaSalle, and/or their representatives, brokers or agents make no guarantees as to the accuracy of the information contained herein, and offer the Property without express or implied warranties of any kind. The Property may be withdrawn without notice. If the recipient of this information has signed a confidentiality agreement regarding this matter, this information is subject to the terms of that agreement. ©2024. Jones Lang LaSalle. All rights reserved.

### Trade area

