

Tyler Street Stacks

950 13th Ave NE, Minneapolis, MN 55413



Zac Hoang

zac.hoang@jll.com

612 217 5156

Jeremy Grittner

jeremy.grittner@jll.com

612 217 6722

Jack Whitcomb

jack.whitcomb@jll.com

612 217 5122



Property highlights

- Located at the main intersection of NE Minneapolis, the Arts District of Minneapolis
- 129 units of multi-family with 4,700 SF of ground floor retail
- Surrounded by trails, breweries, coffee shops, and a dense residential population
- Easy access from I-94 and I-35W
- Nearby tenants include Spyhouse Coffee, Corepower Yoga, and Bauhaus Brewery

Site information

Location: 950 13th Ave NE, Minneapolis, MN 55413

Description: 118,000 SF Mixed-Use Property

Traffic counts

Ne Central Ave: 14,170 vpd

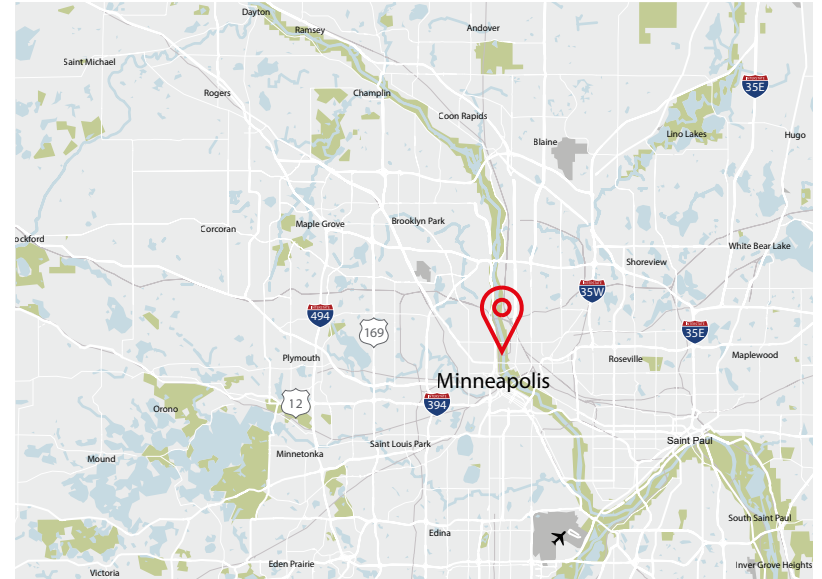
NE Broadway St: 21,375 vpd

Demographics

Radius	1 Mile	3 Miles	5 Miles
Population	22,475	197,359	478,888
Median HH Income	\$67,299	\$55,863	\$63,046
Average HH Income	\$87,596	\$79,986	\$84,817

Availability

4,700 SF for lease (can demise)



Nearby Tenants



corepower **YOGA**



SPYHOUSE
COFFEE ROASTERS

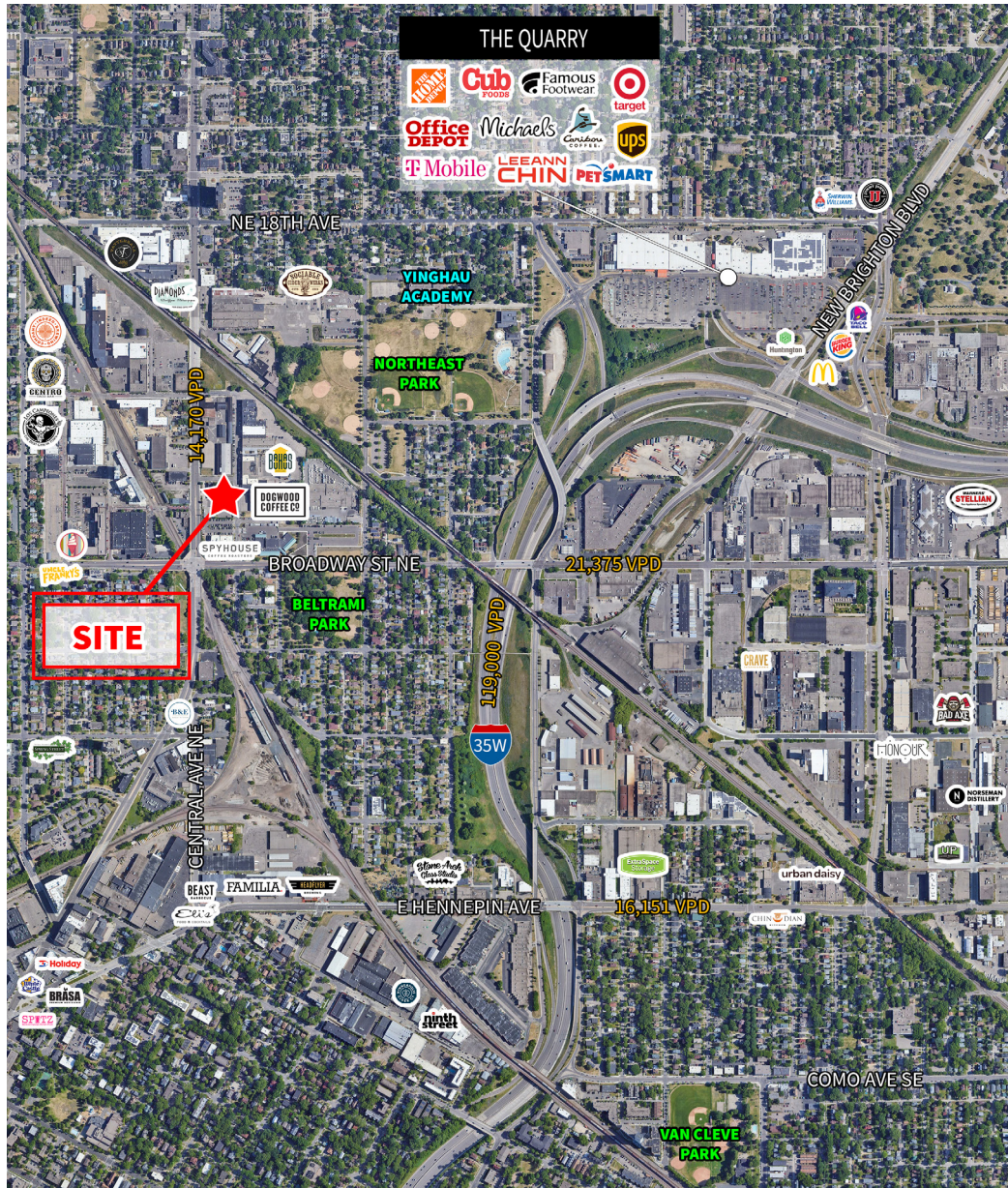


DOGWOOD
COFFEE CO

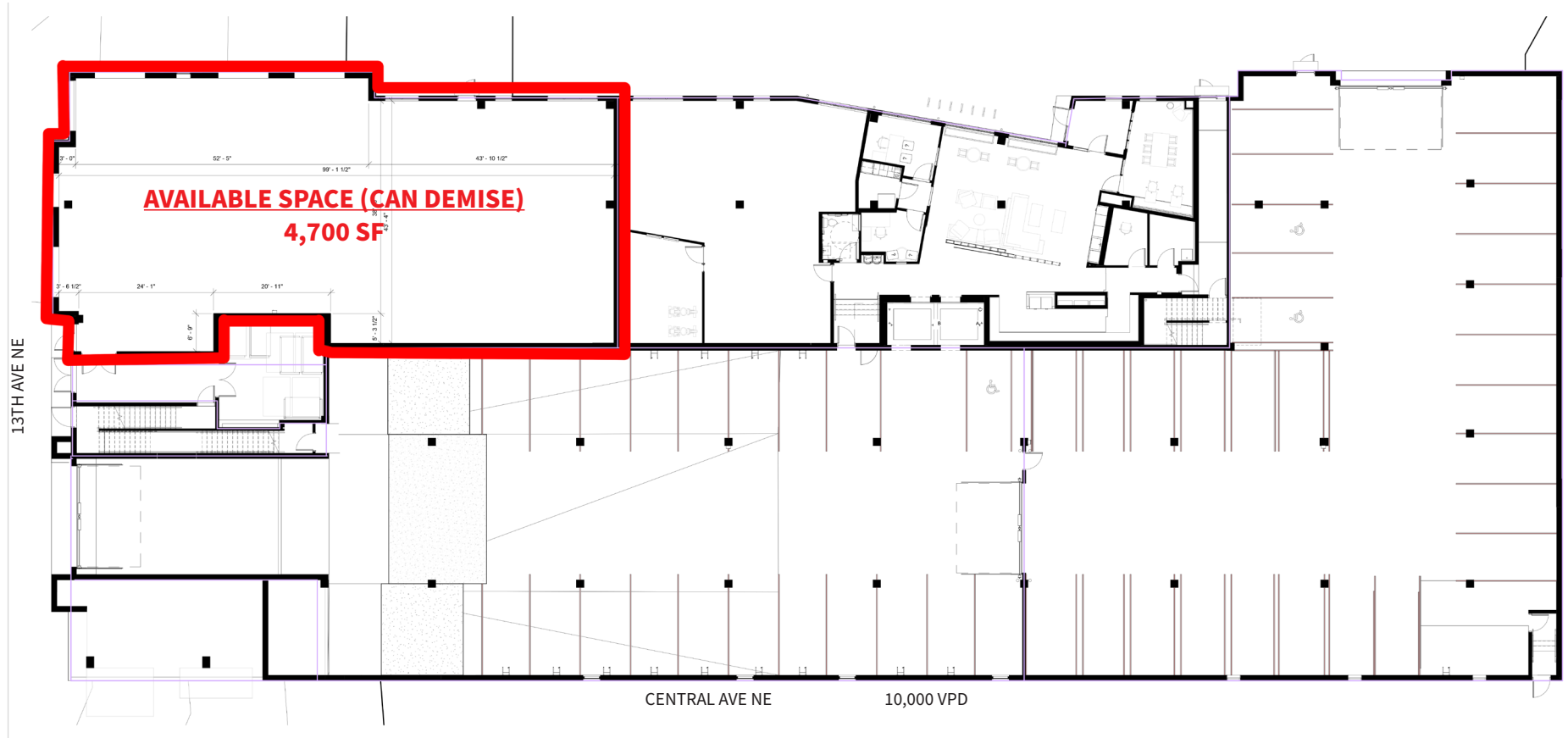


DIAMONDS
Coffee Shoppe
YOUR ATOMIC COFFEE STOP

Aerial and plans



Space plan



CONTACT US >>

Zac Hoang
zac.hoang@jll.com
612 217 5156

Jeremy Grittner
jeremy.grittner@jll.com
612 217 6722

Jack Whitcomb
jack.whitcomb@jll.com
612 217 5122