



370 Interlocken Blvd.

Broomfield, CO 80021

370 Interlocken Blvd.

Broomfield, CO 80021



PROPERTY TYPE

Office



BUILDING CLASS

A



BUILDING SIZE

150,266 SF



LEASE RATE

Negotiable

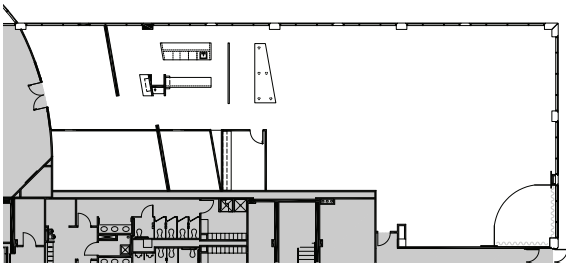


**YEAR BUILT/
RENOVATED**

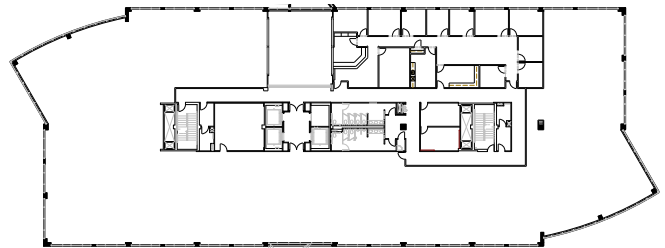
1998/ 2019

AVAILABLE SPACES

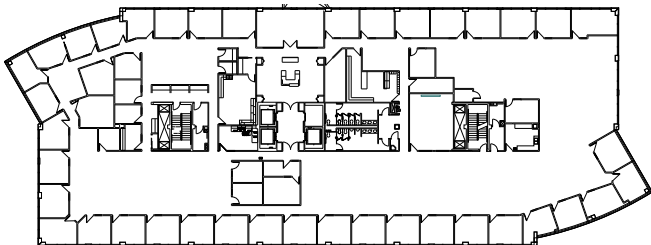
Suite 100 - 6,292 RSF



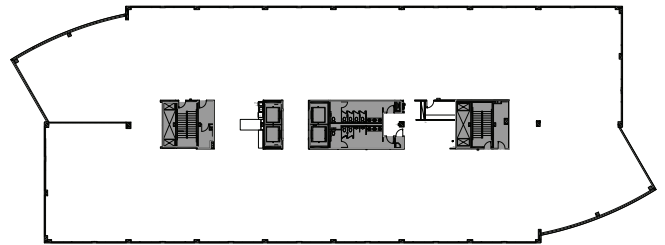
Suite 200 - 20,901 RSF



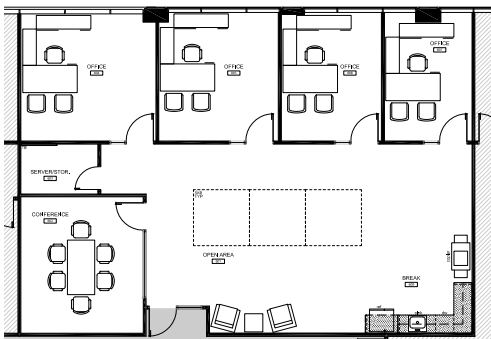
Suite 300 - 26,076 RSF



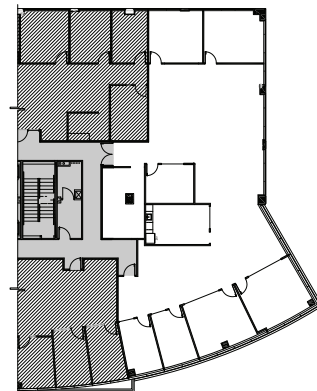
Suite 400 - 26,603 RSF

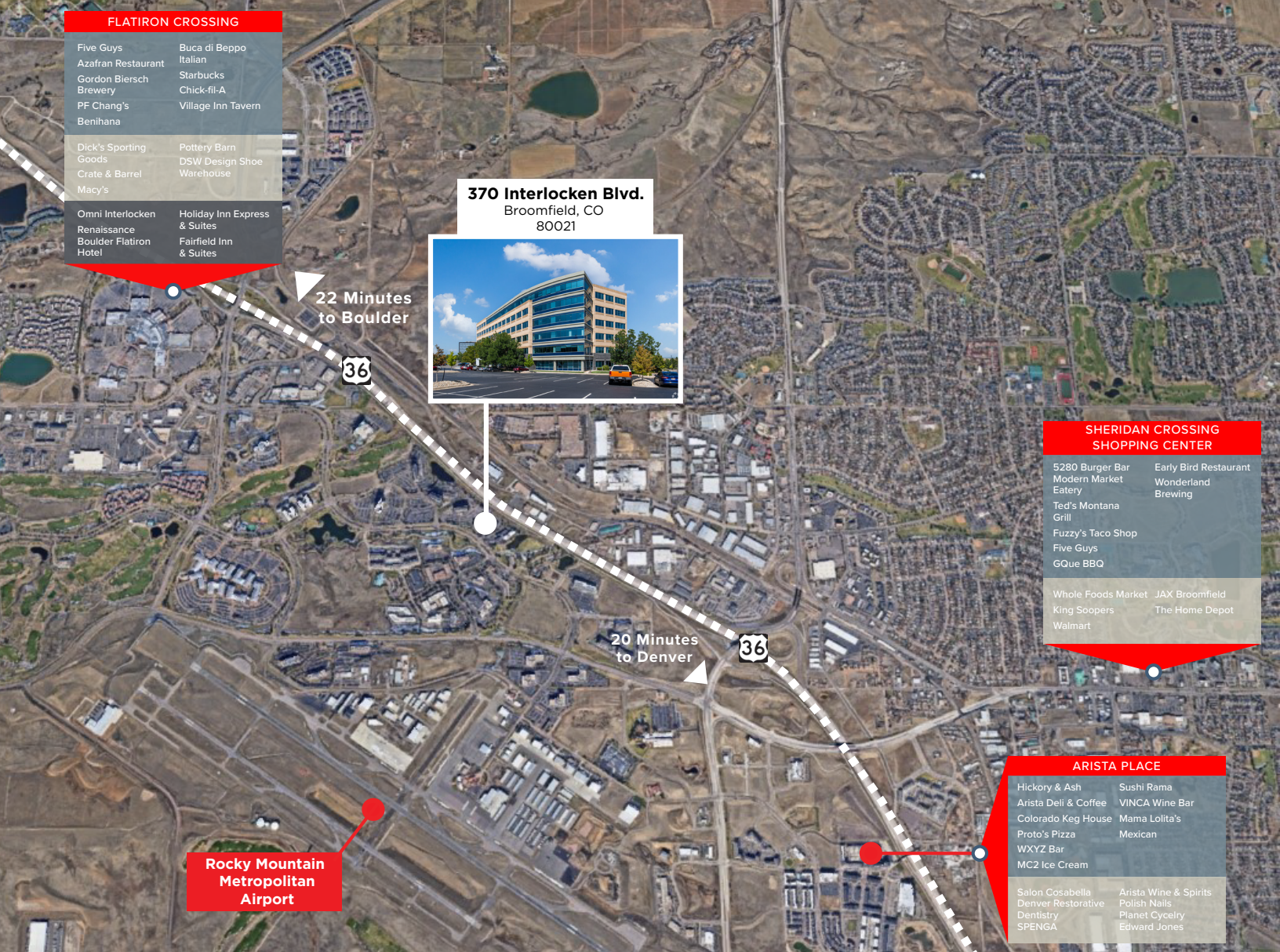


Suite 640 - 2,203 RSF



Suite 650 - 4,689 RSF





Area Amenities

- Close proximity to the Omni Interlocken Hotel and Golf Course
- Corporate neighbors include Oracle, Level 3 Communications, Staples, Vail Resorts, and Webroot
- Over 3 million square feet of retail in the immediate vicinity including the Flatiron Crossing Mall, hotels, retail services, fast food and fine dining
- Over 12 miles of existing and proposed adjacent trail system that connects to the Boulder County regional trail system





Don Misner

Senior Vice President
+1 303 217 7957
don.misner@jll.com

Joe Heath

Senior Vice President
+1 303 217 7959
joe.heath@jll.com

Jonathan Shirazi

Associate
+1 303 217 7968
jonathan.shirazi@jll.com

