



129  
FIFTH

Premier Flatiron  
Retail Opportunity







1 2 9  
FIFTH

Available for direct lease for the first time in 10 years, 129 Fifth Avenue is ideally positioned **between E. 19th and E. 20th Streets** - one of Flatiron District's most premier blocks.

With **45' of building frontage** and double-height store facade, featuring illuminated signage, the retail at 129 Fifth Avenue offers exceptional branding opportunities.

Formerly occupied by Express Edit, Tory Sport, Tory Burch and A/X, 129 Fifth Avenue is a marquee space with high visibility on Flatiron's preeminent retail corridor.

Renowned for its architectural beauty, and thriving residential, office, and tourist populations, the Flatiron District consistently shines as the ultimate destination for global retail brands.



## Retail Neighbors:

Alo | Arc'teryx | Aritzia | Bandier | Bonobos | Camp | Club Monaco | Hoka | J.Crew | Lululemon  
Madewell | New Balance | On Running | Parachute Home | Psycho Bunny | Rhone | Sephora | Zara

# Branding opportunity in the heart of Flatiron, New York



**1 2 9**  
**FIFTH**

## Key Features:

- Centrally located Fifth Avenue retail corridor space in the **premier block** between 19th and 20th Streets
- Surrounded by **world-class** retailers, restaurants, hotels and corporate office headquarters
- High ceilings** of up to 19' on ground floor with legal selling lower level

## The Neighborhood

- Centrally situated between Madison Square and Union Square Parks, with over **425,000 daily visitors** combined\*
- A true mixed-use neighborhood with **28 million SF of office space** in the immediate area and **73,000 residents** within a 1/2-mile radius. Its 2:1 employee to resident ratio contributes to the location's **24/7 vibrancy**

\*Source: Union Square Partnership, NYC Tourism + Conventions

**235,577**

Daytime Population

**\$158K**

Median HH Income

**60,000**

Students Attending  
Area Universities

**72,655**

Area Residents

**37**

Median Age

**85%**

Bachelors/Graduate  
Degree

Source: 2024 Esri Demographics, 1/2 mile radius

## Space Details:

### >>> Location:

Fifth Avenue, between  
E. 19th & E. 20th Streets

### >>> Size:

Ground Floor: 4,047 sf  
Lower Level: 4,940 sf

### >>> Frontage:

45' on Fifth Avenue

### >>> Ceiling Heights:

Ground Floor: 15-19'  
Lower Level: 10-12'

### >>> Possession:

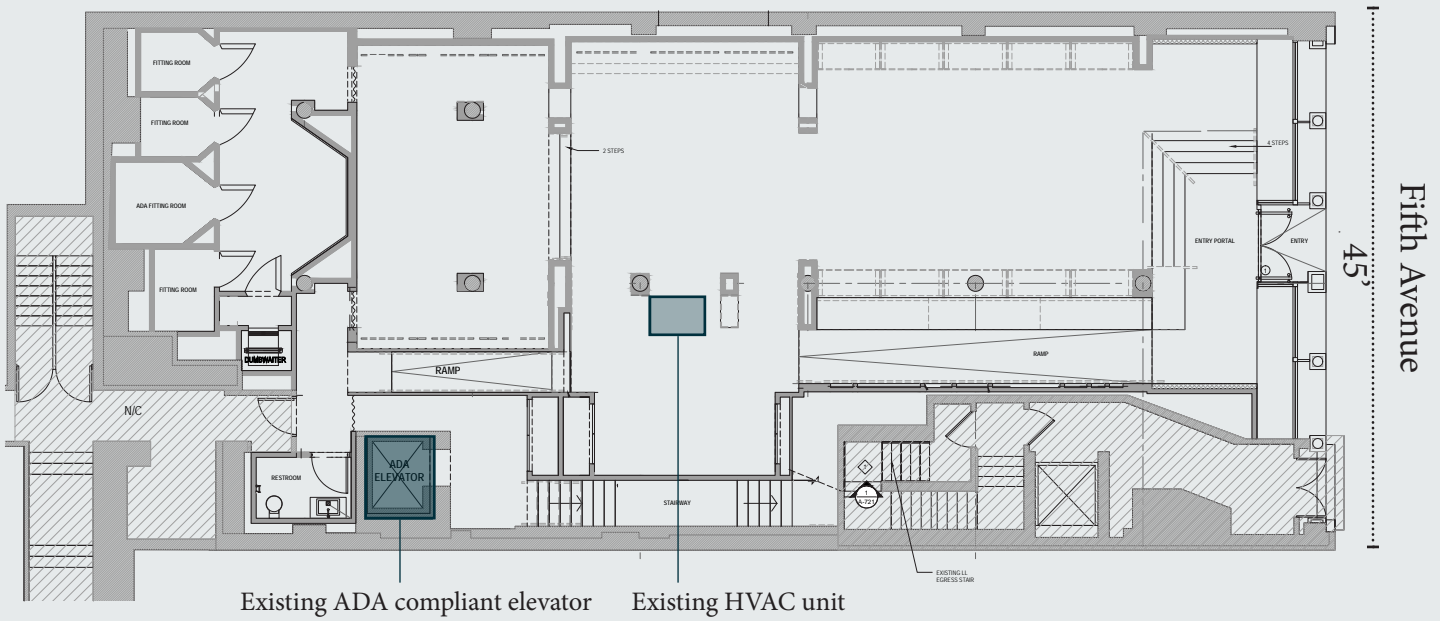
Immediate

### >>> Comments:

Existing ADA-compliant  
elevator and dedicated  
HVAC in place

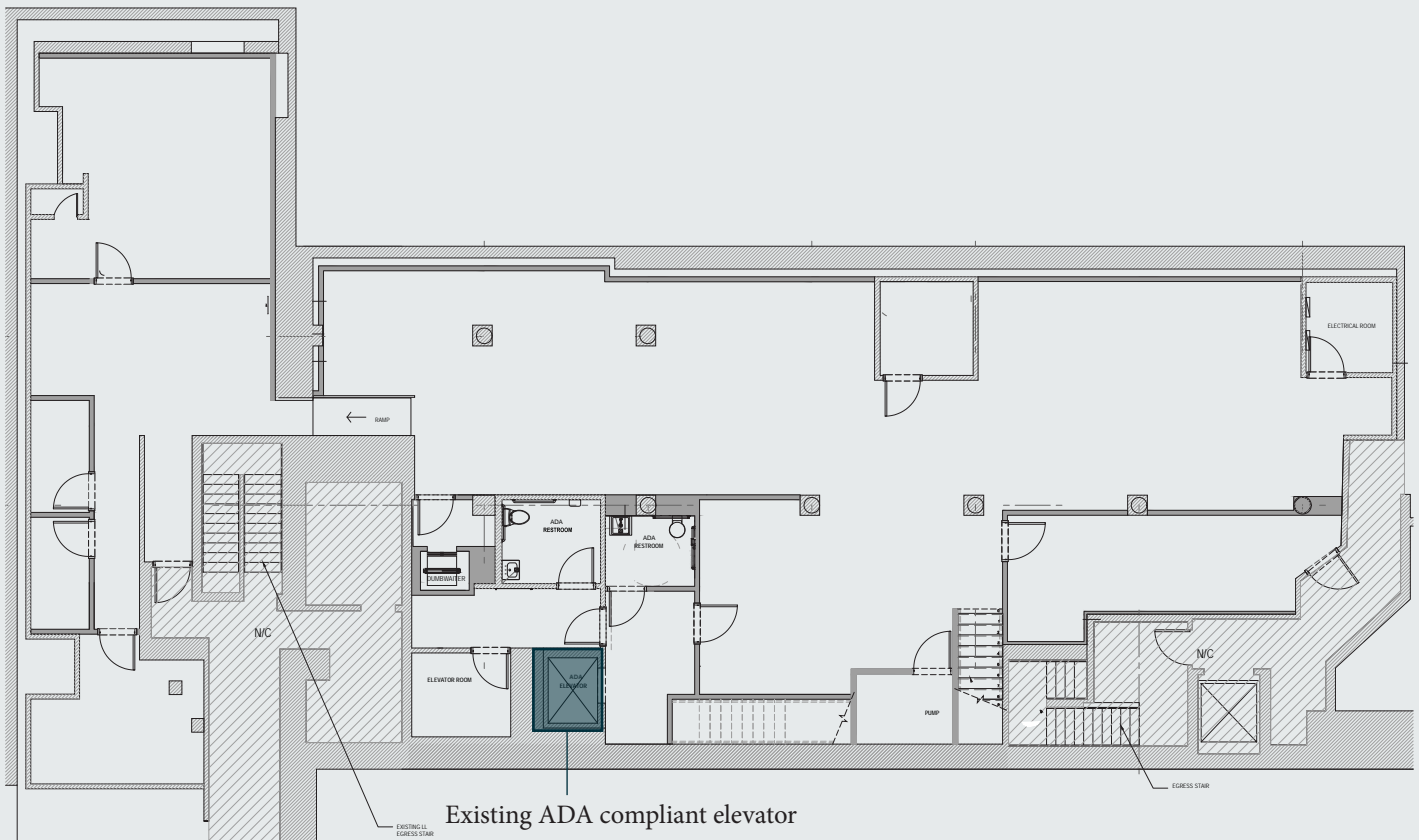
# Ground Floor

4,047 SF | 15-19' ceiling height



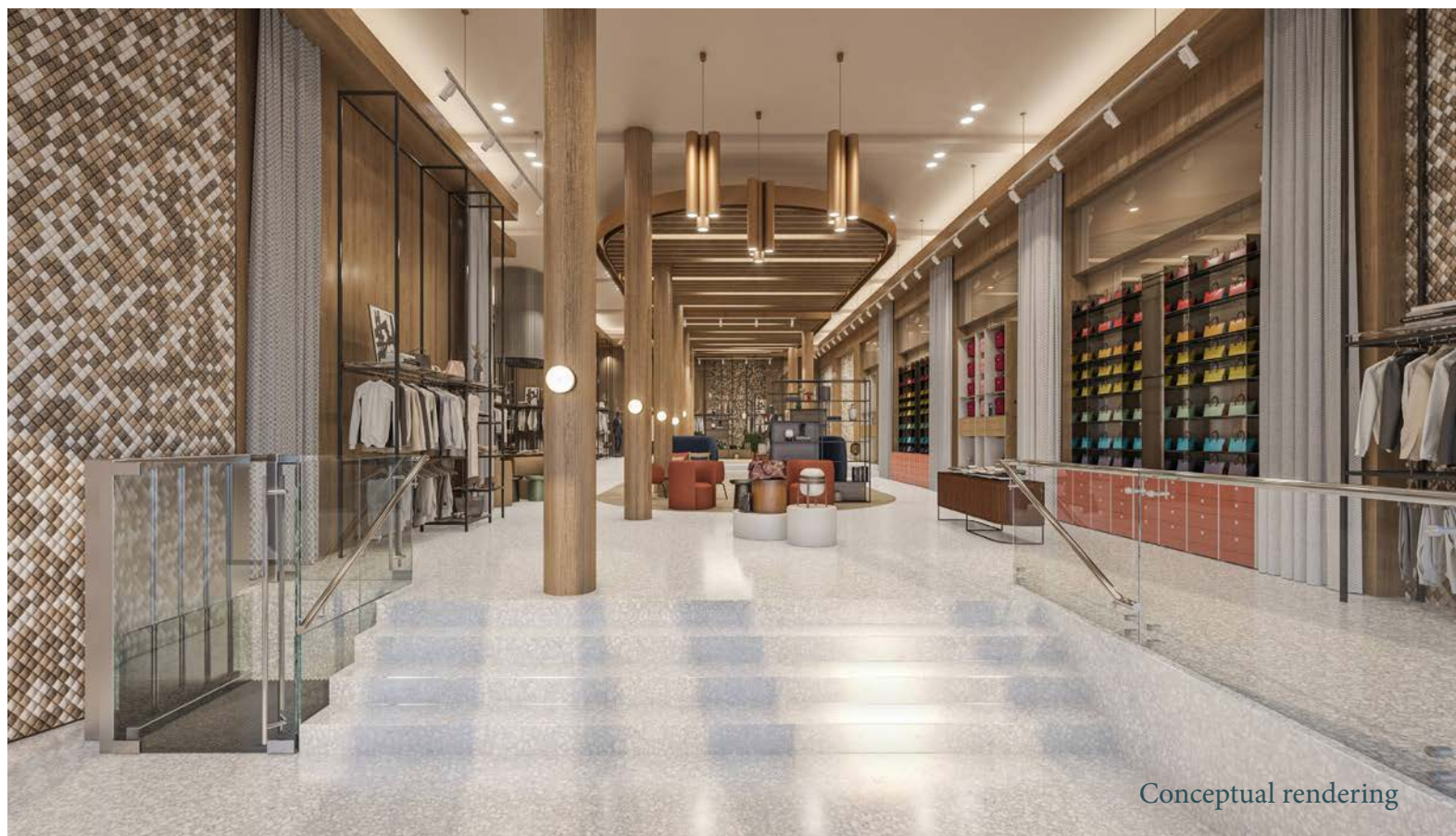
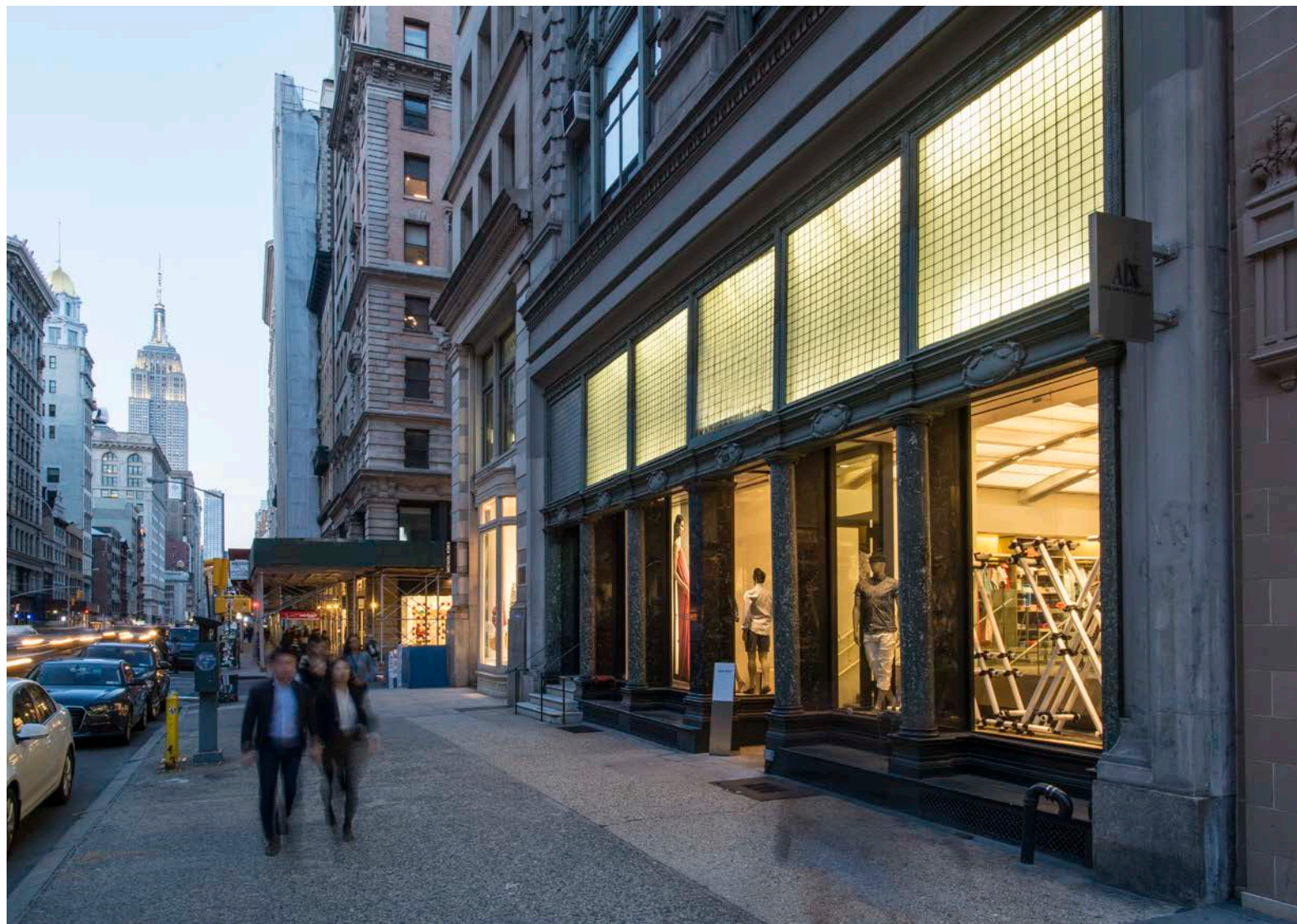
# Selling Lower Level

4,940 SF | 10-12' ceiling height



Note: Floor plans not to scale





Conceptual rendering



EAT ALY  
alti cibi

MADISON  
SQUARE PARK

# The Neighborhood

R

W

EAST 23RD STREET



BANK OF AMERICA

TD FedEx DIG INN  
MADE MAN BARBERSHOP  
LENSCRAFTERS

States Liberty

HCKA

Juice Press

Cote Kohler

BUCK MASON  
Fabletics

EILEEN FISHER  
alo  
ac

EAST 22ND STREET

Harry Potter  
Villa & House



Eklund Gomes  
@ Douglas Elliman

Obicá

American Standard

Lovesac

Flowers by  
Blooming Affairs

V Valley National Bank

Cha Cha

ARCTERYX

EAST 21ST STREET

charles SCHWAB

Massara

ANN TAYLOR

jacadi

Abercrombie & Fitch

Madura

Aqua Restaurant

Theory

DESIGN WITHIN  
REACH

AVOCADO

Waterworks

EAST 20TH STREET

RHONE

Lalique

TIMOTHY OULTON

GRAMERCY  
TAVERN

129

Rodd & Gunn

EQUINOX

Mezeh Mediterranean Grill

TUMI

FALCONERI

SEPHORA

FISHS EDDY

AMC Theatres

EAST 19TH STREET

Cutzia

Crate&Barrel

abc carpet & home

OLE & STEEN

H&M

ROSAMEXICANO

Tarallucci  
E Vino

Bari Bodega

MATRESS  
FIRM

EAST 18TH STREET

BANANA REPUBLIC sweetgreen

PEDAL HOUSE



fresh

bluemercury

claire's

Dr. Martens

Scotch + Soda

UNTUCKit

ZARA

intimissimi

Italian lingerie

Venchi

verizon

\* PRET A MANGER \*

BARNES & NOBLE

EAST 17TH STREET

lululemon



McDonalds

J.CREW

Hype Gym



EAST 16TH STREET

Free People

CHASE

Glowbar

JOE

Paper Source

NEW YORK  
UNIVERSITY  
DORMATORY

WARBY PARKER

EAST 15TH STREET

TD Bank

City  
National  
Bank

Citizens

Lids

4 5 6 L  
N Q R W

UNION  
SQUARE







# Contact

**Matt J. Ogle**  
(212) 812 5982  
Matt.Ogle@jll.com

**Richard B. Hodos**  
(212) 479 9883  
Richard.Hodos@jll.com

**Michael Remer**  
(212) 220 4134  
Michael.Remer@jll.com

**Amanda Sujak**  
(212) 479 9865  
Amanda.Sujak@jll.com



MADISON  
CAPITAL



THE JACKSON  
GROUP, LLC

## Jones Lang LaSalle Brokerage, Inc.

330 Madison Avenue New York, NY 10017

DISCLAIMER Although information has been obtained from sources deemed reliable, neither Owner nor JLL makes any guarantees, warranties or representations, express or implied, as to the completeness or accuracy as to the information contained herein. Any projections, opinions, assumptions or estimates used are for example only. There may be differences between projected and actual results, and those differences may be material. The Property may be withdrawn without notice. Neither Owner nor JLL accepts any liability for any loss or damage suffered by any party resulting from reliance on this information. If the recipient of this information has signed a confidentiality agreement regarding this matter, this information is subject to the terms of that agreement.

© 2024 Jones Lang LaSalle IP, Inc. All rights reserved.

