

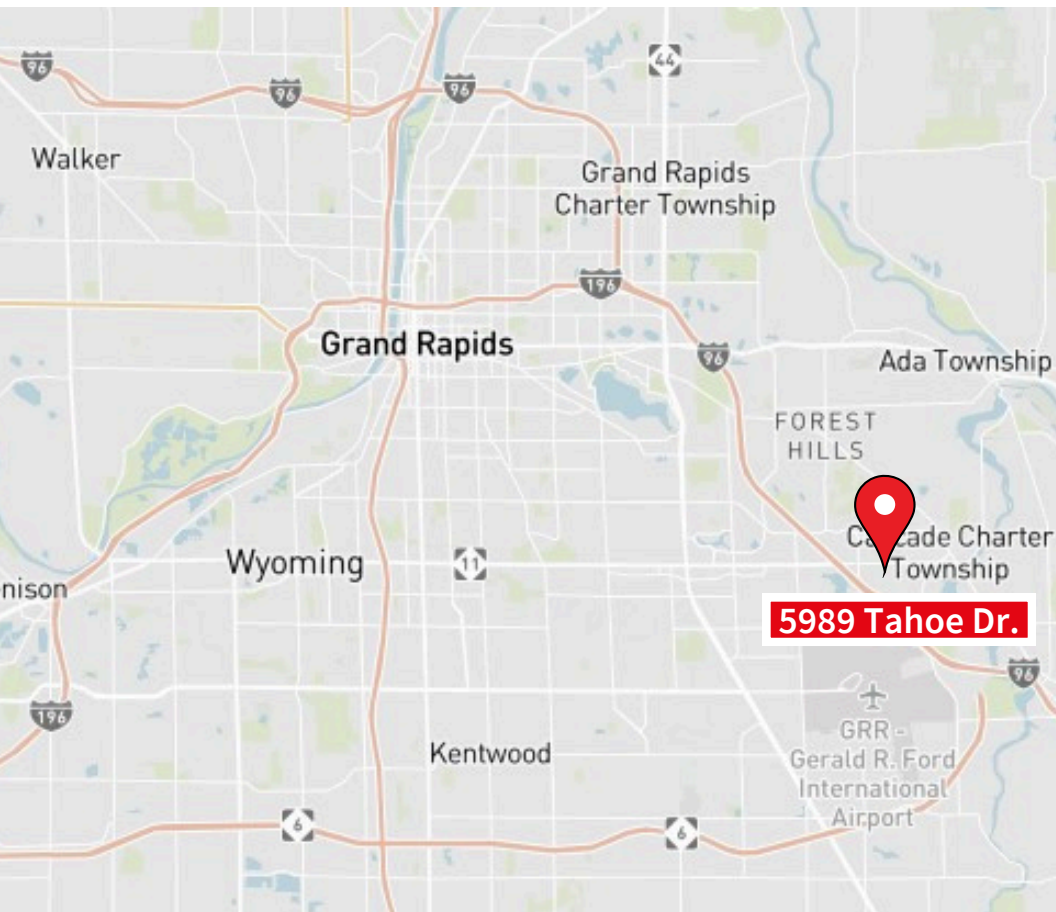


For sublease

5989 Tahoe Dr SE | Grand Rapids, MI
10,000 RSF Available

Property Highlights

5989 Tahoe Dr. is a Class B sublease opportunity in the heart of centennial park, and is conveniently located with great proximity to I-96 and local amenities.



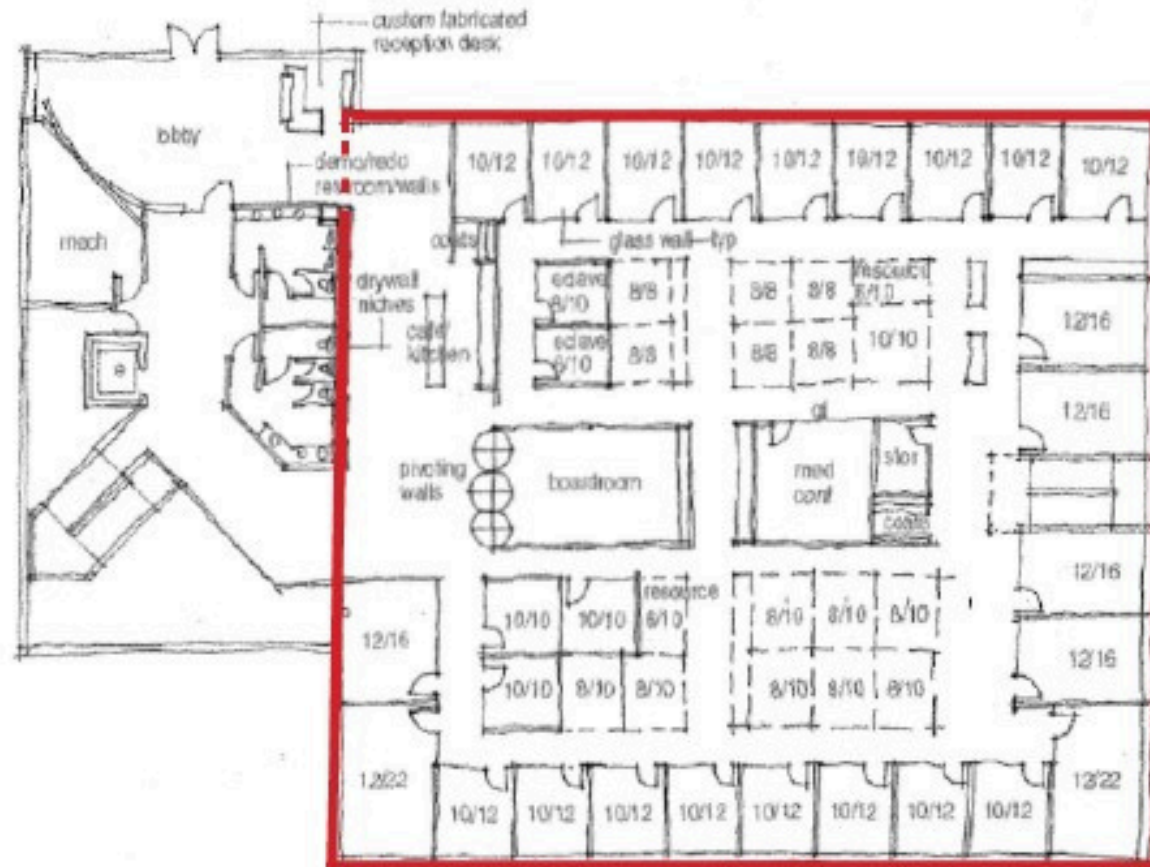
Office Space Available
10,000 RSF | \$13.50 MG



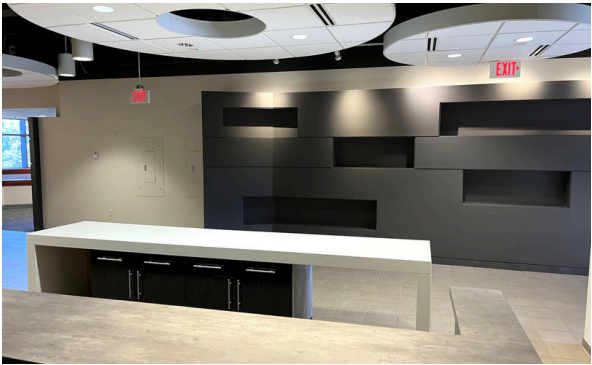
Details

- 10,000 RSF
- \$13.50 MG
- Ample parking
- Fully furnished space
- Dedicated entrance
- Entire floor
- Signage opportunities

1st Floor



Interior Photos





Jeff Karger

Executive Vice President
jeff.karger@jll.com
+1 616 649 3532

Chip Hurley, SIOR, CCIM

Senior Vice President
chip.hurley@jll.com
+1 616 304 5410