



WESTERN SUSSEX

BUSINESS CAMPUS

SEAFORD, DE

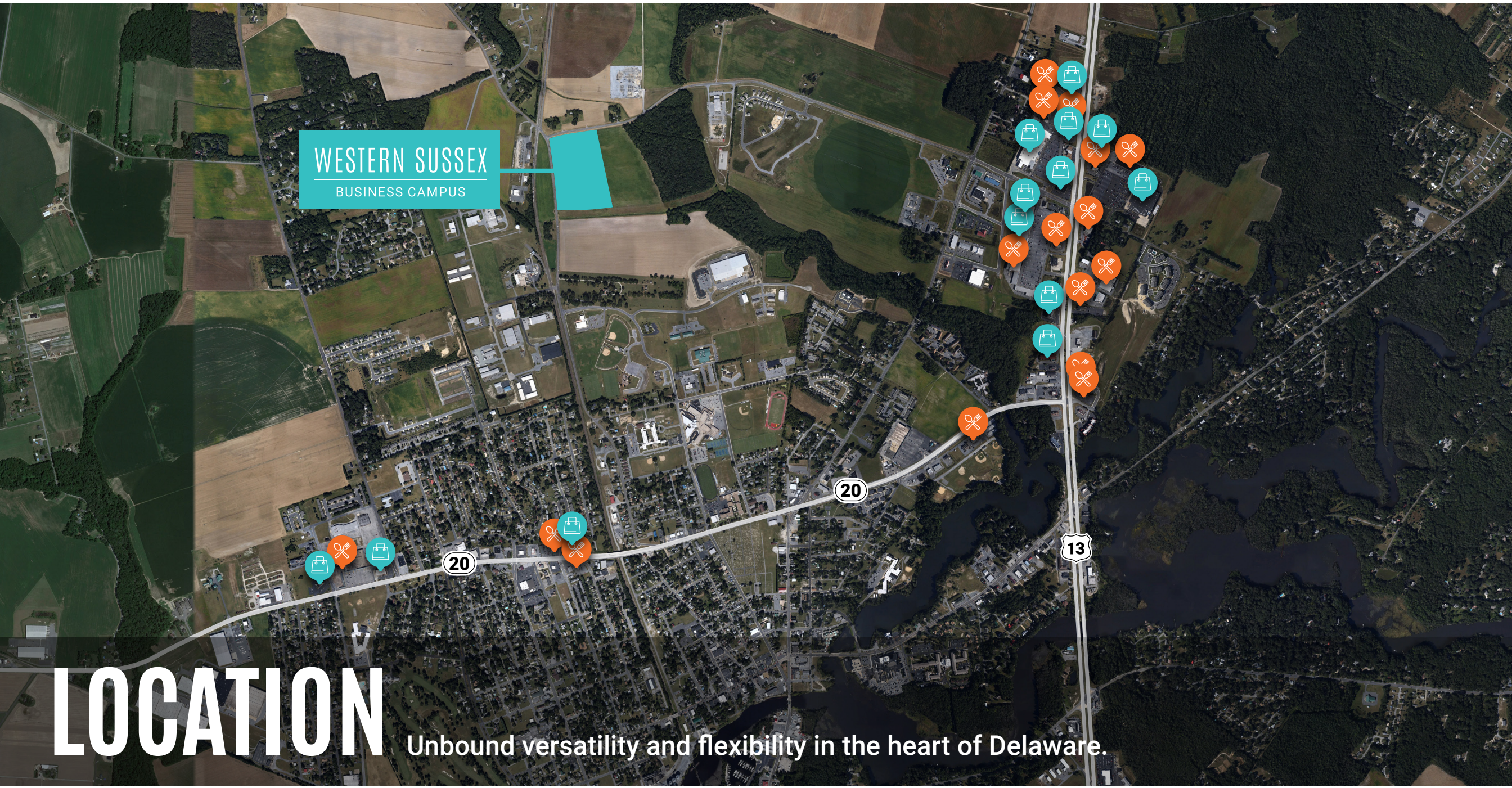
TWO 70,250 SF
NEW CONSTRUCTION
FLEX WAREHOUSE
BUILDINGS
ON OVER
50 ACRES



WESTERN SUSSEX

BUSINESS CAMPUS

A first class development crafted by first class developers, Western Sussex Business Campus is Delaware's premier new flex warehouse hotspot. Featuring two new construction, Class A 70,250 SF spec buildings, and with availability up to 500,000 SF across 50 acres, Western Sussex Business Campus is primed for top users looking for flexible, customizable space.



WESTERN SUSSEX
BUSINESS CAMPUS

LOCATION

Unbound versatility and flexibility in the heart of Delaware.

AMENITIES

FOOD AND DRINK

- Jersey Mike's Subs
- Texas Roadhouse
- IHOP
- Applebee's
- Shogun Japanese
- Grotto Pizza
- Chick-fil-A
- Smith's Cafe
- Stargate Diner
- Jumbo China
- Starbucks
- Taco Bell
- La Casita
- Sal's Italian
- Pizza King
- Davellis Bagel Cafe

SHOPPING & NECESSITIES

- Comfort Suites
- Days Inn & Suites by Wyndham Seaford
- Petco
- The UPS Store
- Food Lion
- Hallmark Shoppe
- Roses Discount Store
- FedEx
- Walmart
- Hampton Inn Seaford
- Lowe's Home Improvement
- AT&T
- Citizens Bank
- Rite Aid
- PNC Bank

DRIVE TIMES

- 3** minutes to Route 13
- 104** minutes to Wilmington
- 120** minutes to Philadelphia International Airport
- 150** minutes to Philadelphia
- 110** minutes to Baltimore
- 120** minutes to Washington, DC

Jamie Vari
+1 302 356 2862
jamie.vari@jll.com

Cindy Fleming
+1 302 356 2866
cindy.fleming@jll.com

Although information has been obtained from sources deemed reliable, neither Owner nor JLL makes any guarantees, warranties or representations, express or implied, as to the complete-ness or accuracy as to the information contained herein. Any projections, opinions, assumptions or estimates used are for example only. There may be differences between projected and actual results, and those differences may be material. The Property may be withdrawn without notice. Neither Owner nor JLL accepts any liability for any loss or damage suffered by any party resulting from reliance on this information. If the recipient of this information has signed a confidentiality agreement regarding this matter, this information is subject to the terms of that agreement. ©2024. Jones Lang LaSalle IP, Inc. All rights reserved.

