 **JLL** SEE A BRIGHTER WAY

For Lease

26743-26769 John R Road
Madison Heights, MI

1,350 SF - 5,750 SF Available

Property Overview

Office/retail center located on John R Road just south of Eleven Mile Road, Madison Heights, Michigan.

Up to 5,750 SF Available

Asking Rate: \$11.75/PSF NNN

Property Specifications

- One overhead door
- Building signage available
- Zoned B3
- 22 surface parking spaces
- Affordable office/retail space - ideal for small business owners

Availability:

1,350 - 5,750 SF

26761 John R

1,350 SF

26765 John R

2,200 SF

26769 John R

2,200 SF



JLL

Rachele Downs

Vice President

rachele.downs@jll.com

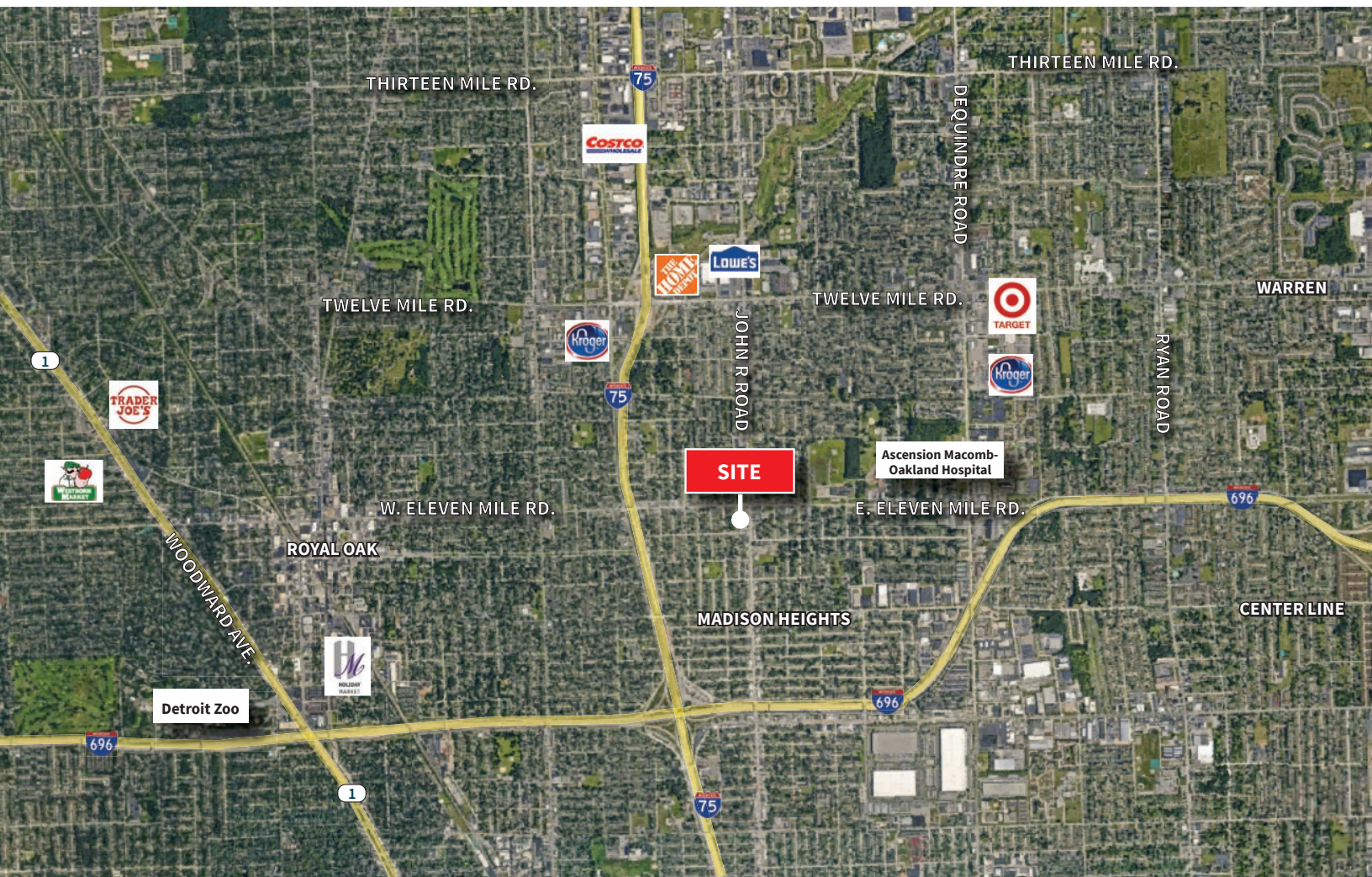
+1 248 581 3243

Robert Mihelich

Senior Vice President

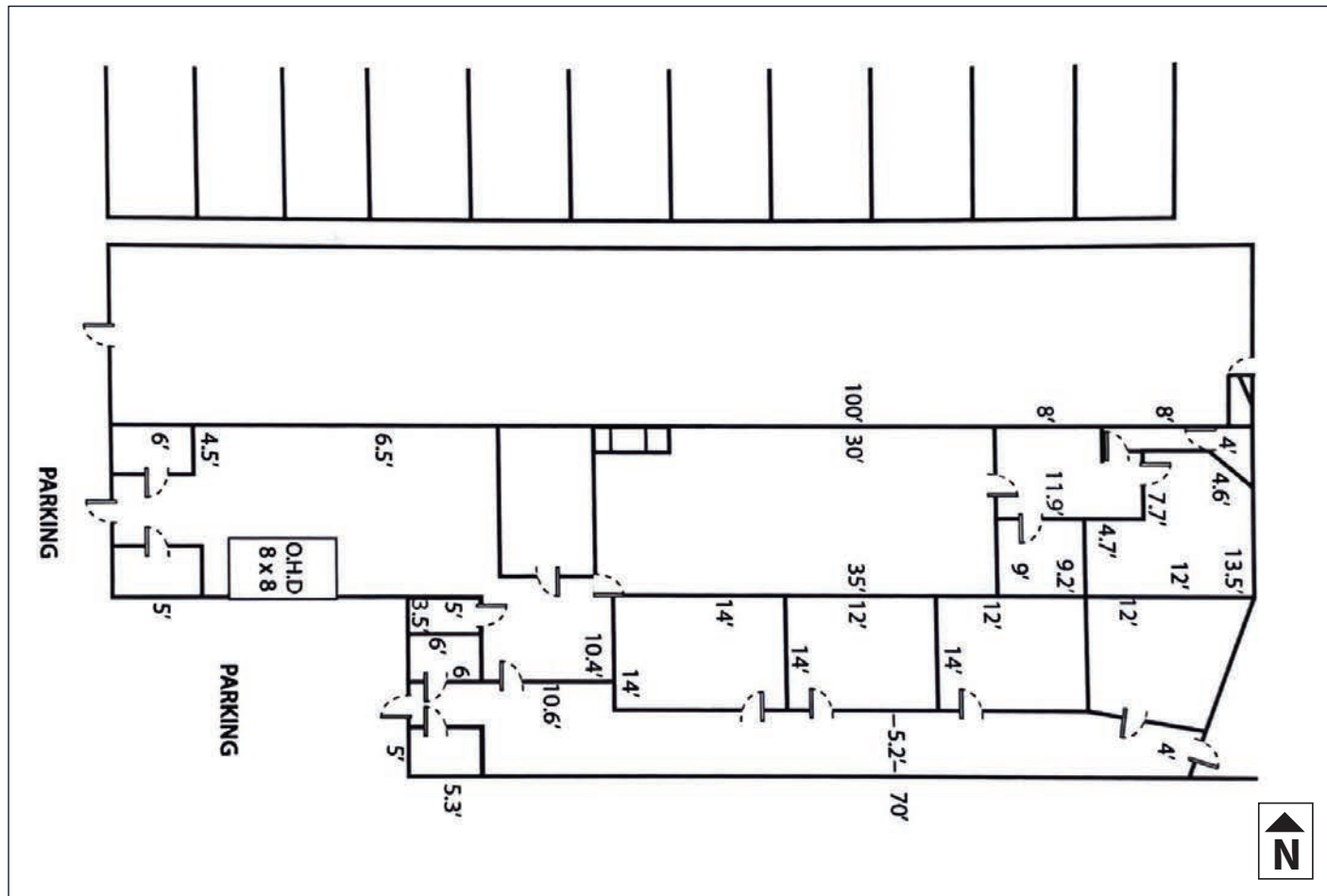
robert.mihelich@jll.com

+1 248 581 3366



	1 mile	3 miles	5 miles
Estimated population	16,731	131,777	348,223
Estimated households	7,853	60,607	152,707
Est. Average HH income	\$83,406	\$90,726	\$82,911
Traffic counts	22,472 ADT	John R Road and E 11 Mile Road	

Site Plan



JLL

Rachele Downs

Vice President

rachele.downs@jll.com

+1 248 581 3243

Robert Mihelich

Senior Vice President

robert.mihelich@jll.com

+1 248 581 3366