



— 630 N —
MICHIGAN AVENUE

BOUTIQUE SHOP SPACE AVAILABLE
ON THE MAGNIFICENT MILE

2,967 SF OF HIGH-END RETAIL NOW AVAILABLE

Situated in the heart of Chicago's Magnificent Mile, 630 N. Michigan Avenue presents an exceptional opportunity for luxury brands seeking a small shop corner space.

With its impressive frontage, this corner space offers a refined platform to introduce your brand to the discerning North Michigan Avenue audience.

HIGHLIGHTS



70' frontage on
Michigan Avenue



131,356 daytime
population
within $\frac{1}{2}$ mile



\$180,979 average
household income
within $\frac{1}{2}$ mile



31,800 vpd at
Michigan & Ontario



20M+ annual
visitors to the
Mag Mile



#1 in foot traffic
among US high
streets

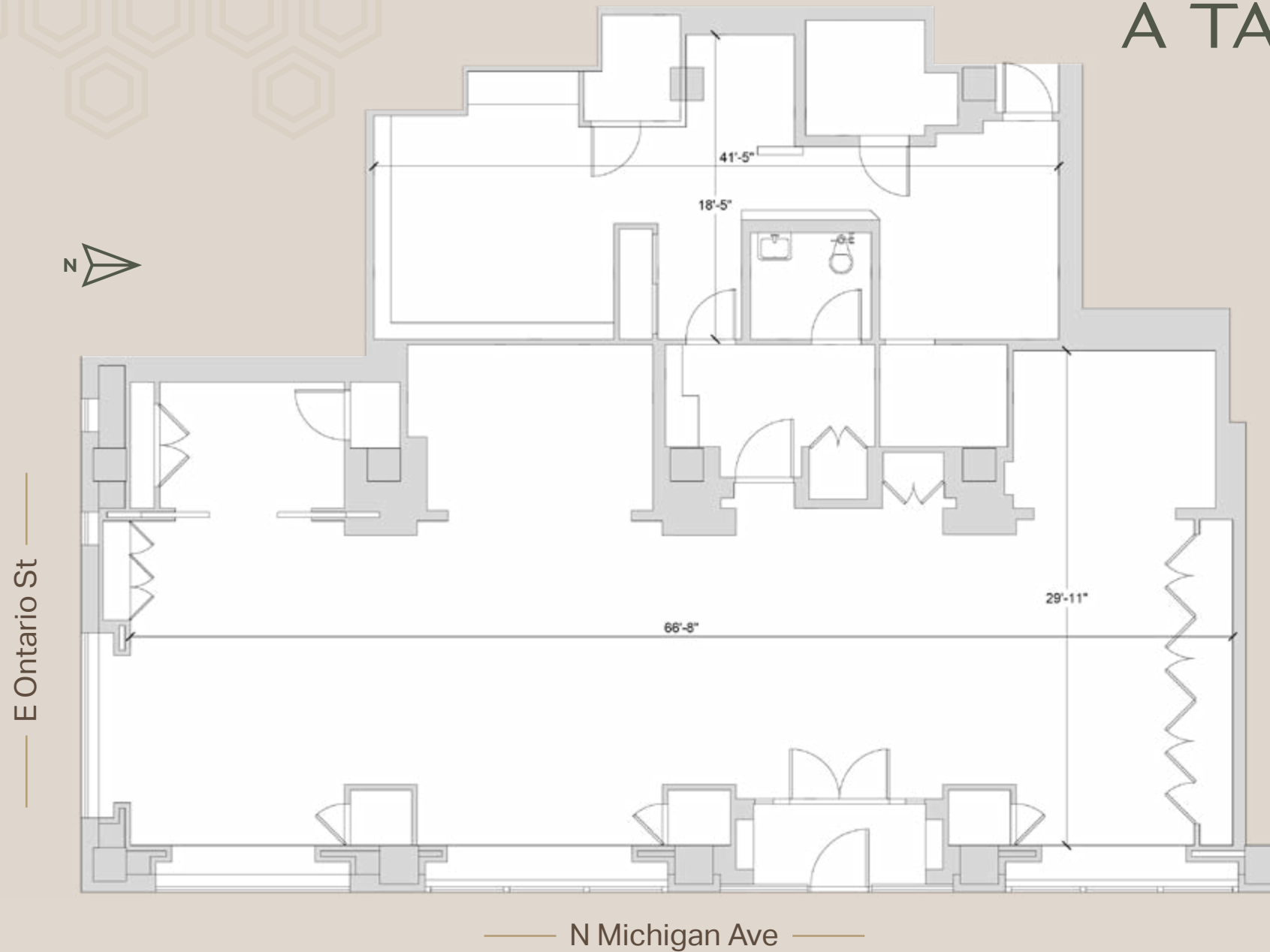


A TAILOR-MADE SPACE

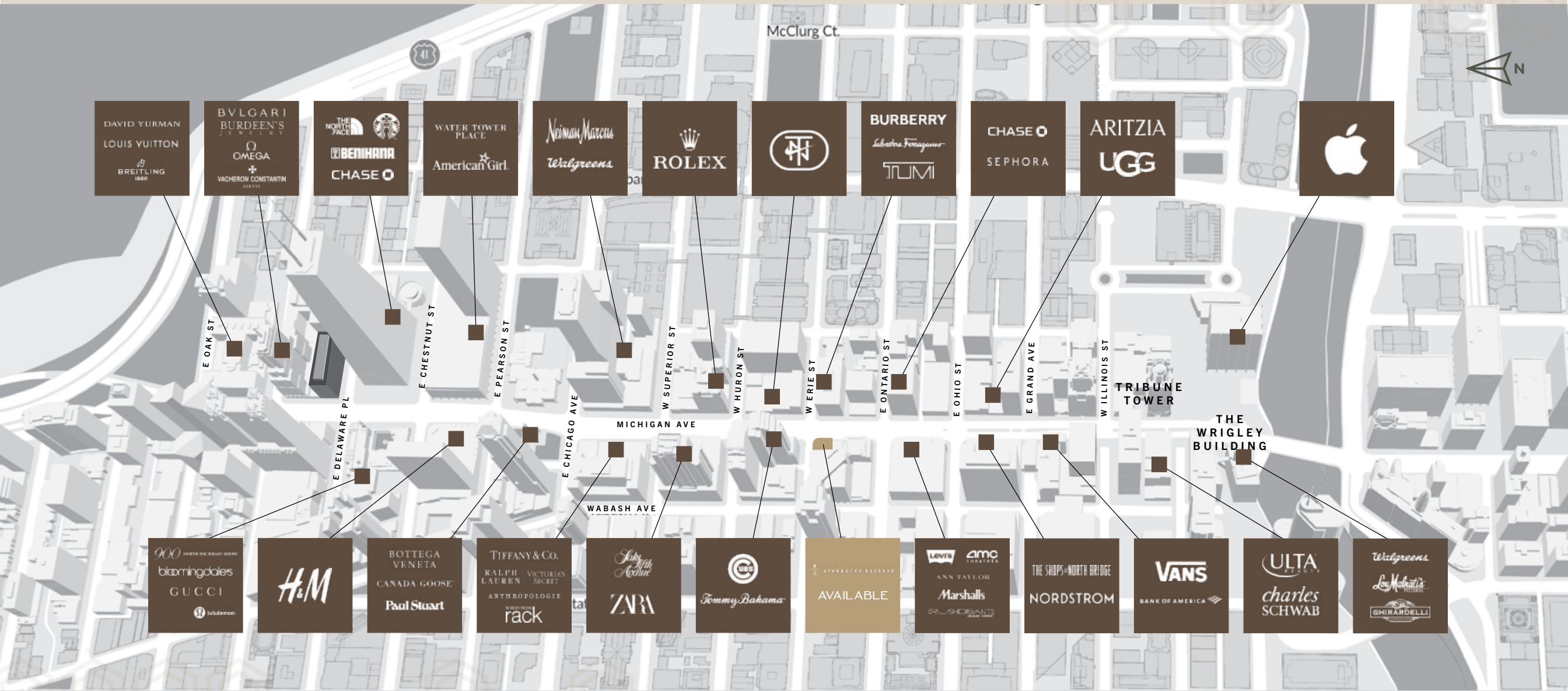
2,967 SF Available



View Virtual Tour



JOIN THE MILE





630 N

MICHIGAN AVENUE

CONTACT

Peter Caruso
+1 312 228 2926
peter.caruso@jll.com

Courtney Rouleau
+1 312 228 3431
courtney.rouleau@jll.com