



For lease

2457 Industrial Parkway W | Hayward

±27,257 SF on 1.42 AC

Freestanding warehouse with freezer & cooler



Property highlights

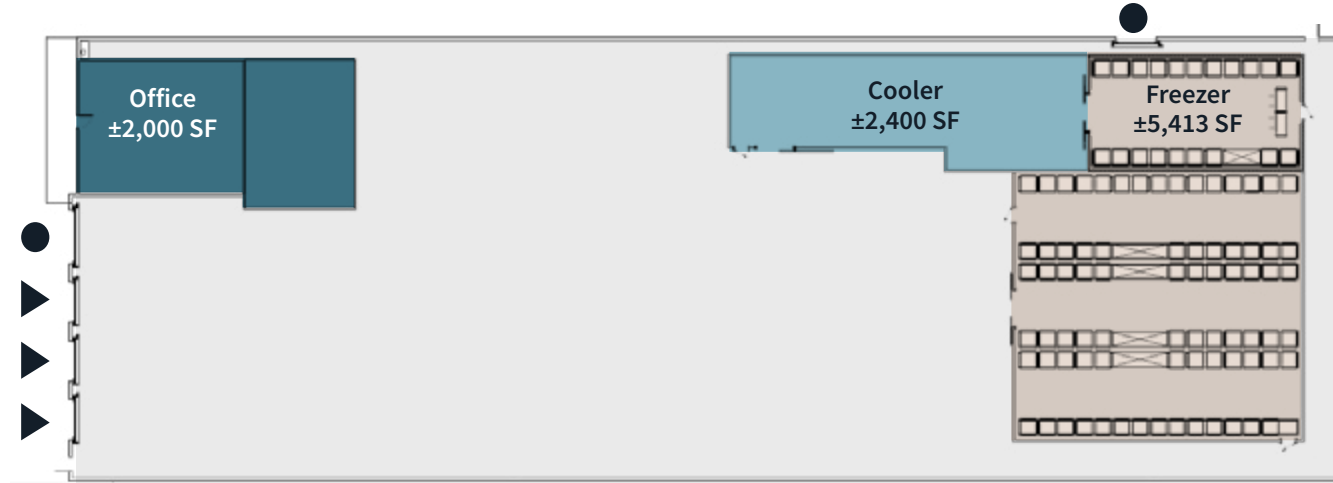
Docks

- 3 dock high doors (10'x10')
- Electric overhead doors
- Hydraulic pit levelers
- Weather seals
- Dock lights
- 2 grade level doors (12'x14')

Additional specifications

- ±27,257 SF stand alone building
- 1,200a @480v, 3-phase (tenant to verify)
- ±20'-24' clear height
- .33/2,000 GPM sprinklers
- Approx. 1/2 acre fenced and paved yard with LED lighting
- 32' W x 48' D column spacing
- Exterior power distribution for trailer/truck charging
- Climate controlled, insulated warehouse with space heaters
- Excellent access to I-880 and Hwy 92
- Frontage visibility along Industrial Pkwy

Floor plan | ±27,257 SF

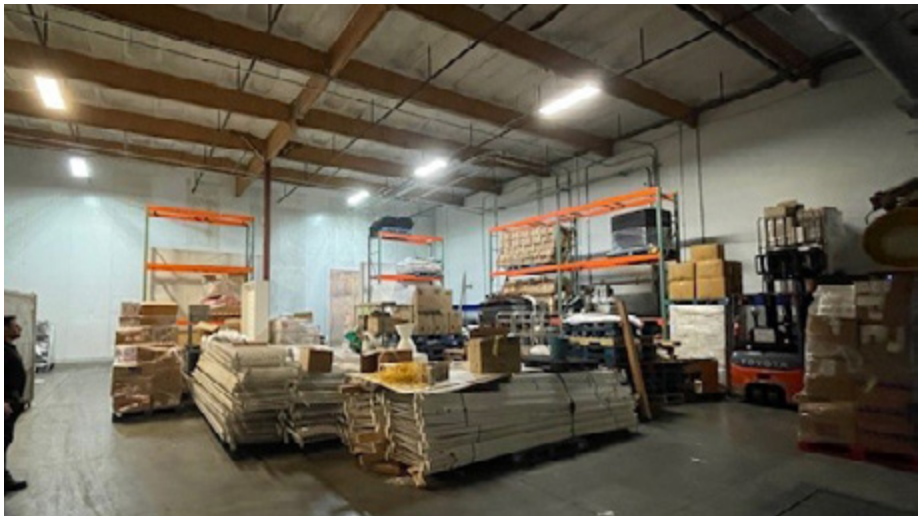


±2,000 SF
Office Space

±2,400 SF
Cooler (36* to 42*)
±19' clear height

±5,413 SF
Freezer (0* to -20*)
±19' clear height





Strategic location

2457 Industrial Parkway W / Hayward



For more information or to schedule a tour, please contact:



Eddie Shuai

RE Lic# 01454419

+1 510 285 5368

eddie.shuai@jll.com

Owen Friske

RE Lic# 02242302

+1 415 632 9450

owen.friske@jll.com

Jones Lang LaSalle Brokerage, Inc.

RE Lic# 01856260

Although information has been obtained from sources deemed reliable, neither Owner nor JLL makes any guarantees, warranties or representations, express or implied, as to the completeness or accuracy as to the information contained herein. Any projections, opinions, assumptions or estimates used are for example only. There may be differences between projected and actual results, and those differences may be material. The Property may be withdrawn without notice. Neither Owner nor JLL accepts any liability for any loss or damage suffered by any party resulting from reliance on this information. If the recipient of this information has signed a confidentiality agreement regarding this matter, this information is subject to the terms of that agreement. ©2024. Jones Lang LaSalle IP, Inc. All rights reserved.