

# For lease

Pre-Built Medical Office Space  
within Stony Brook Technology Center



## Property specifications

Available size	Unit #12: 3,655 SF Unit #14 & #15: 6,154 SF
Possession	Immediate
Rental rate	Upon request
Building features	<ul style="list-style-type: none"><li>• Pre-built medical office space</li><li>• Abundant parking</li><li>• Access to sewer</li><li>• Tenant controlled HVAC</li><li>• On-site property management</li></ul>
Location	<ul style="list-style-type: none"><li>• Conveniently located in the prestigious Stony Brook Technology Park</li><li>• Located within 5 miles of all three major local hospitals</li><li>• Easy access to all major roadways, including the Northern State Parkway &amp; Long Island Expressway</li></ul>

## 14 Technology Drive East Setauket, NY

### Ray Ruiz

Managing Director  
+1 631 962 2890  
[ray.ruiz@jll.com](mailto:ray.ruiz@jll.com)

### Marianne Dugan

Vice President  
+1 631 962 2891  
[marianne.dugan@jll.com](mailto:marianne.dugan@jll.com)

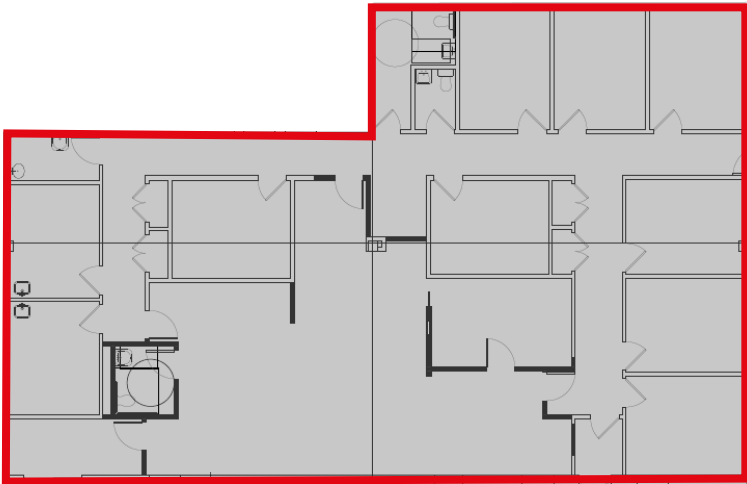
### John A. Nielsen

Vice President  
+1 631 962 7382  
[johna.nielsen@jll.com](mailto:johna.nielsen@jll.com)



Floor plan

Unit #12 : 3,655 SF



Unit #14 & #15: 6,154 SF

