



3,054 SF AVAILABLE

WOODSTOCK SQUARE SUBLEASE

4103-4111 SE Woodstock Blvd | Portland OR, 97202

FOR LEASING INFORMATION:

Candace Lounsbury

Licensed in OR & WA

+1 503 937 2131

Candace.Lounsbury@jll.com

Andrew Rosengarten

Licensed in OR

+1 503 972 8000

Andrew.Rosengarten@jll.com



www.jll.com/portland

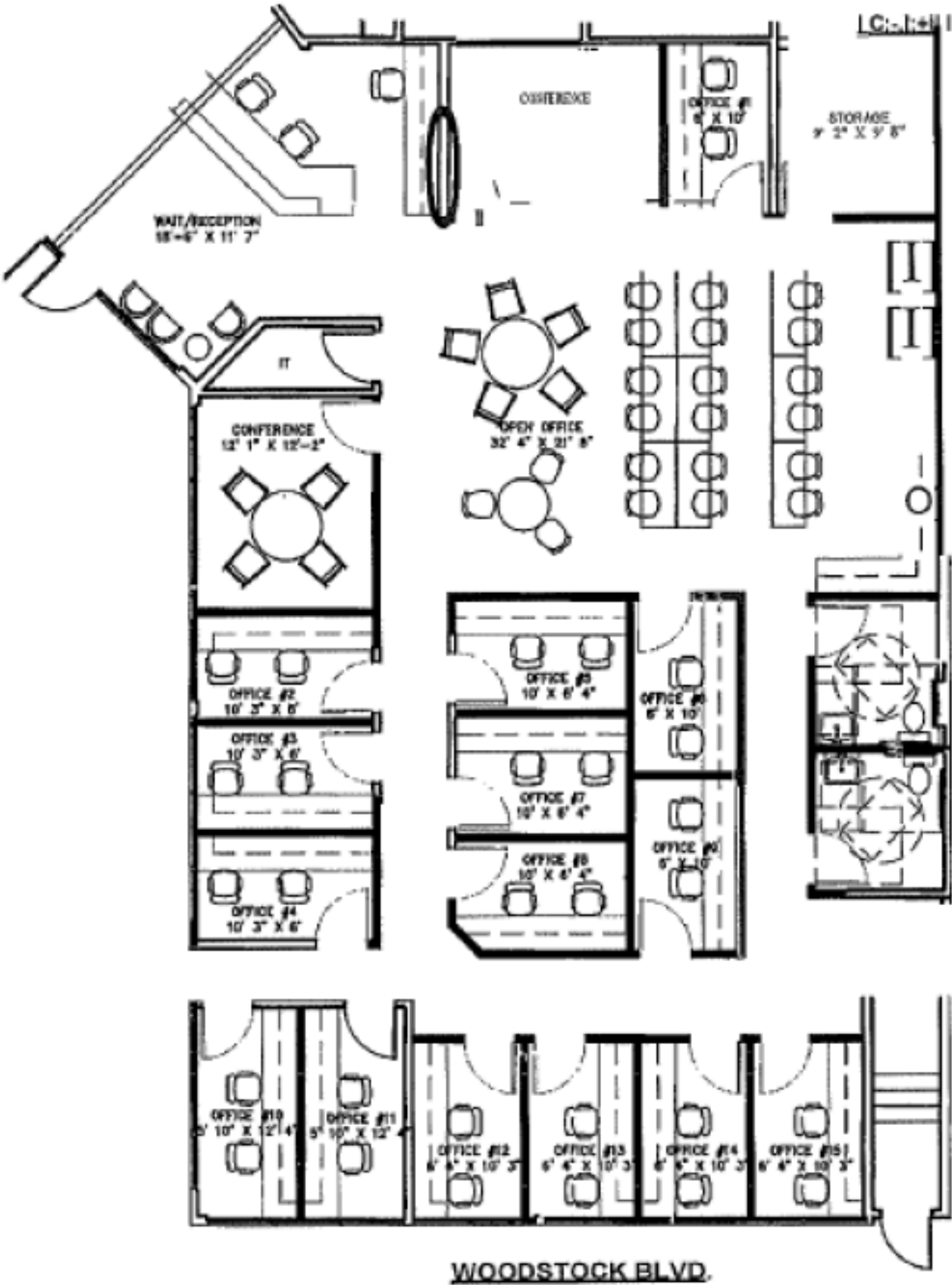
The Space

- Can be combined with direct vacancy for up to 5,933 SF of contiguous space
- Great visibility service office or retail space on busy Woodstock Blvd
- Skylights bring in natural light throughout
- Warm reception area leading to open office and kitchenette, conferencing space, and up to 17 private offices
- Sublease through May 2028

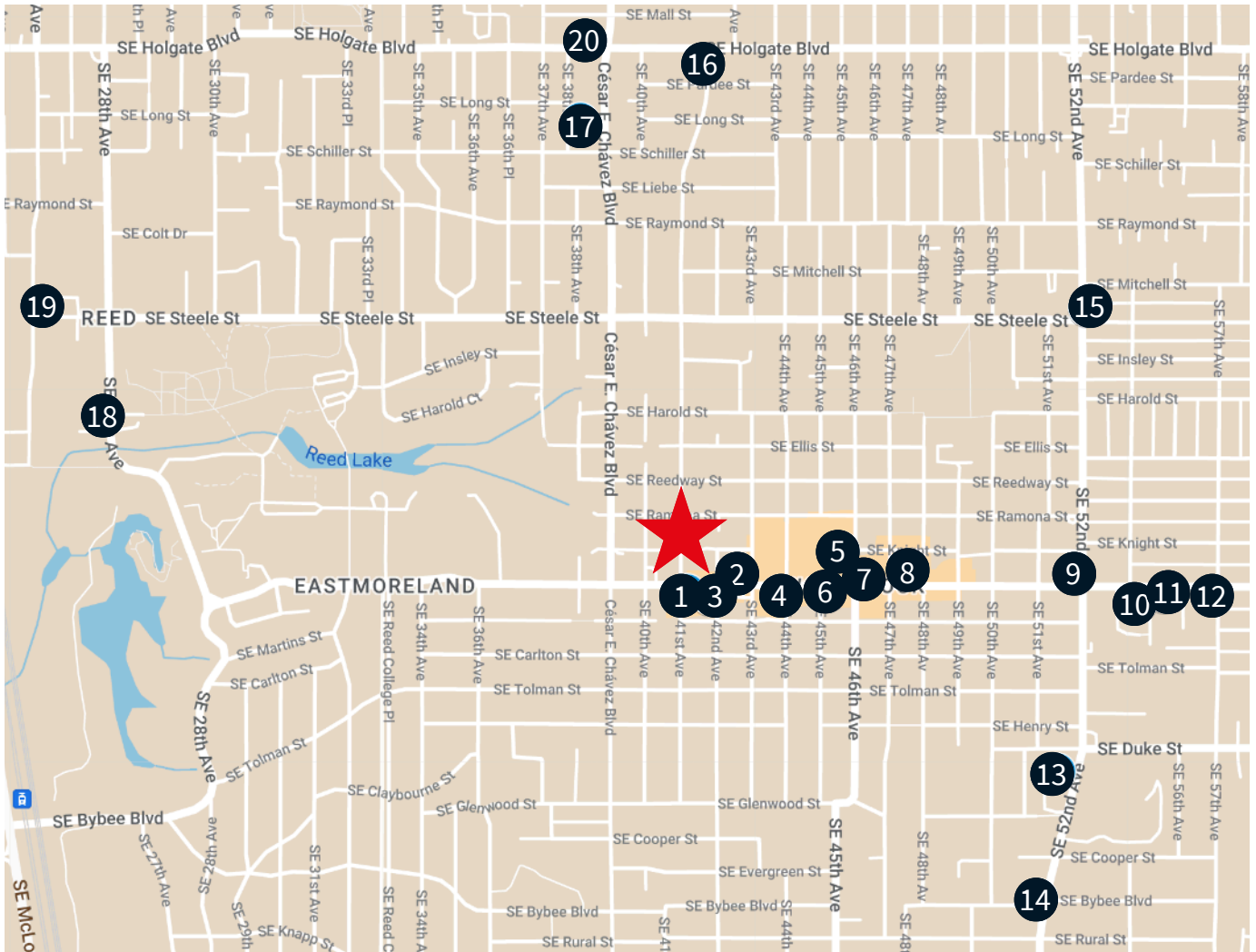
Call brokers for rate



Floor plan



Nearby Amenities



Restaurants & Grocery ●

- | | |
|-------------------------------|-----------------------------|
| 1. Laughing Planet | 11. Bergerac |
| 2. Harder Day Coffee Company | 12. Super Torta |
| 3. Otto's Sausage Kitchen | 13. Hidden East Tavern |
| 4. Double Mountain Woodstock | 14. Mehri's Cafe and Bakery |
| 5. Safeway | 15. Toast |
| 6. New Seasons Market | 16. Keeper Coffee Co |
| 7. Delta Cafe | 17. Trader Joe's |
| 8. The Heist Bar & Food Carts | 18. Breaking Buns Food Cart |
| 9. Heart Coffee | 19. Gigantic Brewing |
| 10. Bridge City Pizza | 20. Cafe Rowan |

FOR LEASING INFORMATION:

Candace Lounsbury

Licensed in OR & WA

+1 503 937 2131

Candace.Lounsbury@jll.com

Andrew Rosengarten

Licensed in OR

+1 503 972 8000

Andrew.Rosengarten@jll.com

