

FOR LEASE

AIRPARK 130

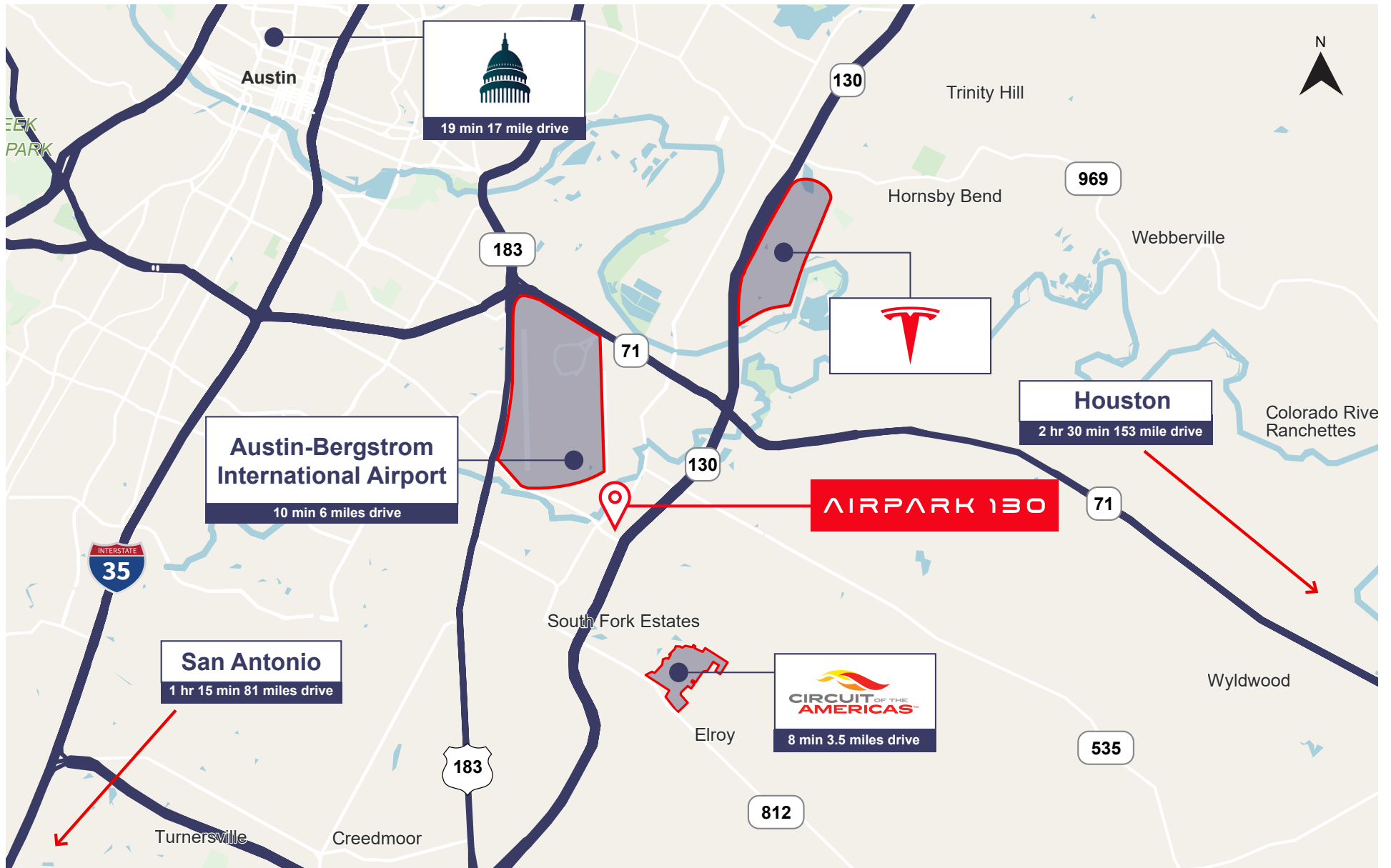
3 BUILDINGS: PHASE 1 DELIVERING Q3-2025



CLARIUS
PARTNERS

TOTAL PROJECT: 6 BUILDINGS | 982,700 SF | SH 130 & ELROY RD | AUSTIN, TX

LOCATION



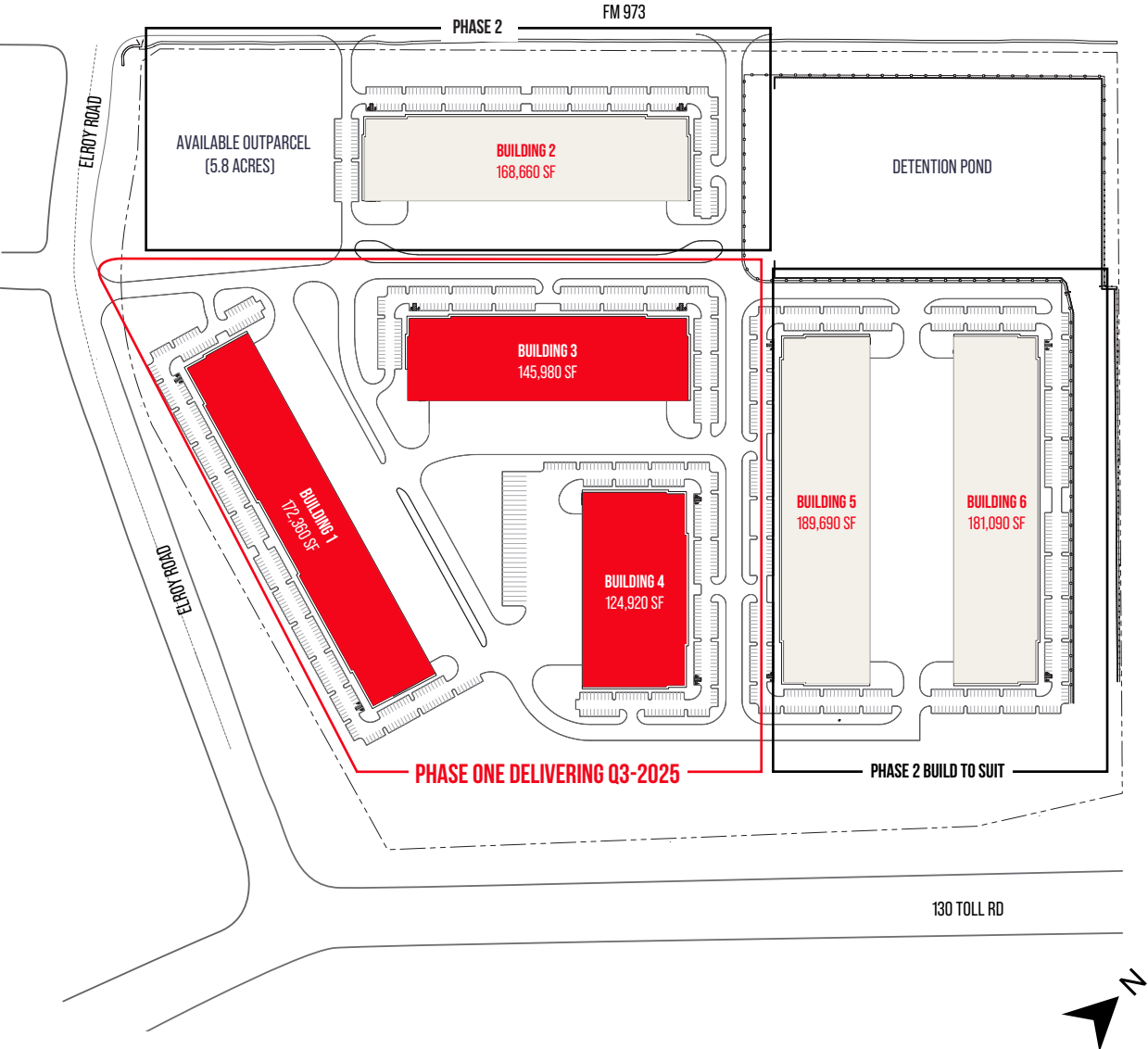
LOCATION - ACCESSIBILITY



SITE PLAN

Phase 1 Delivering Q3-2025

6 BUILDINGS | 982,700 SF |
SH 130 & ELROY RD | AUSTIN, TX



BUILDING 1

Building SF	172,360 SF
Dock Doors	57 Doors
Building Dimensions	180' X 972'
Drive-In Doors	2 Doors
Truck Court Depth	135'
Car Parking Spots	289 Parking Spots
Building Clear Height	32'

BUILDING 3

Building SF	145,980 SF
Dock Doors	39 Doors
Building Dimensions	210' X 702'
Drive-In Doors	2 Doors
Truck Court Depth	135'
Car Parking Spots	233 Parking Spots
Building Clear Height	32'

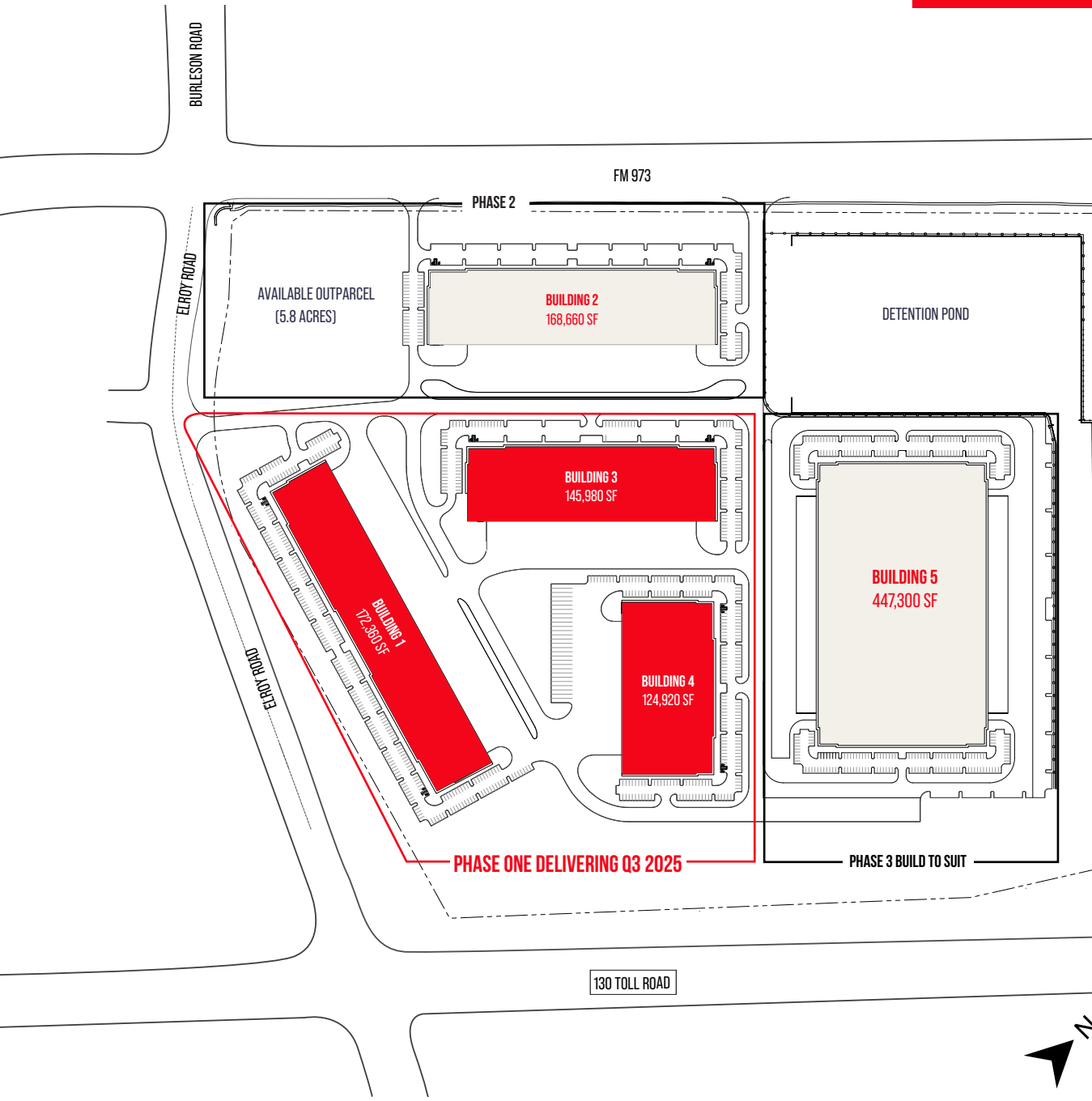
BUILDING 4

Building SF	124,920 SF
Dock Doors	25 Doors
Building Dimensions	260' X 486'
Drive-In Doors	2 Doors
Truck Court Depth	140'
Car Parking Spots	233 Parking Spots
Trailer Parking Spaces	28 Spaces
Building Clear Height	32'

SITE PLAN

Phase 2 - Sample Cross Dock Plan

SAMPLE BUILD TO SUIT LAYOUT |
SH 130 & ELROY RD | AUSTIN, TX



Build to suit

Cross Dock

Building SF - Up to 447,300 SF

Dock Doors - 88

Dimensions - 460 x 856

Drive in Doors - 2

Car Parking - 230

Trailer Parking - 71

AIRPARK 130

6025 FM 973 RD CITY OF AUSTIN, TRAVIS COUNTY TX 78617

Ace Schlameus

512.535.8104

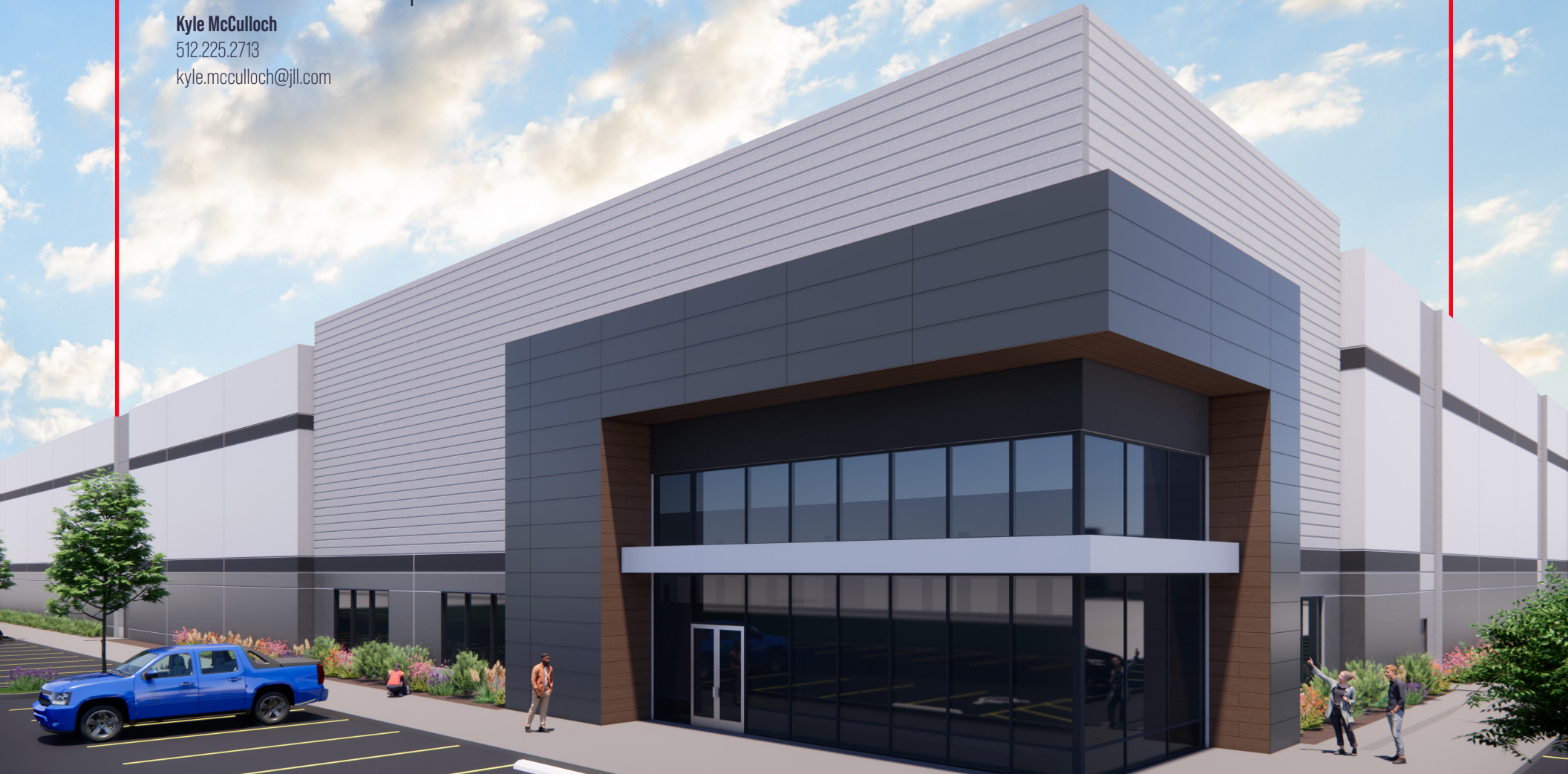
ace.schlameus@jll.com

Kyle McCulloch

512.225.2713

kyle.mcculloch@jll.com

Although information has been obtained from sources deemed reliable, neither Owner nor JLL makes any guarantees, warranties or representations, express or implied, as to the completeness or accuracy as to the information contained herein. Any projections, opinions, assumptions or estimates used are for example only. There may be differences between projected and actual results, and those differences may be material. The Property may be withdrawn without notice. Neither Owner nor JLL accepts any liability for any loss or damage suffered by any party resulting from reliance on this information. If the recipient of this information assigned a confidentiality agreement regarding this matter, this information is subject to the terms of that agreement. ©2024 Jones Lang LaSalle IP, Inc. All rights reserved.



CLARIUS
PARTNERS