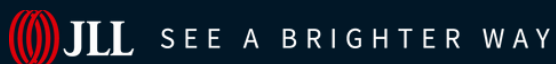




For lease

Westview Shopping Center

5748 Baltimore National Pike
Catonsville, MD 21228

**Joe Botzler**

Senior Vice President

Joe.Botzler@jll.com

O: +1 443 452 1510

M: +1 410 967 5945

Ana Henrich

Vice President

Ana.Henrich@jll.com

O: +1 443 451 2619

M: +1 443 465 4384

Thomas Jackman

Executive Vice President

Thomas.Jackman@jll.com

O: +1 202 719 5624

M: +1 301 580 1512

Property highlights

- 610,103 SF shopping center anchored by Maryland's top performing Lowe's & Sam's Club.
- Close proximity to the University of Maryland, Baltimore County (UMBC)
- Outstanding location directly off of Baltimore National Pike and seconds from I-695 ramp (200,416 VPD)

Available retail spaces

- 2,553 SF
- 2,696 SF
- 28,000 SF



Excellent Co Tenancy



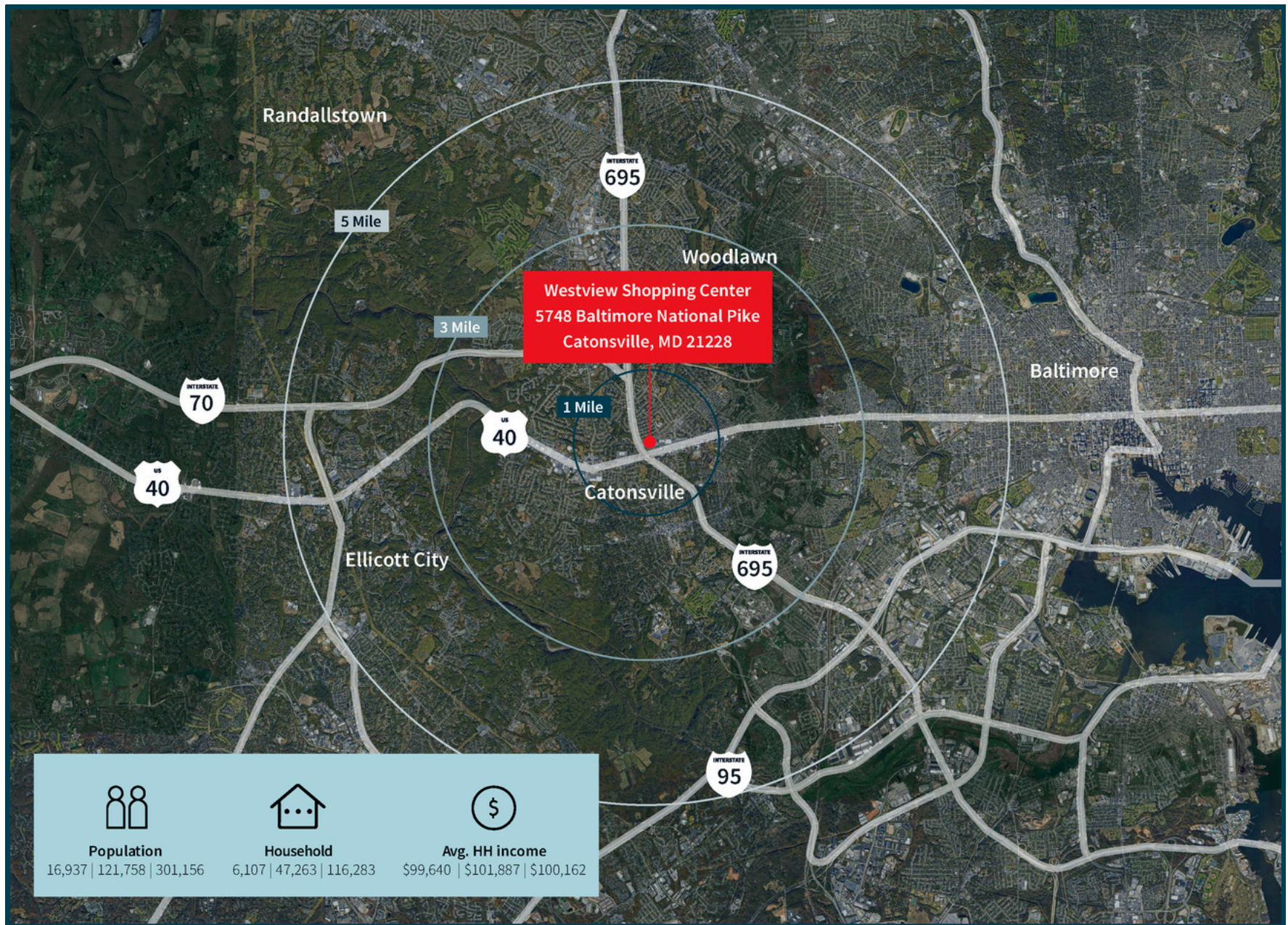
VALUE CITY
FURNITURE

Marshalls

ROSS
DRESS FOR LESS



Market overview



Nearby retailers



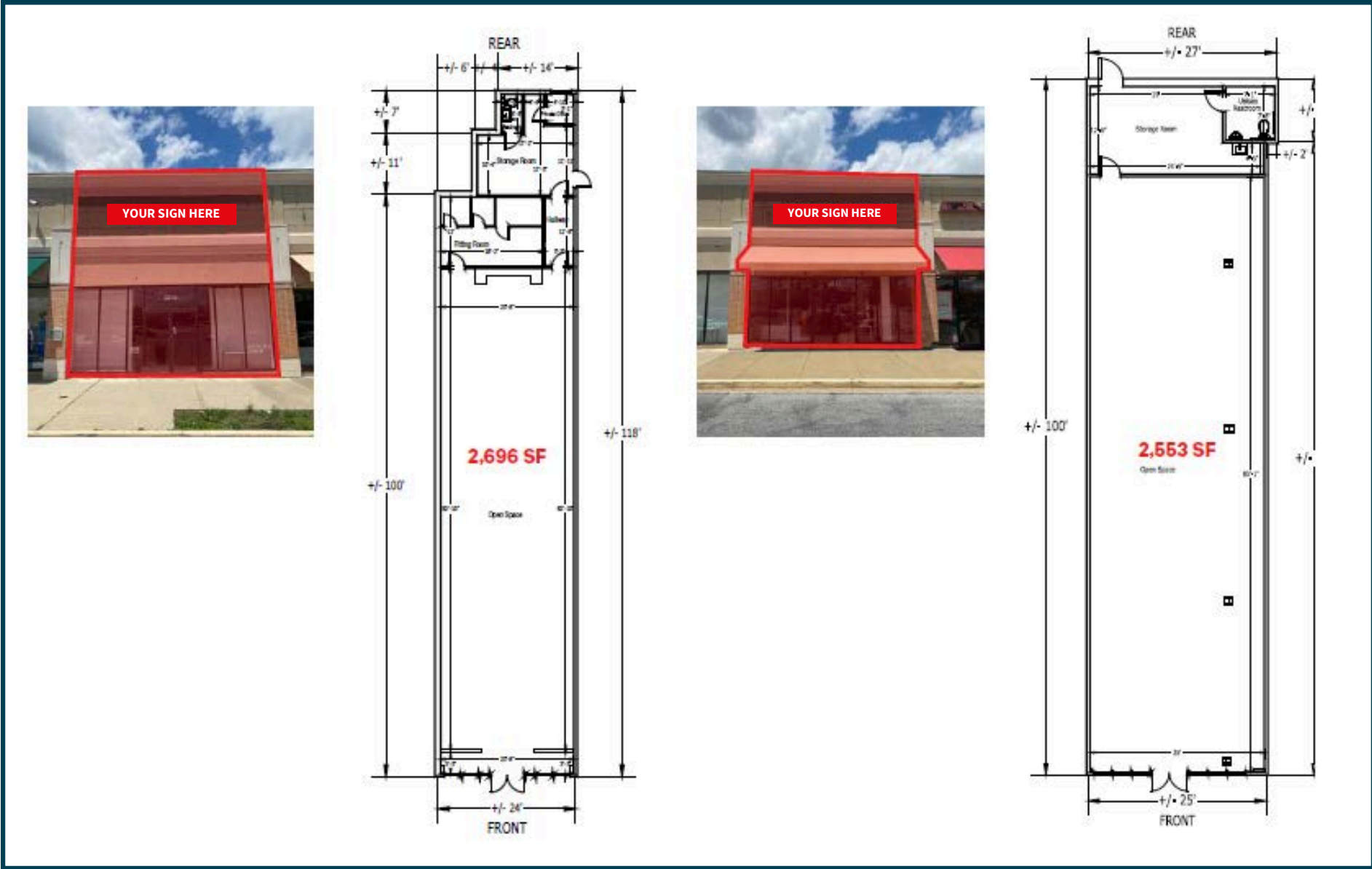
Aerial view



Site plan



Spaces available





**For more information,
please contact:**

jll.com

Joe Botzler
Senior Vice President
Joe.Botzler@jll.com
O : +1 443 452 1510
M : + 1 410 967 5945

Ana Henrich
Vice President
Ana.Henrich@jll.com
O : +1 443 451 2619
M : +1 443 465 4384

Thomas Jackman
Executive Vice President
Thomas.Jackman@jll.com
O : +1 202 719 5624
M : +1 301 580 1512



Although information has been obtained from sources deemed reliable, JLL does not make any guarantees, warranties or representations, express or implied, as to the completeness or accuracy as to the information contained herein. Any projections, opinions, assumptions or estimates used are for example only. There may be differences between projected and actual results, and those differences may be material. JLL does not accept any liability for any loss or damage suffered by any party resulting from reliance on this information. If the recipient of this information has signed a confidentiality agreement with JLL regarding this matter, this information is subject to the terms of that agreement. ©2023. Jones Lang LaSalle IP, Inc. All rights reserved.