

WILLIAMSBURG, BROOKLYN
RETAIL OPPORTUNITY

53 BROADWAY

Northeast Corner of Broadway & Wythe Avenue



Ryan P. Condren
+1 212 220 4117
ryan.condren@jll.com

George Danut
+1 212 220 4121
george.danut@jll.com

53 BROADWAY

Location

Northeast Corner of Broadway & Wythe Avenue

Size

Ground floor: 3,440 sf

Lower Level: 1,500 sf

Ceiling Height

10'

8'

Retail at the base of a 75 unit residential building in the heart of the iconic neighborhood, Williamsburg, Brooklyn

Strong corner location with significant street frontage

Restaurant infrastructure in space

Frontage

59' 1/2" on Broadway

63'7" on Wythe Avenue

Possession

Q4 2024

Transportation

Few blocks from Marcy Avenue subway station, servicing M and J lines, with over 4 million passengers annually

Neighboring Retailers

Lavender Lake

Marlow & Daughters

Peter Luger Steak House

Diner

Meadowsweet

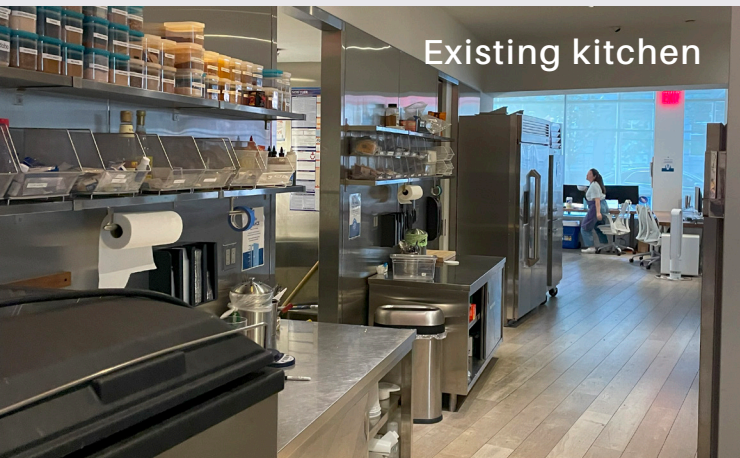
Motorino Pizza

City Acres Market

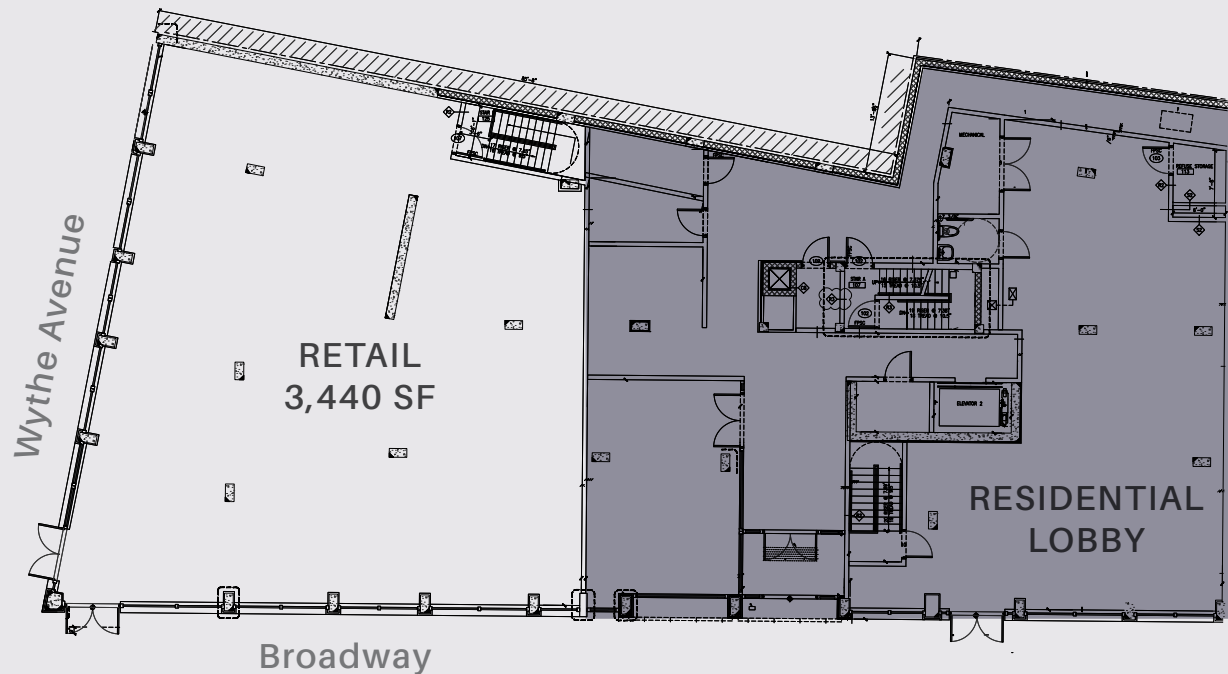




53 BROADWAY GROUND FLOOR



Existing kitchen



Although information has been obtained from sources deemed reliable, neither Owner nor JLL makes any guarantees, warranties or representations, express or implied, as to the completeness or accuracy as to the information contained herein. Any projections, opinions, assumptions or estimates used are for example only. There may be differences between projected and actual results, and those differences may be material. The Property may be withdrawn without notice. Neither Owner nor JLL accepts any liability for any loss or damage suffered by any party resulting from reliance on this information. If the recipient of this information has signed a confidentiality agreement regarding this matter, this information is subject to the terms of that agreement. ©2024 Jones Lang LaSalle IP, Inc. All rights reserved.