



McLaren Lapeer Region
Medical Office Building

For Lease

Up to 12,000 SF Available
1200 Barry Drive | Lapeer, MI

Property Highlights

McLaren Lapeer Region Medical Office Building, 1200 Barry Drive is a multi-specialty care facility serving patients of all ages in the Lapeer community and surrounding areas.

Conveniently located across the street from McLaren Lapeer Region Hospital, the office is a designated Patient-Centered Medical Home with a team of experienced providers committed to providing top-rate health care to the community.

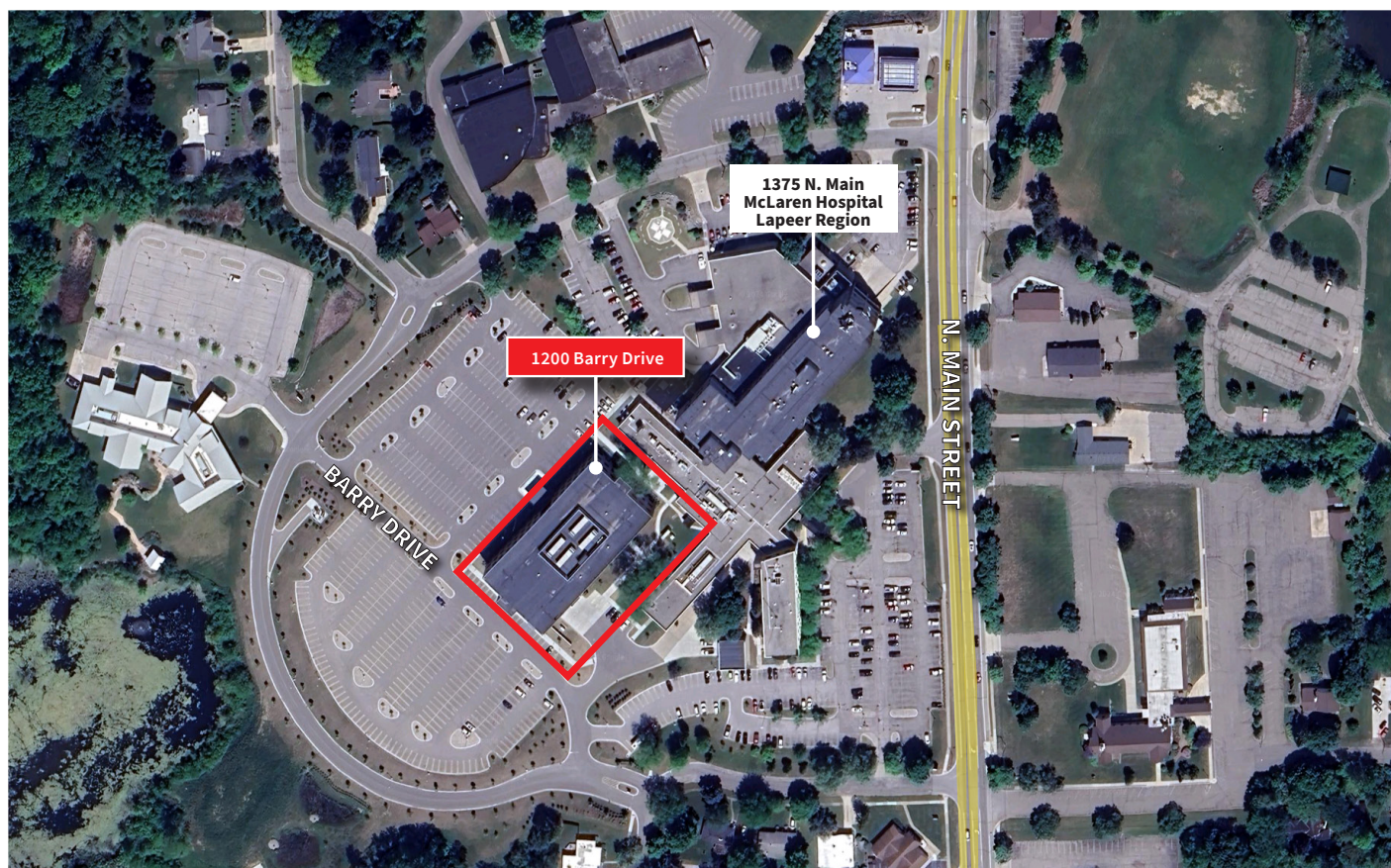
2,500 SF - 12,000 SF Available

Asking Rate: \$21.75/PSF NNN

First Floor	+/- 2,500 SF available
--------------------	------------------------

Second Floor	Fully Occupied
---------------------	----------------

Third Floor	+/- 5,908 SF available +/- 3,760 SF available
--------------------	--



1200 Barry Drive / Lapeer

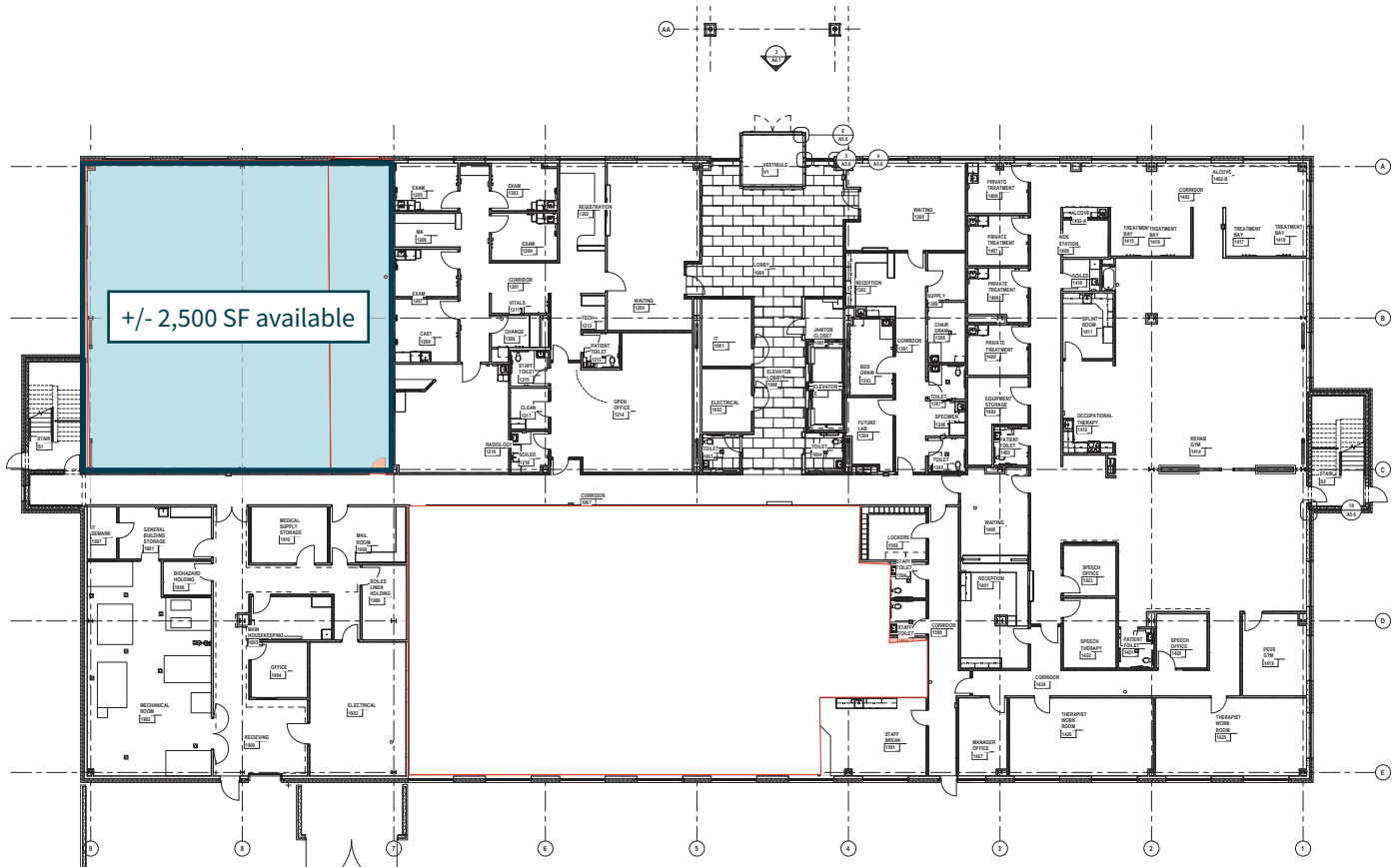


Availability

1st Floor Plan

+/- 2,500 SF available

\$21.75/PSF NNN



JLL

Robert Mihelich

robert.mihelich@jll.com

+1 248 581 3366

Rachele Downs

rachele.downs@jll.com

+1 248 581 3243

Miriam Rhein

miriam.rhein@jll.com

+1 248 535 0335

Availability

3rd Floor Plan

+/- 5,908 SF available

+/- 3,760 SF available

\$21.75/PSF NNN



JLL

Robert Mihelich

robert.mihelich@jll.com

+1 248 581 3366

Rachele Downs

rachele.downs@jll.com

+1 248 581 3243

Miriam Rhein

miriam.rhein@jll.com

+1 248 535 0335

Location map



22 Miles
Flint

34 Miles
Pontiac

58 Miles
Saginaw

JLL

Robert Mihelich
robert.mihelich@jll.com
+1 248 581 3366

Rachele Downs
rachele.downs@jll.com
+1 248 581 3243

Miriam Rhein
miriam.rhein@jll.com
+1 248 535 0335