



CORPORATE
CREATIVE



AN ENHANCED User Experience

Large-scale renovations
have transformed **SIXTH+
MAIN** into a workplace you'll
want to be a part of



OUTDOOR TERRACE



High-end identity

Newly completed two-story
open air lobby that promotes
comfort and collaboration.



Ultramodern workspaces

Thoughtfully designed
to enhance productivity
and creativity.



Amenities at your fingertips

Artisanal coffee and sandwich cafe will
be conveniently located in the lobby.

LOBBY



CONFERENCE CENTER

WHERE Business + Culture INTERSECT

Building Highlights:

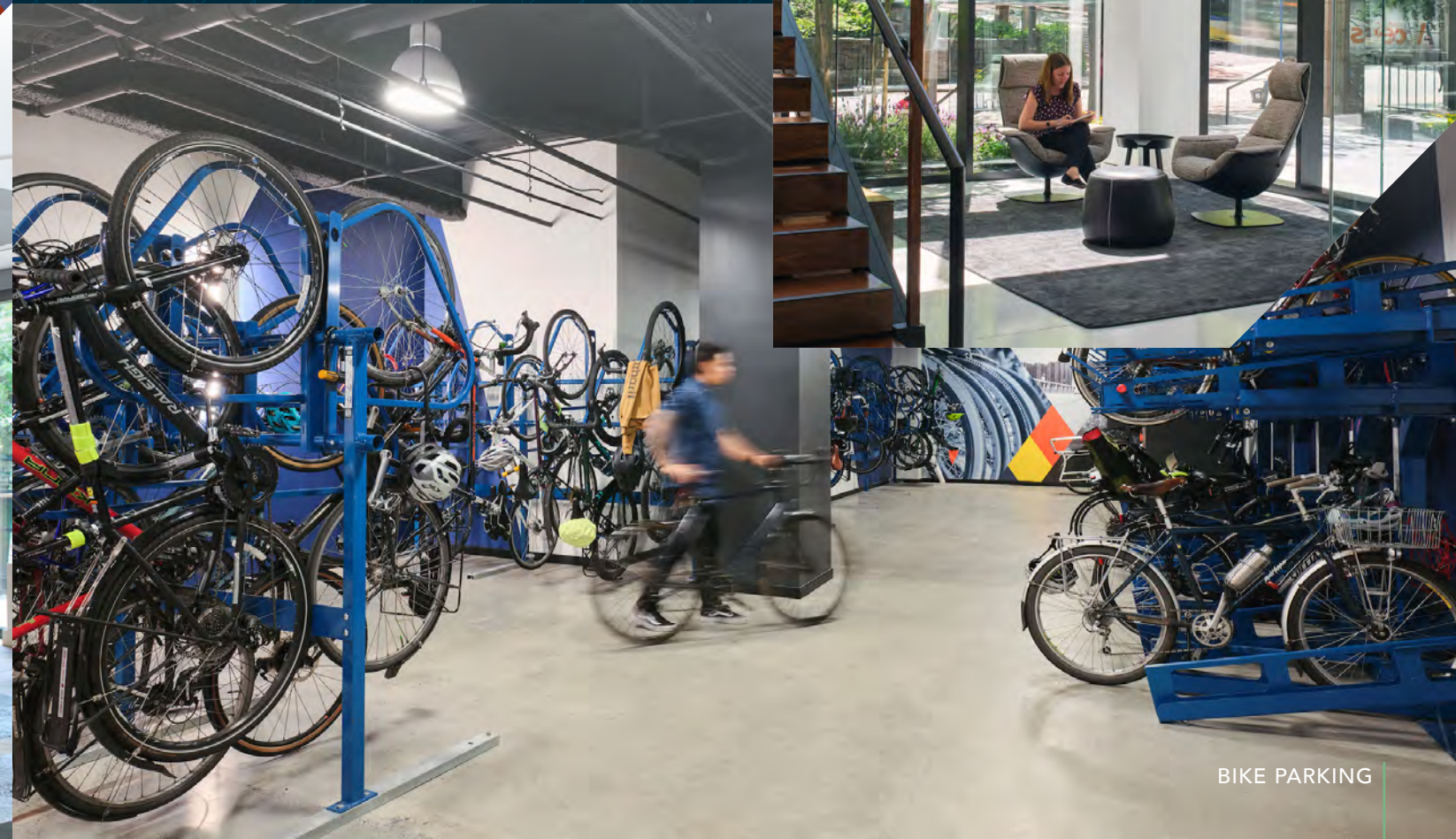
- + Class A, LEED Gold-EB office tower
- + Flexible work space with efficient floor plans
- + Extensive lobby and common area renovations completed in 2019 including destination elevators
- + On-site cafe, sandwich shop, and retail amenities
- + Building conference center and tenant lounge
- + Secure bike hub adjacent to high density shower and locker room facilities
- + State-of-the-art tenant fitness center
- + 24-hour security and after hours card-key access system
- + Outdoor terrace with yard games, fire pits, and grilling space
- + 1/1,000 SF on-site parking ratio



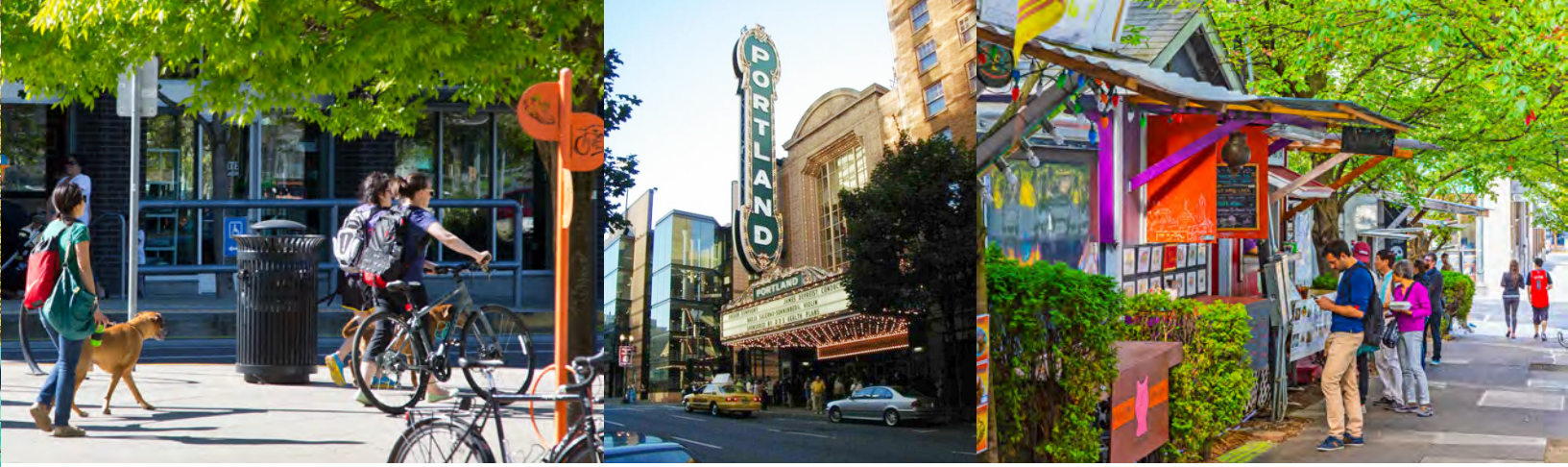
TENANT LOUNGE

Location Highlights:

- + Conveniently located in the heart of Portland's central business district
- + Close proximity to area freeways
- + Commuter oriented location on the Portland transit mall with access by MAX light rail, bus and bike
- + Served by several nearby parking garages
- + Surrounded by a wide variety of Portland's best restaurants, cafes, hotels, and entertainment
- + Panoramic views of downtown, the river, Mt. Hood, and the West Hills



BIKE PARKING



THE POWER OF Location

Within blocks of the Portland Waterfront, Pioneer Square, the Arlene Schnitzer Concert Hall, and the city's best restaurants, hotels and shopping.

WITHIN A 3 BLOCK RADIUS

8 MAX train stops

62 Bus stops

WITHIN A 5 BLOCK RADIUS

175 Restaurants

18 Hotels

TOP 5 ATTRACTIONS within 5 BLOCKS



RESTAURANTS

- 1 Departure
- 2 Fogo de Chao
- 3 Ruth's Chris
- 4 Urban Farmer
- 5 Higgins



COFFEE SHOPS

- 1 Case Study Coffee
- 2 Water Avenue Coffee
- 3 Spella Caffe
- 4 Umbria Cafe
- 5 Less and More Coffee



HOTELS

- 1 The Nines
- 2 Dossier Hotel
- 3 Royal Sonesta Portland
- 4 The Duniway Hotel
- 5 The Heathman Hotel



99
Walk Score



96
Transit Score



94
Bike Score



FOR LEASING
INFORMATION:

Sean Turley
Licensed in Oregon
+1 503 937 2102
sean.turley@jll.com

sixthandmainpdx.com



Jones Lang LaSalle Brokerage, Inc.



©2024 Jones Lang LaSalle IP, Inc. All rights reserved. All information contained herein is from sources deemed reliable; however, no representation or warranty is made to the accuracy thereof.