



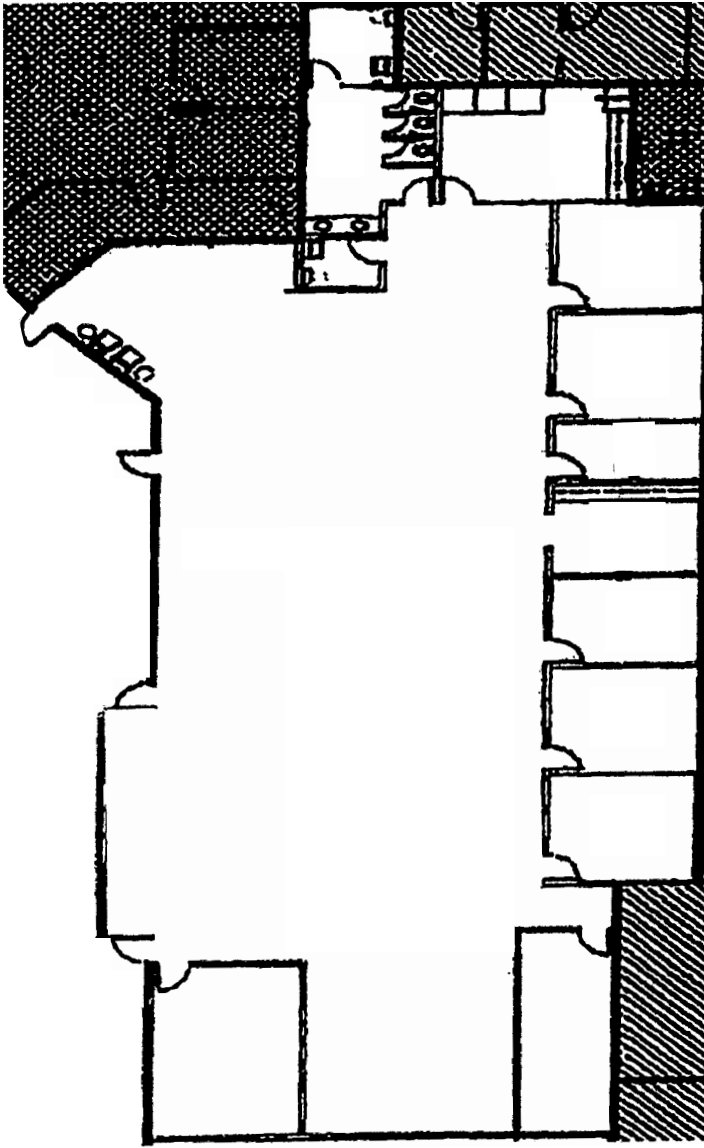
For Sublease

Office space now available

- 6,810 RSF
- Available now
- Flexible lease terms available
- Mostly open office space
- Ample parking available
- \$18.00 FSG

Stonemill Business Park
204 SE Stonemill Drive,
Suite 225
Vancouver, WA 98684

Candace Lounsbury
+1 503 937 2131
candace.lounsbury@am.jll.com
Licensed in OR & WA



Candace Lounsbury
+1 503 937 2131
candace.lounsbury@am.jll.com
Licensed in OR & WA

Jones Lang LaSalle Brokerage, Inc.

©2022 Jones Lang LaSalle IP, Inc. All rights reserved. All information contained herein is from sources deemed reliable; however, no representation or warranty is made to the accuracy thereof.

