



Industrial land assemblage

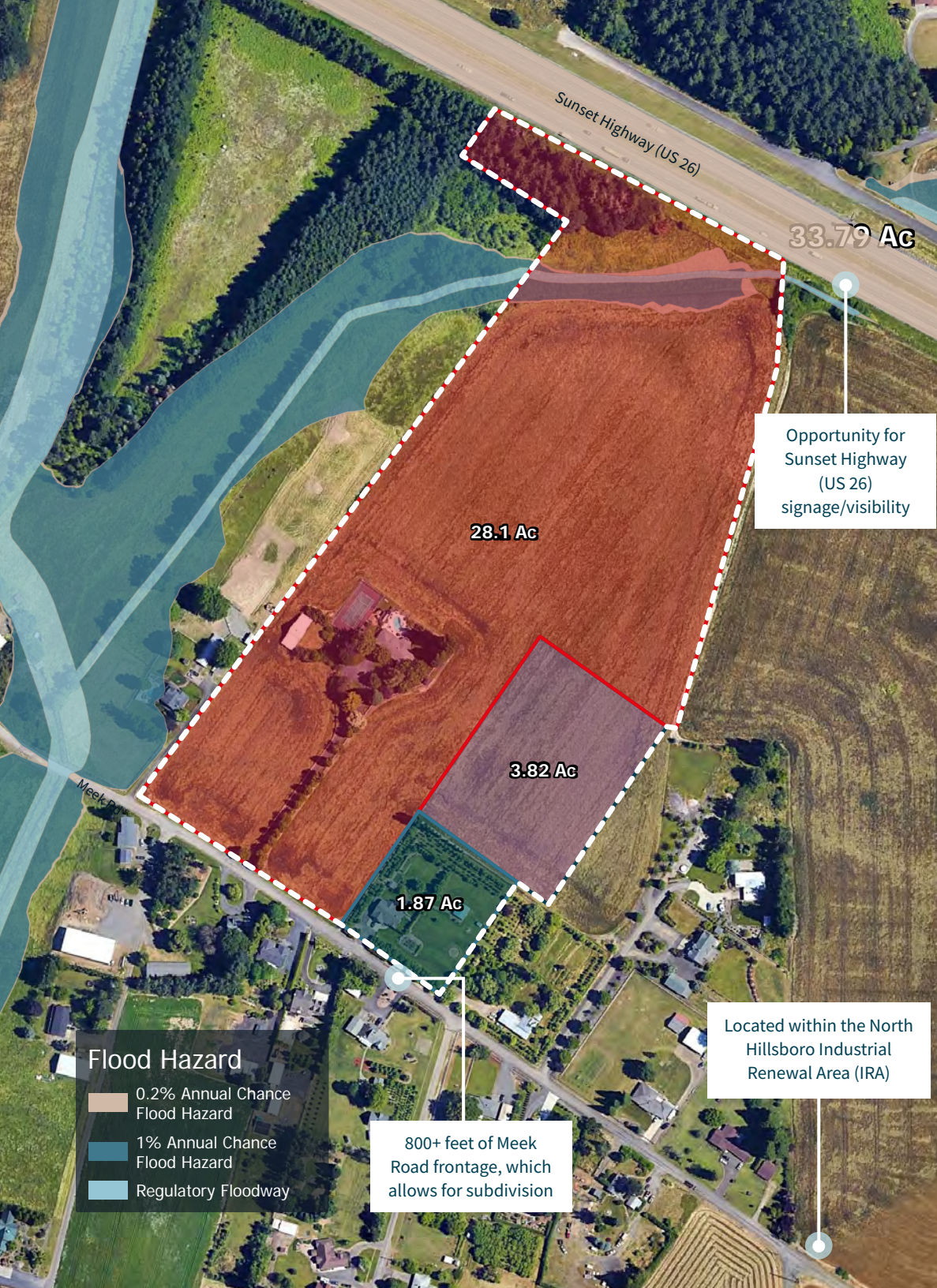
For Sale

33.79 acres

26855 NW Meek Rd and 26975 NW Meek Rd, Hillsboro, OR



Jones Lang LaSalle Brokerage, Inc. License #: CO508577000



Site Information



Location

26855 NW Meek Rd, Hillsboro, OR
26975 NW Meek Rd, Hillsboro, OR



APNs/parcel sizes

R658602 - 28.1 acres,
R658540 - 3.82 acres,
R658568 - 1.87 acres



County

Washington County



Electric utility provider

Portland General Electric (PGE)



Zoning

Industrial Sanctuary
(I-S Zone) City of Hillsboro*



Sub-area

Jackson East-North Sub-Area



Natural gas utility provider

NW Natural



Water/sewer

City of Hillsboro

Hillsboro Industrial District

The Hillsboro Industrial District is home to Intel's Gordon Moore Park at Ronler Acres. Intel and the other companies within the Hillsboro Industrial District employ more than 40,000 people, which accounts for over half of Hillsboro's total employment and 70% of the City's payroll. In addition, 24% of the Portland region's manufacturing employment is in Hillsboro.



For additional information:

Eric Haskins

Licensed in OR
+1 503 972 8611
eric.haskins@jll.com

Conan Lee

Licensed in WA
+1 206 351 0838
conan.lee@jll.com



Although information has been obtained from sources deemed reliable, neither Owner nor JLL makes any guarantees, warranties or representations, express or implied, as to the completeness or accuracy as to the information contained herein. Any projections, opinions, assumptions or estimates used are for example only. There may be differences between projected and actual results, and those differences may be material. The Property may be withdrawn without notice. Neither Owner nor JLL accepts any liability for any loss or damage suffered by any party resulting from reliance on this information. If the recipient of this information has signed a confidentiality agreement regarding this matter, this information is subject to the terms of that agreement. ©2023 Jones Lang LaSalle IP, Inc. All rights reserved.

