



For Sublease

1850 Fairway Dr, San Leandro
1 AC Fenced & secured parking lot
Available January 1, 2025

Thomas Mensendiek
CA Lic# 2001433
t.mensendiek@jll.com
+1 925 300 6348

Eddie Shuai
CA Lic #1454419
Email.Address@jll.com
+1 415 336 3573

REGIONAL ACCESS

Mass Transportation

San Leandro BART	2.1 Miles
Bay Fair BART	3.2 Miles
Oakland BART	5.0 Miles

Major Roads

I-880	0.7 Miles
I-580	4.9 Miles

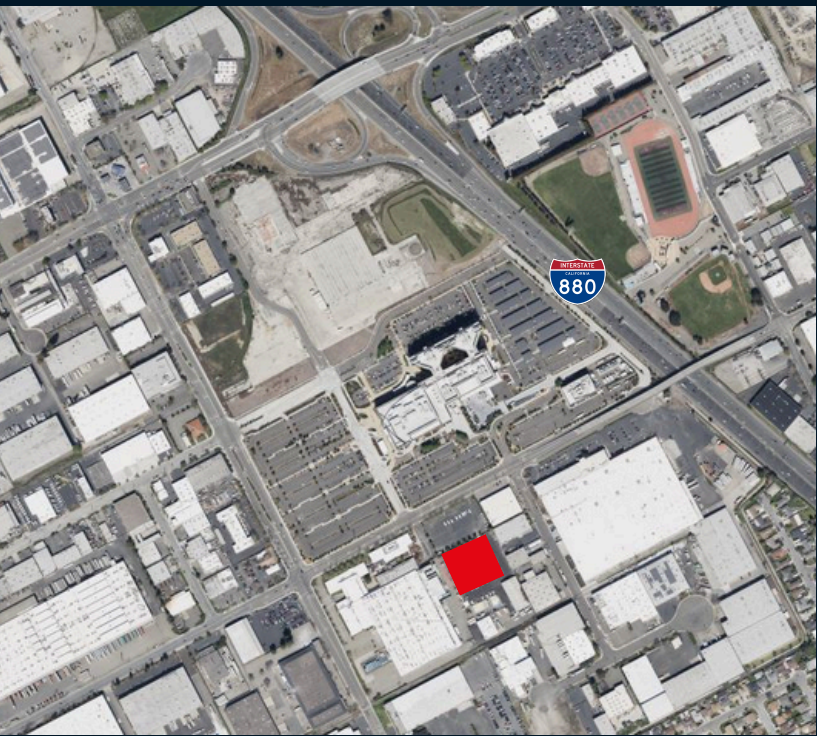
Ports

Oakland	10.1 Miles
San Francisco	21.0 Miles
Richmond	25.5 Miles
Benicia	38.6 Miles

Airports

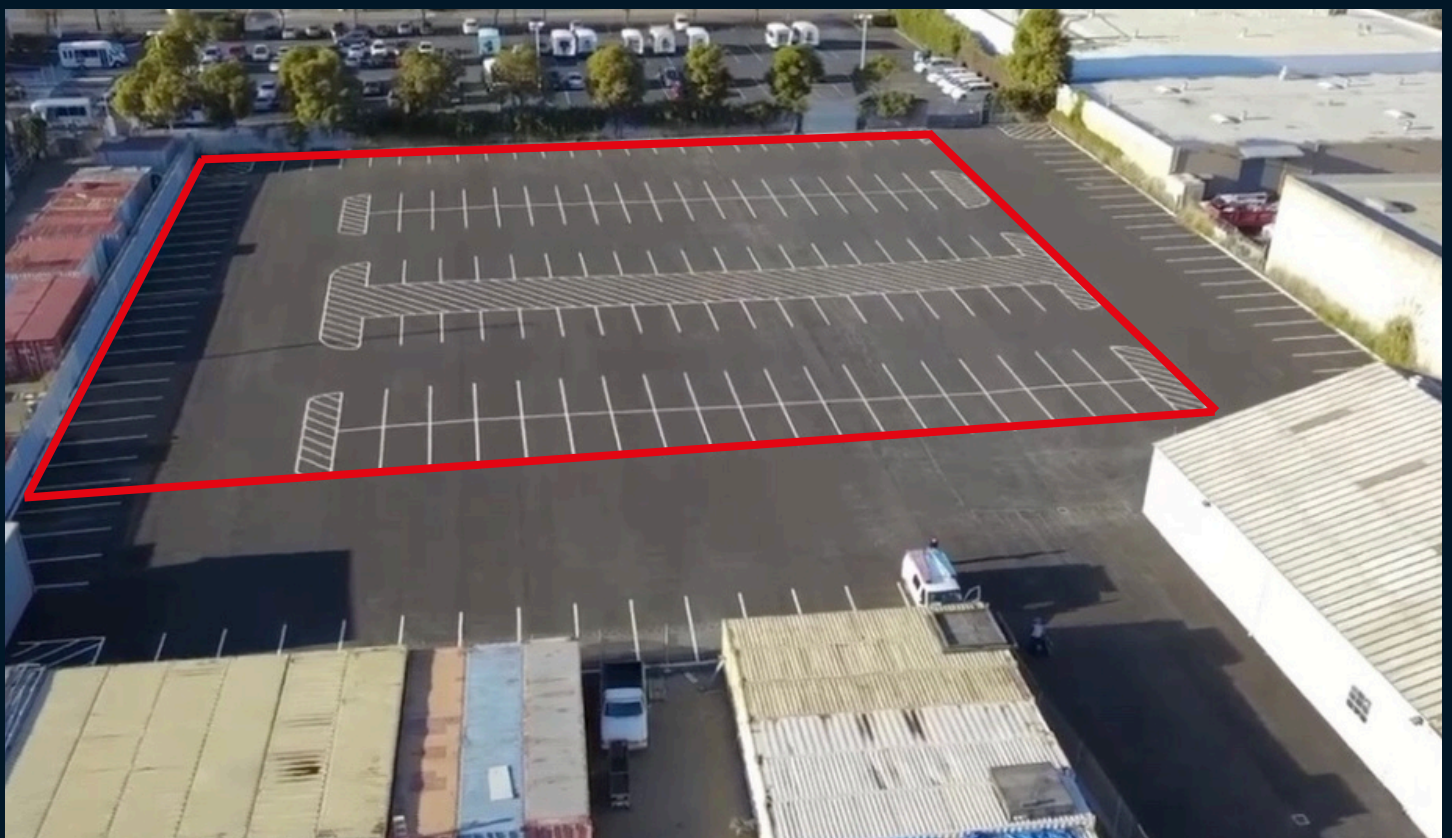
Oakland	4.4 Miles
San Francisco	26.6 Miles
San Jose	29.9 Miles





Sublease

- 1 Acre secured and fenced parking lot
- Available 1/1/2025
- Great Highway access
- Centrally located in San Leandro



Thomas Mensendiek
 CA Lic# 2001433
t.mensendiek@jll.com
 +1 925 300 6348

Eddie Shuai
 CA Lic #1454419
eddie.shuai@jll.com
 +1 415 336 3573



Although information has been obtained from sources deemed reliable, neither Owner nor JLL makes any guarantees, warranties or representations, express or implied, as to the completeness or accuracy as to the information contained herein. Any projections, opinions, assumptions or estimates used are for example only. There may be differences between projected and actual results, and those differences may be material. The Property may be withdrawn without notice. Neither Owner nor JLL accepts any liability for any loss or damage suffered by any party resulting from reliance on this information. If the recipient of this information has signed a confidentiality agreement regarding this matter, this information is subject to the terms of that agreement. ©2024. Jones Lang LaSalle IP, Inc. All rights reserved.