

**5,307 SF RETAIL BUILDING W/ DRIVE-THRU  
AVAILABLE FOR SALE**



**New leases just signed on 1,928 SF  
- cash flow in place!**

# Walmart Supercenter Retail

1217 Diamond Circle  
Lafayette, Colorado 80026



FOR MORE INFORMATION, CONTACT:

**SARAH ALFANO**  
+1 303 263 5362  
[sarah.alfano@jll.com](mailto:sarah.alfano@jll.com)

**JEFF FELDMAN**  
+1 214 564 7188  
[jeff.feldman@jll.com](mailto:jeff.feldman@jll.com)



# Aerial

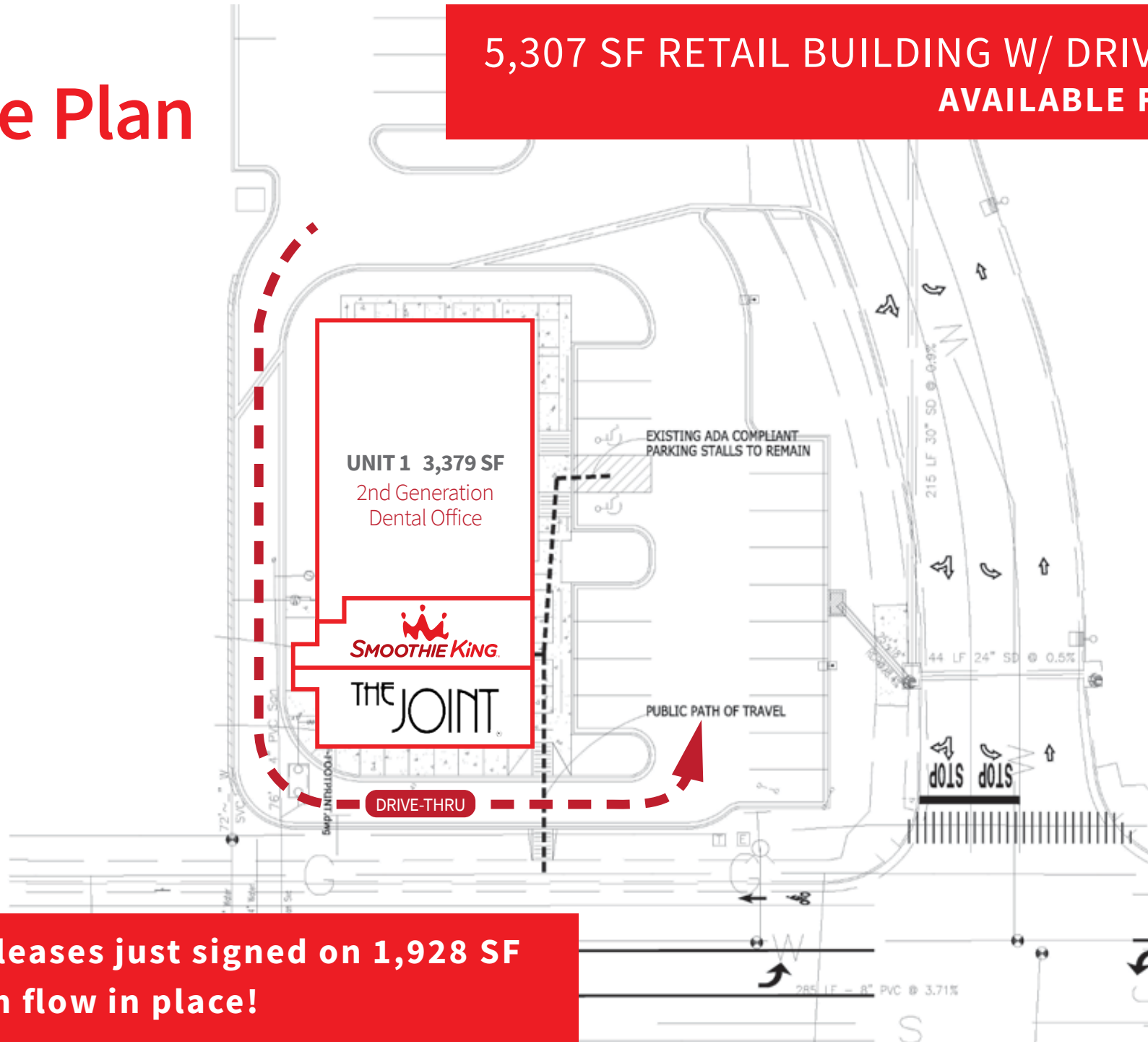
**5,307 SF RETAIL BUILDING W/ DRIVE-THRU  
AVAILABLE FOR SALE**



**New leases just signed on 1,928 SF  
- cash flow in place!**

# Site Plan

5,307 SF RETAIL BUILDING W/ DRIVE-THRU  
AVAILABLE FOR SALE



New leases just signed on 1,928 SF  
- cash flow in place!



# 5,307 SF RETAIL BUILDING W/ DRIVE-THRU AVAILABLE FOR SALE



## Demographics

	1 mile	3 miles	5 miles
<b>POPULATION</b>	10,031	54,548	111,418
<b>HOUSEHOLDS</b>	4,038	21,294	42,457
<b>AVG HOUSEHOLD INCOME</b>	\$140,359	\$149,870	\$164,241
<b>DAYTIME POPULATION</b>	8,973	50,670	99,777

FOR MORE INFORMATION, CONTACT:

**SARAH ALFANO**  
+1 303 263 5362  
[sarah.alfano@jll.com](mailto:sarah.alfano@jll.com)

**JEFF FELDMAN**  
+1 214 564 7188  
[jeff.feldman@jll.com](mailto:jeff.feldman@jll.com)



AGENCY  
DISCLOSURE

Although information has been obtained from sources deemed reliable, JLL does not make any guarantees, warranties or representations, express or implied, as to the completeness or accuracy as to the information contained herein. Any projections, opinions, assumptions or estimates used are for example only. There may be differences between projected and actual results, and those differences may be material. JLL does not accept any liability for any loss or damage suffered by any party resulting from reliance on this information. If the recipient of this information has signed a confidentiality agreement with JLL regarding this matter, this information is subject to the terms of that agreement. ©2023. Jones Lang LaSalle IP, Inc. All rights reserved.