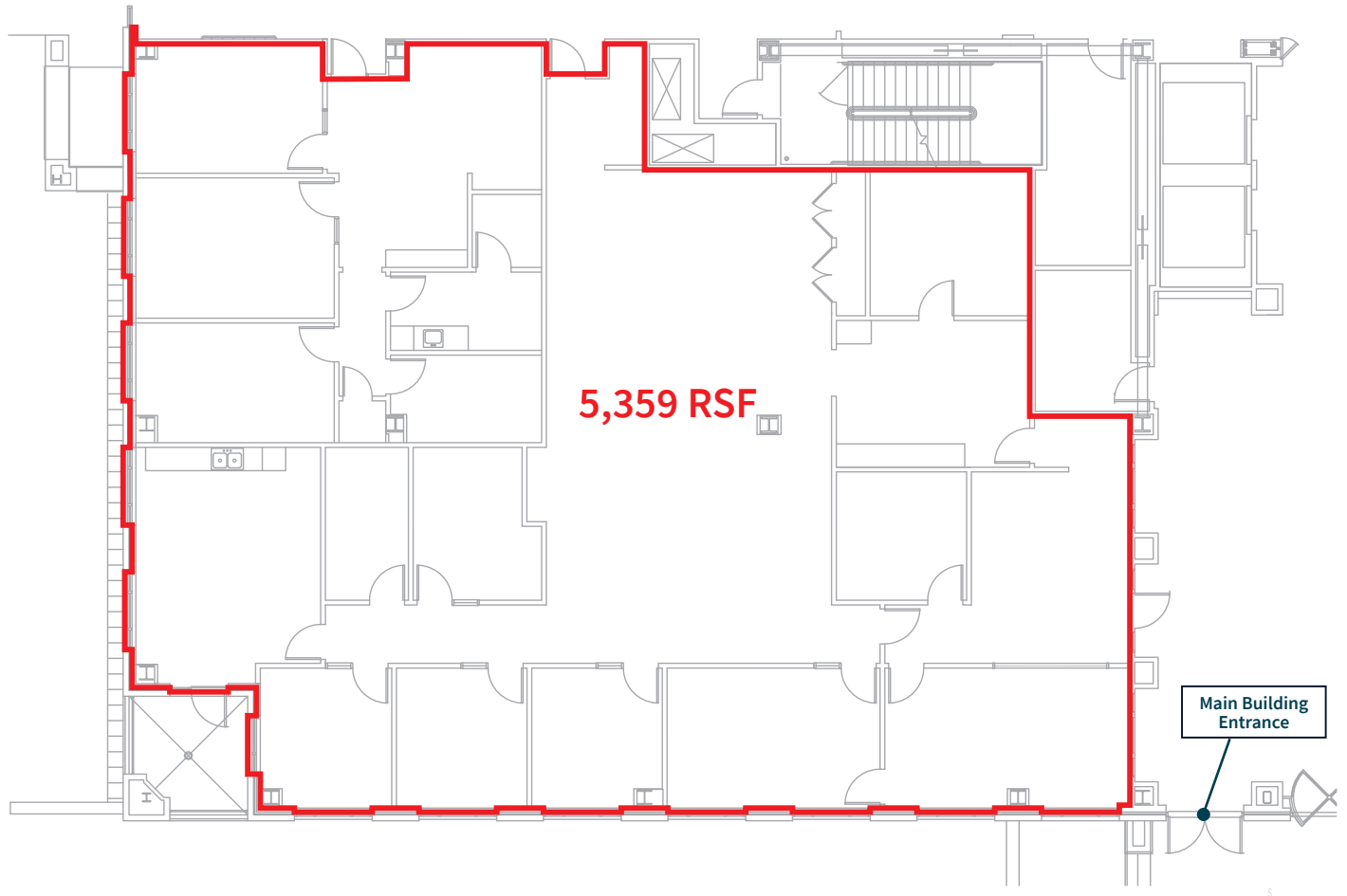
 **JLL** SEE A BRIGHTER WAY

For sublease

1251 NW Briarcliff Pkwy
5,359 RSF Available



Sublease Details

- 5,359 RSF available as of October 1, 2024
- Sublease through August 2027
- Immediately off the lobby of the Northland's most prestigious office building
- Walkable restaurants, hotels, services and shopping at The Village of Briarcliff
- Excellent access to 169 Highway and 9 Highway
- Minutes to downtown
- Motivated sublandlord

Contact:

Jayme Miller
816 261 2006
jayme.miller@jll.com

Larry Glaze, CRE
816 389 4200
larry.glaze@jll.com

1251 NW Briarcliff Pkwy / Kansas City

Space Details

- Large windows provide lots of natural light
- Private patio off breakroom
- 30 person conference center available for use free of charge
- Entertainment space available featuring sweeping views of the downtown skyline
- Covered parking available free of charge



Contact:

Jayne Miller
816 261 2006
jayme.miller@jll.com

Larry Glaze, CRE
816 389 4200
larry.glaze@jll.com

1251 NW Briarcliff Pkwy / Kansas City



Contact:

Jayne Miller
816 261 2006
jayme.miller@jll.com

Larry Glaze, CRE
816 389 4200
larry.glaze@jll.com