



 **JLL** SEE A BRIGHTER WAY

For Sublease

8,444 RSF Available
Through March 2026

Features a private terrace

1221 Post Road E | Westport, CT

Property Overview

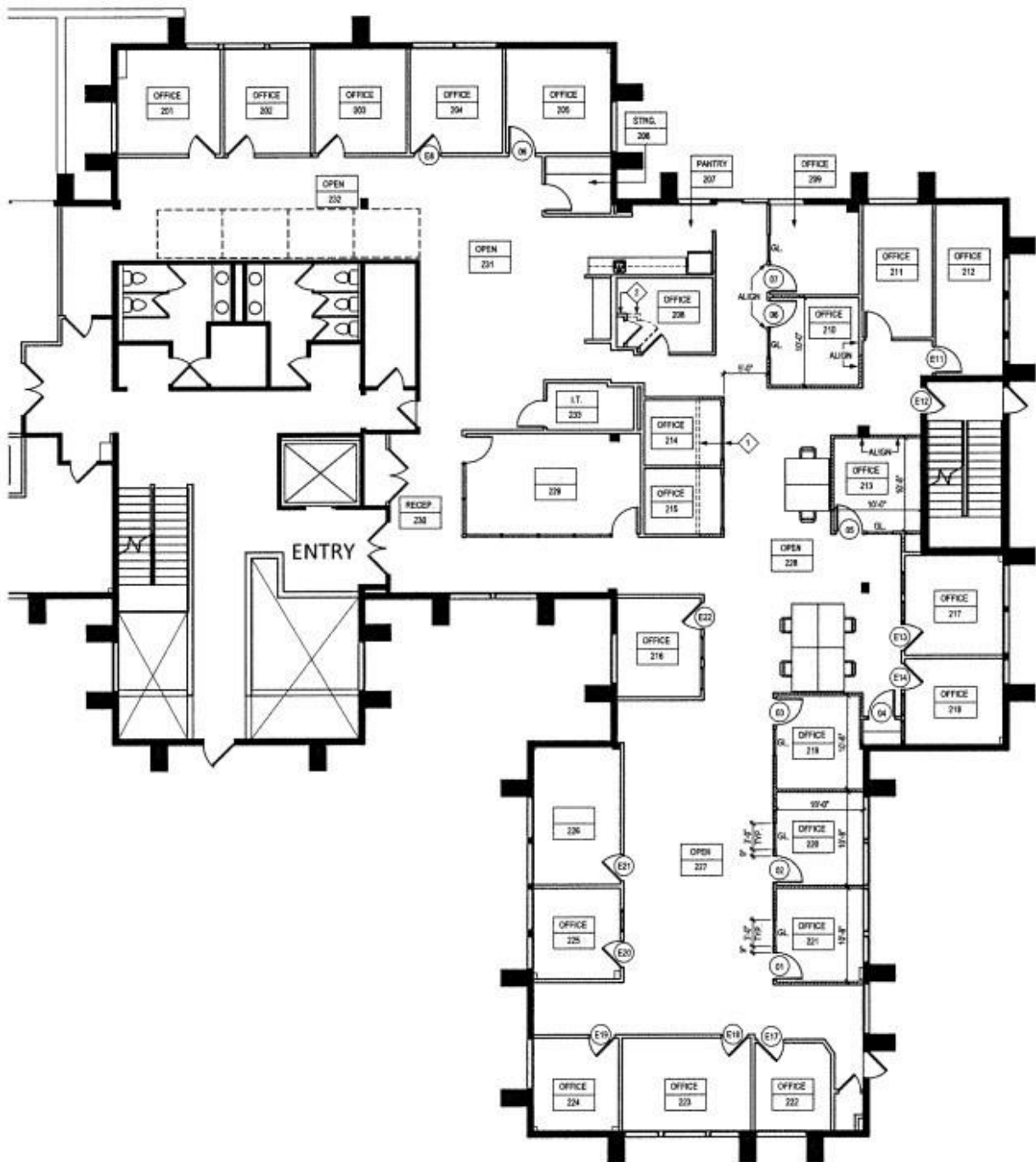
1221 Post Road East is an exceptionally maintained commercial office building situated in Westport, Connecticut. Comprised of three stories, the building spans nearly 64,000 square feet and sits on a beautifully landscaped 2.27-acres.

Features

- Modernized lobby and common areas
- Updated building facade
- Monument signage
- Outdoor patio with seating area
- Ample surface and covered parking
- Natural light throughout



Floorplan



Space Features

- Fully furnished
- Pantry
- Copy room
- Private terrace
- Reception
- Natural light
- Common area restrooms

23

Private Offices

2

Conference Rooms

6

Workstations

1

Pantry



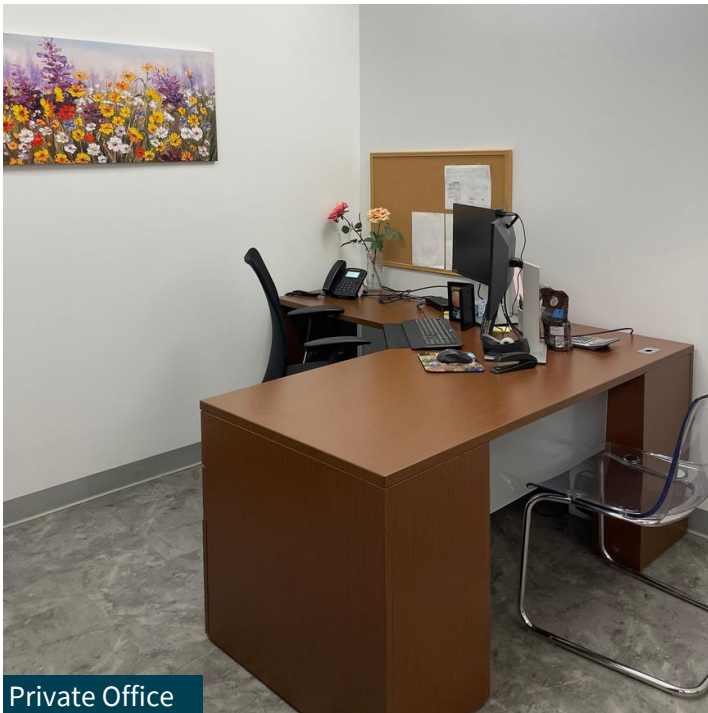
Meeting Room



Open Area



Conference Room



Private Office



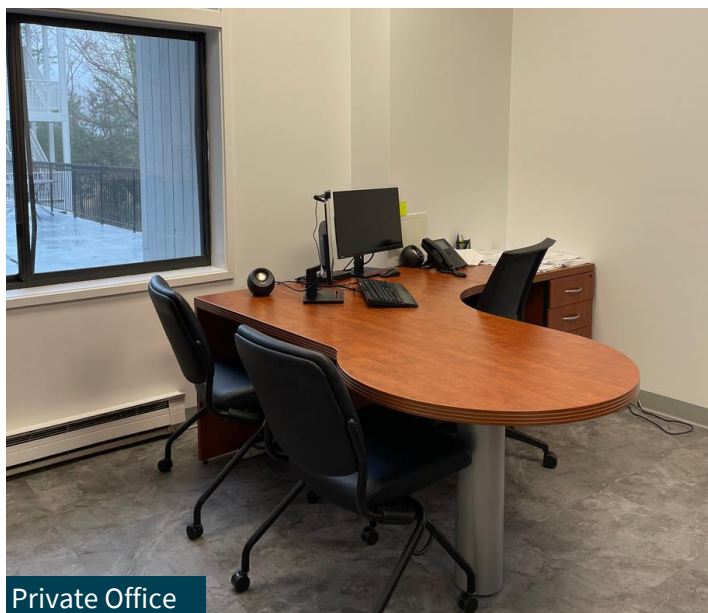
Workstations



Workstations



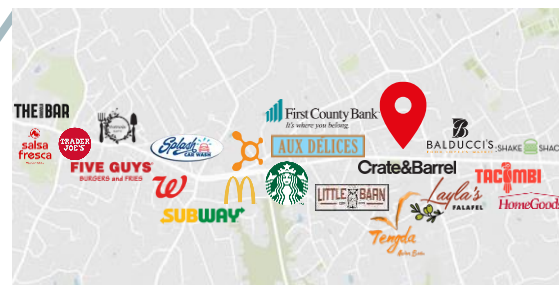
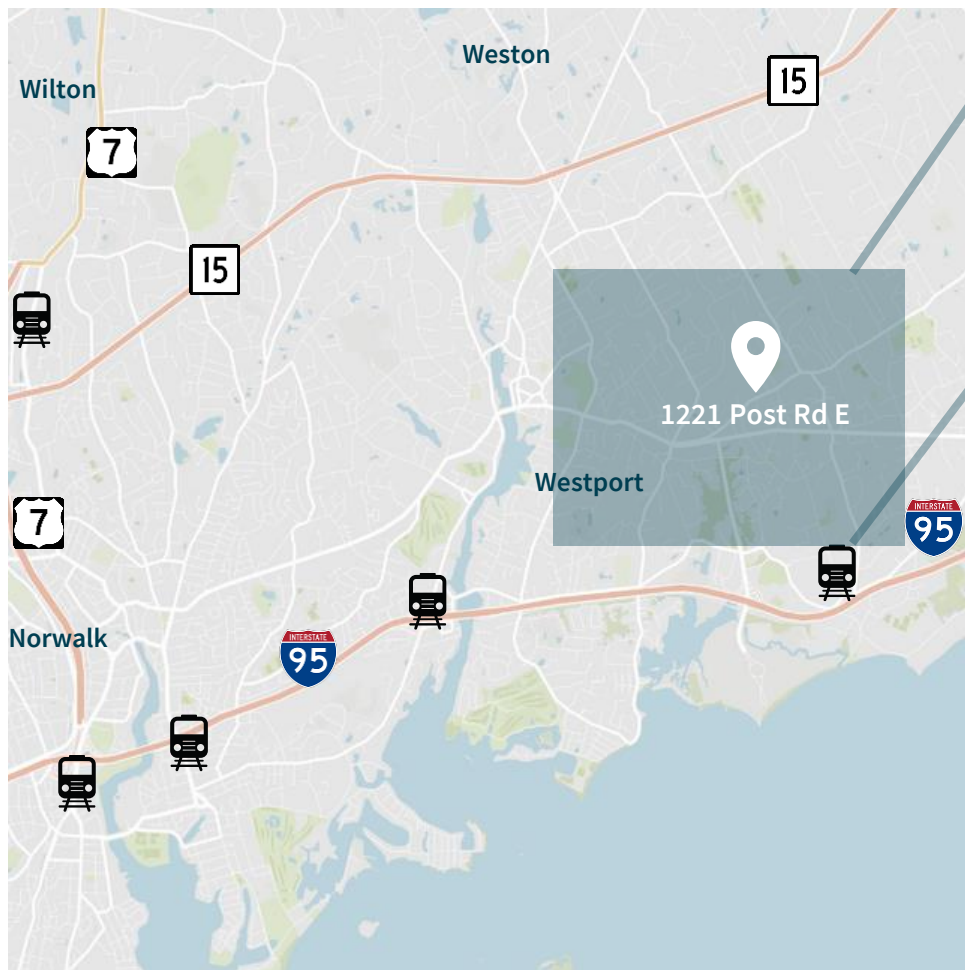
Private Terrace



Private Office



Meeting Room



Location	Drive / Distance
Westport Train Station	8 Minute Drive 4.5 Miles
I-95 Exit 18	4 Minute Drive 1.5 Miles
Merritt Parkway Exit 42	7 Minute Drive 3.2 Miles
Norwalk	10 Minute Drive 6.5 Miles
Stamford	20 Minute Drive 14.7 Miles
Grand Central Station	1 Hour Drive 70 Minute Train



1221

Mark Jacobs

Mark.Jacobs@jll.com

(203) 331 6792

jll.com

Jones Lang LaSalle Brokerage, Inc.