



College & Renner Corporate Center is a 226,000 SF industrial corporate center located one mile south of K-10 / I-435 in Lenexa, KS.

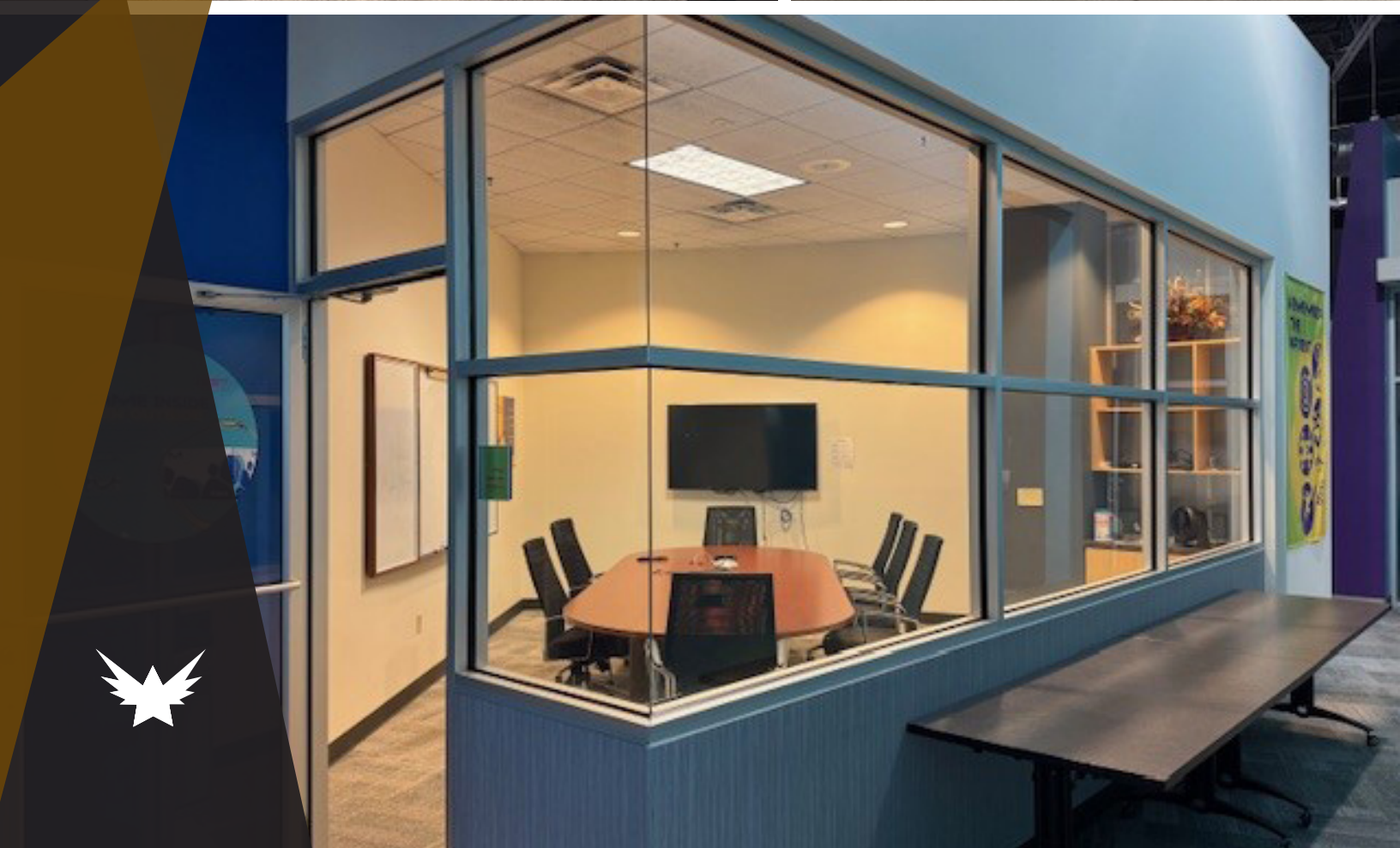


## COLLEGE & RENNER

### CORPORATE CENTER - BUILDING D

**26,552 SF Available For Lease**  
11296 Renner Blvd. | Lenexa, KS





# ABOUT

**Office area:** ±16,079 SF

**Warehouse area:** ±9,632 SF (cooler included in warehouse square footage)

**Cooler area:** ±5,095 SF

**Clear height:** 20'

**Parking ratio:** 2.2+/1,000 SF

**Dock doors:** 6

**Drive-in doors:** 2

**Power:** Significant power and fiber optics available

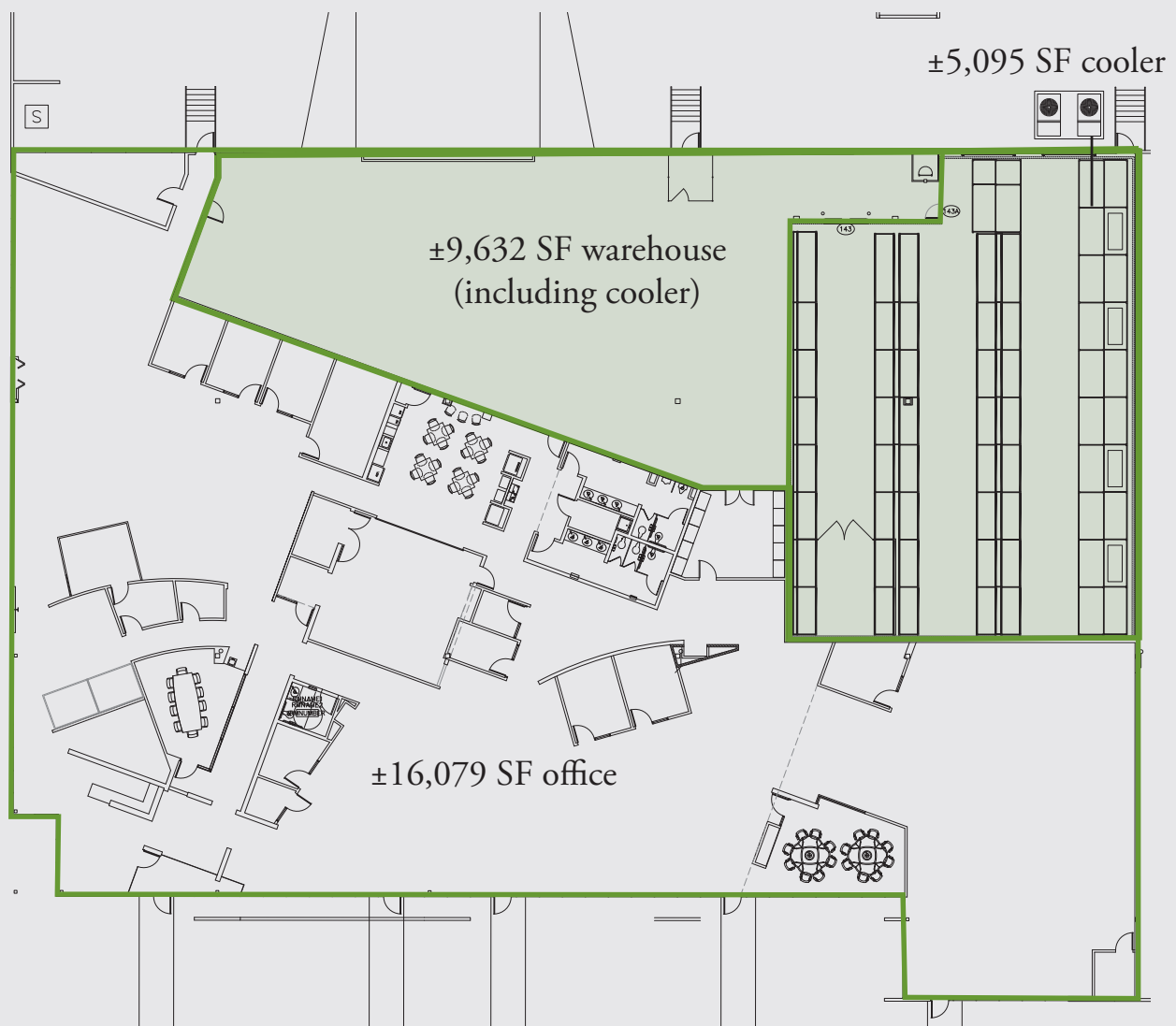
**Building exteriors:** Heavy exposed aggregated precast concrete panels with extensive 9' and 12' glass lines

**Access:** Immediate access to K-10 and I-435, via Renner Boulevard, and I-35, via Renner Boulevard and 119th Street

**Location:** Conveniently located at the southwest corner of College Boulevard and Renner Boulevard with abundant services nearby

**2024 Operating Expenses:**

- Real Estate Taxes: \$3.53/SF
- Insurance: \$0.43/SF
- CAM: \$3.09/SF







10

K-10 & Renner Interchange

Four Way Interchange  
127,500 VPD

C&R Bldg. D  
11296 Renner Blvd.

Lackman Rd.

College Blvd.

Renner Blvd.

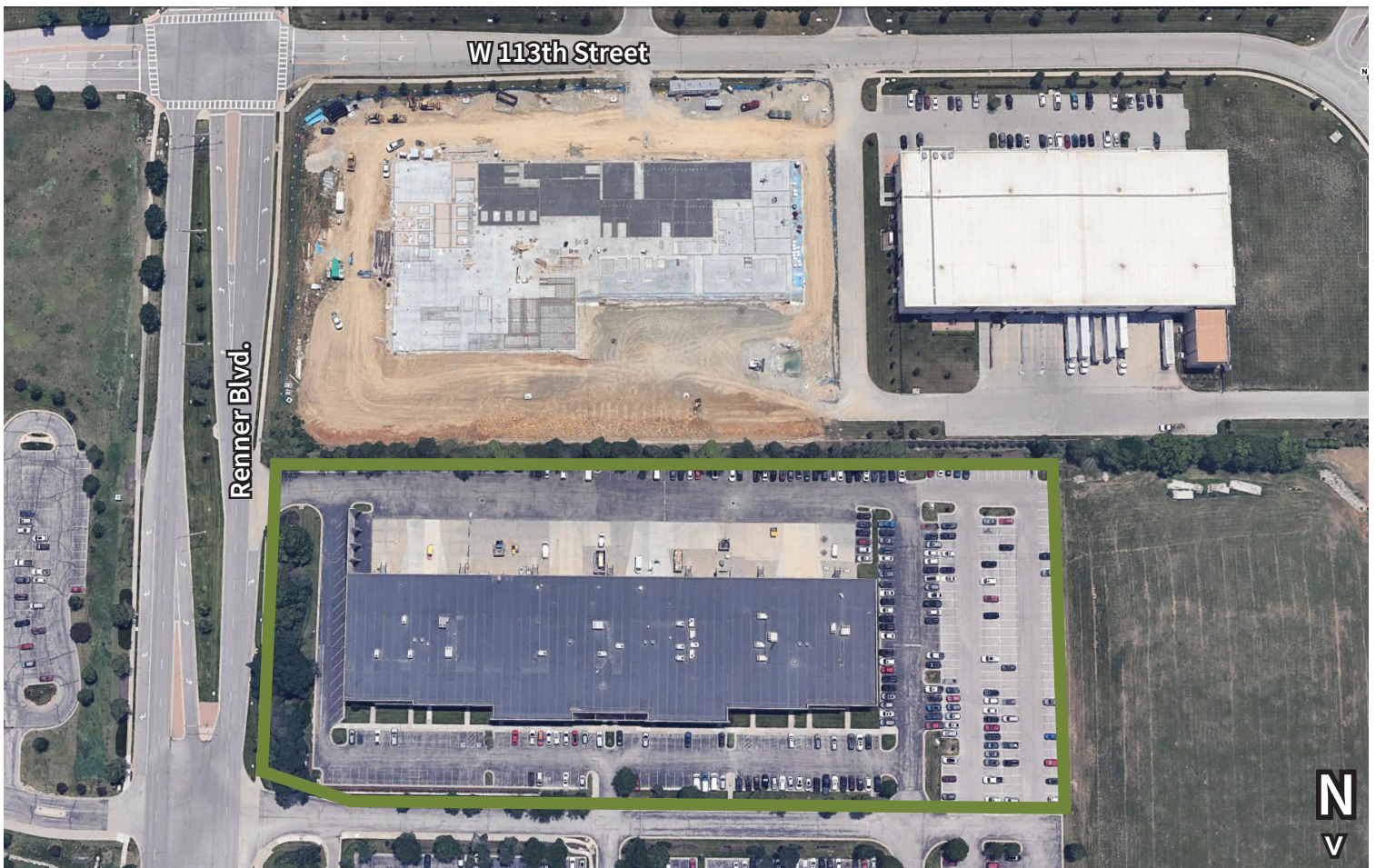
Pflumm Rd.

I-35 & 119th St.  
Interchange

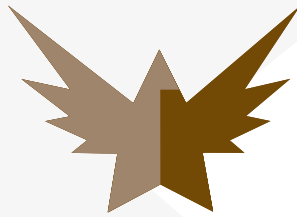
W 119th Street











WHERE INSTITUTIONAL CAPABILITY MEETS  
ENTREPRENEURIAL AGILITY

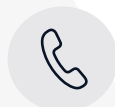
SparrowHawk offers tenants and brokers speed, creativity and flexibility. Both benefit from a hands-on management philosophy rooted in local-market knowledge, transparency, experience and integrity.

Tenants and brokers are assured timely, straightforward answers and SparrowHawk values that enhance the leasing experience for the benefit of tenants and brokers and assures that each reach new heights.

*[sparrowhawkre.com](http://sparrowhawkre.com)*



**Contact**  
Kevin Wilkerson  
Phil Algrim



**Telephone**  
+1 913 469 4601  
+1 913 469 4605



**E-mail**  
[kevin.wilkerson@jll.com](mailto:kevin.wilkerson@jll.com)  
[phil.algrim@jll.com](mailto:phil.algrim@jll.com)