



Sunrise Pointe Plaza

970 Sunrise Ave, Roseville, CA 95661

Spaces remaining: 1,200 SF

Jones Lang LaSalle Brokerage, Inc. Real Estate License #: 01856260



Site plan



Property highlights

- Recently remodeled center
- The plaza is located at the hard corner of Sunrise Ave & Cirby Way. Sunrise Ave/Blvd is a main north-south commuter & retail arterial
- Monument signage available (2 monument signs at property)
- Newly constructed 210,000 SF Kaiser medical building within 0.5 miles of Sunrise Pointe & Interstate 80 within 1 mile of the property

Traffic counts

(Source: City of Roseville)

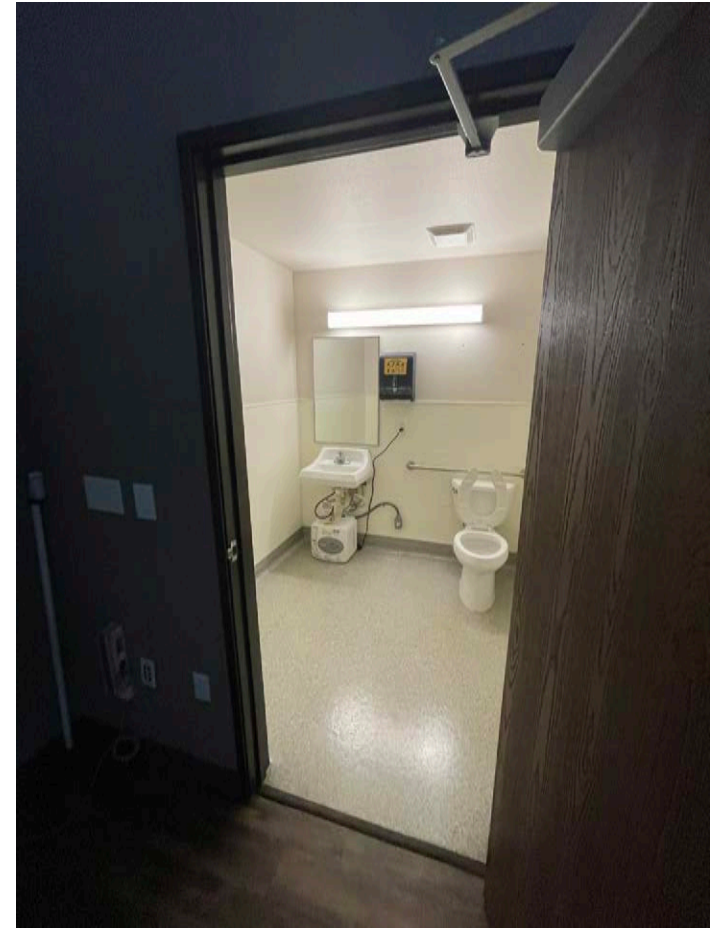
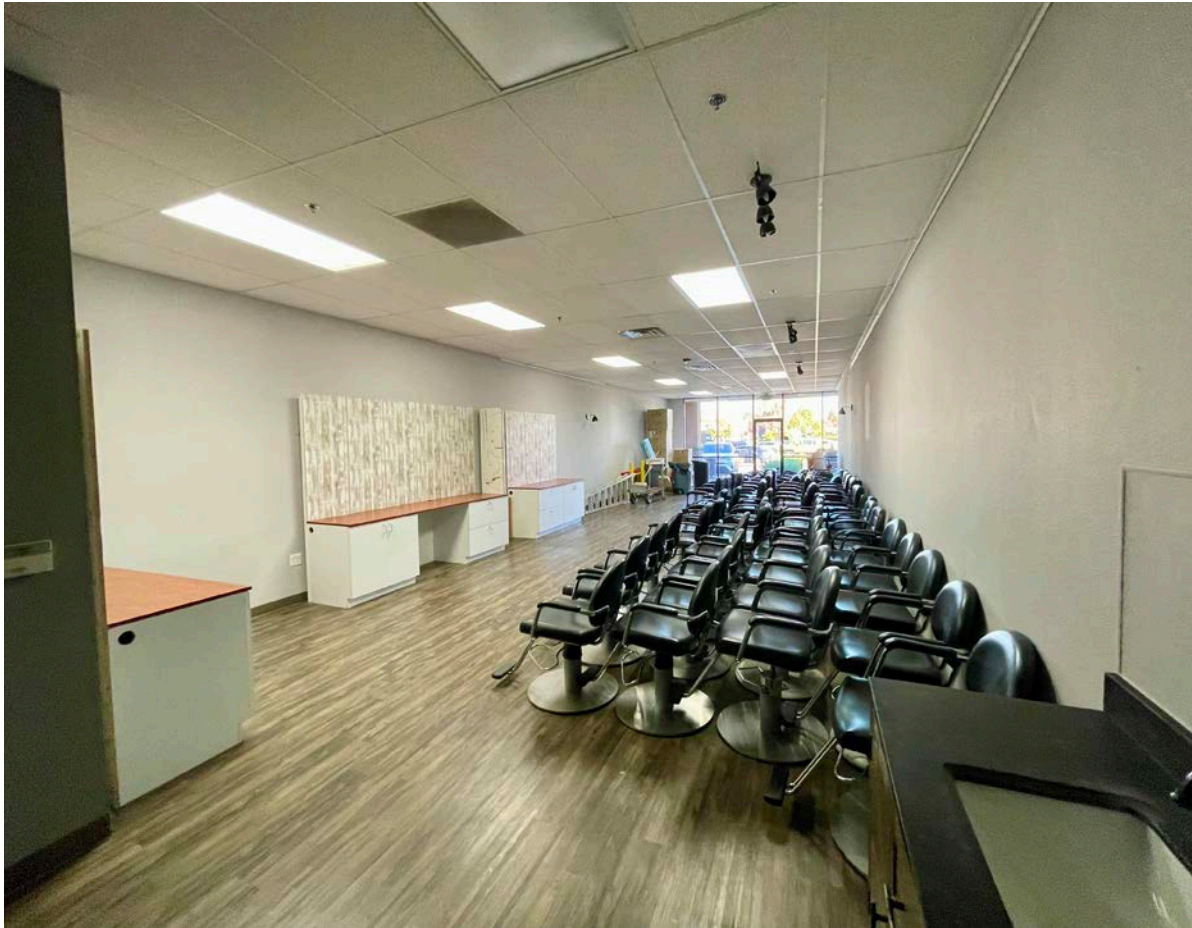
	ADT
Sunrise Ave (north of Cirby Way, 2017)	40,275
Cirby Way (west of Sunrise Avenue, 2017)	36,082

Tenants in immediate vicinity



	1.5 Miles	3 Miles	5 Miles
Population	44,431	150,722	366,075
Average HH income	\$99,115	\$104,176	\$99,872
Daytime population	44,741	163,746	411,739

Interior photos Suite 140



Aerial





Sunrise Pointe Plaza

970 Sunrise Ave, Roseville, CA 95661

Dave White

Vice President, Retail
+1 916 440 1831
dave.white@jll.com
RE License #01759894

John Brecher

Vice President, Retail
+1 916 440 1826
john.brecher@jll.com
RE License #01897931

Torren Ragan

Senior Associate, Retail
+1 916 440 1827
torren.ragan@jll.com
RE License #02046828

Although information has been obtained from sources deemed reliable, neither Owner nor JLL makes any guarantees, warranties or representations, express or implied, as to the completeness or accuracy as to the information contained herein. Any projections, opinions, assumptions or estimates used are for example only. There may be differences between projected and actual results, and those differences may be material. The Property may be withdrawn without notice. Neither Owner nor JLL accepts any liability for any loss or damage suffered by any party resulting from reliance on this information. If the recipient of this information has signed a confidentiality agreement regarding this matter, this information is subject to the terms of that agreement. ©2023. Jones Lang LaSalle IP, Inc. All rights reserved.

