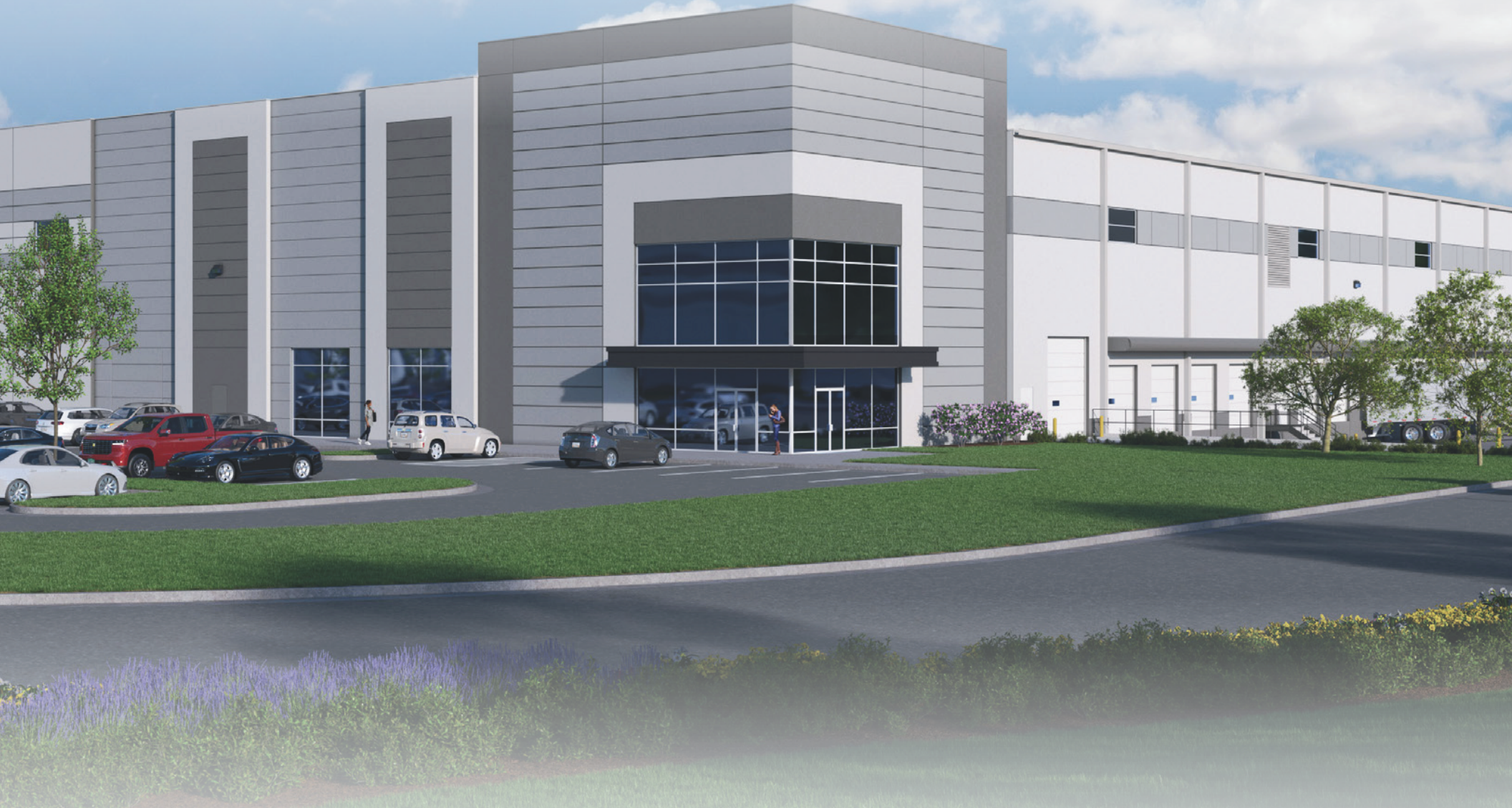


RailPort Logistics Mobile

Class A Warehouse/Distribution Buildings - All Rail-Served

Theodore, AL 36619



Site Overview

Building 1

Available SF: 342,000
Bldg Dimensions: 360' x 950'
Clear Height: 32'- 40'
Column Spacing: 50' x 50'
Loading Docks: 54
Drive Ins: 2
Trailer Parking: 173
Auto Parking: 144

Building 2

Available SF: 208,000
Bldg Dimensions: 800' x 260'
Clear Height: 32'- 40'
Column Spacing: 50' x 50'
Loading Docks: 48
Drive Ins: 2
Trailer Parking: 66
Auto Parking: 292

Building 3

Available SF: 195,000
Bldg Dimensions: 750' x 260'
Clear Height: 32'- 40'
Column Spacing: 50' x 50'
Loading Docks: 40
Drive Ins: 2
Trailer Parking: 66
Auto Parking: 247

Building 4

Available SF: 513,000
Bldg Dimensions: 570' x 900'
Clear Height: 32'- 40'
Column Spacing: 50' x 50'
Loading Docks: 105
Drive Ins: 4
Trailer Parking: 140
Auto Parking: 470

Building 5

Available SF: 168,000
Bldg Dimensions: 800' x 210'
Clear Height: 32'- 40'
Column Spacing: 50' x 50'
Loading Docks: 44
Drive Ins: 2
Trailer Parking: 58
Auto Parking: 262

Building 6

Available SF: 157,500
Bldg Dimensions: 750' x 210'
Clear Height: 32'- 40'
Column Spacing: 50' x 50'
Loading Docks: 41
Drive Ins: 2
Trailer Parking: 67
Auto Parking: 281

Building 7

Available SF: 111,300
Bldg Dimensions: 530' x 210'
Clear Height: 32'- 40'
Column Spacing: 50' x 50'
Loading Docks: 26
Drive Ins: 2
Trailer Parking: 41
Auto Parking: 280

Building 8

Available SF: 250,800
Bldg Dimensions: 570' x 440'
Clear Height: 32'- 40'
Column Spacing: 50' x 50'
Loading Docks: 57
Drive Ins: 4
Trailer Parking: 82
Auto Parking: 261

Building 9

Available SF: 213,400
Bldg Dimensions: 485' x 440'
Clear Height: 32'- 40'
Column Spacing: 50' x 50'
Loading Docks: 45
Drive Ins: 4
Trailer Parking: 102
Auto Parking: 167

Building 10

Available SF: 930,000
Bldg Dimensions: 620' x 1500'
Clear Height: 32'- 40'
Column Spacing: 50' x 50'
Loading Docks: 184
Drive Ins: 4
Trailer Parking: 231
Auto Parking: 392

Building 11

Available SF: 470,000
Bldg Dimensions: 470' x 1000'
Clear Height: 32'- 40'
Column Spacing: 50' x 50'
Loading Docks: 57
Drive Ins: 2
Trailer Parking: 75
Auto Parking: 392

Building 12

Available SF: 310,000
Bldg Dimensions: 310' x 1000'
Clear Height: 32'- 40'
Column Spacing: 50' x 50'
Loading Docks: 56
Drive Ins: 2
Trailer Parking: 72
Auto Parking: 212

Building 13

Available SF: 143,000
Bldg Dimensions: 260' x 550'
Clear Height: 32'- 40'
Column Spacing: 50' x 50'
Loading Docks: 26
Drive Ins: 2
Trailer Parking: 37
Auto Parking: 48

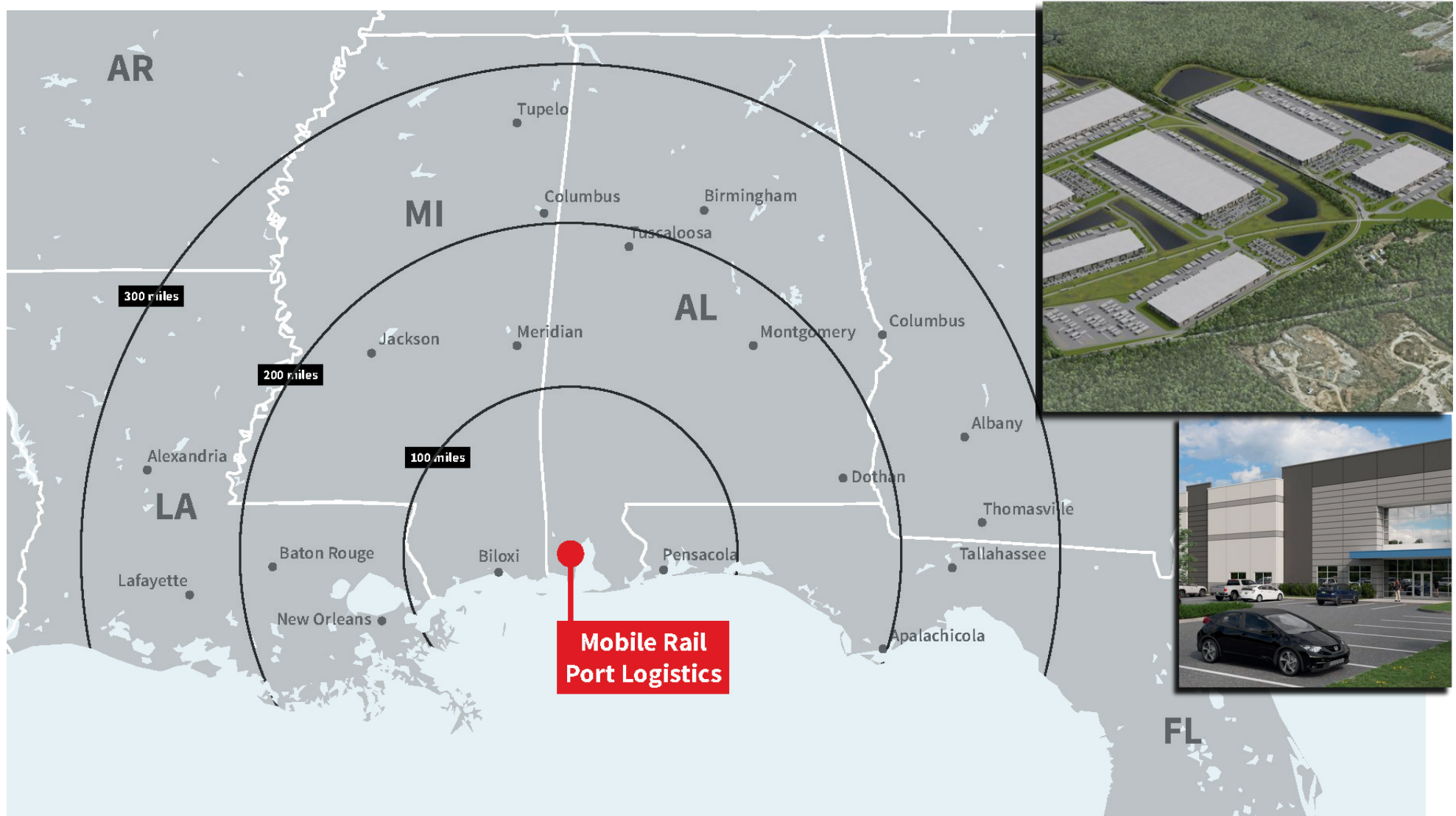
RailPort Logistics Mobile is a class A, state-of-the-art distribution center in Theodore, AL. The park offers up to 5 million SF of industrial space with clear heights ranging from 32'-40'. All buildings are CSX rail-served with Phase I delivering in 2025.



Location Advantages



Superior Connectivity



CONTACT:

Allen Garstecki

251.610.2374

Allen.Garstecki@jll.com



Although information has been obtained from sources deemed reliable, neither Owner nor JLL makes any guarantees, warranties or representations, express or implied, as to the completeness or accuracy as to the information contained herein. Any projections, opinions, assumptions or estimates used are for example only. There may be differences between projected and actual results, and those differences may be material. The Property may be withdrawn without notice. Neither Owner nor JLL accepts any liability for any loss or damage suffered by any party resulting from reliance on this information. If the recipient of this information has signed a confidentiality agreement regarding this matter, this information is subject to the terms of that agreement. © 2023 Jones Lang LaSalle IP, Inc. All rights reserved.