

For Lease

746,420 SF Available

Southport Logistics Center | Building 1
1900 Southport Pkwy. Wilmer, TX 75141

Site Strengths

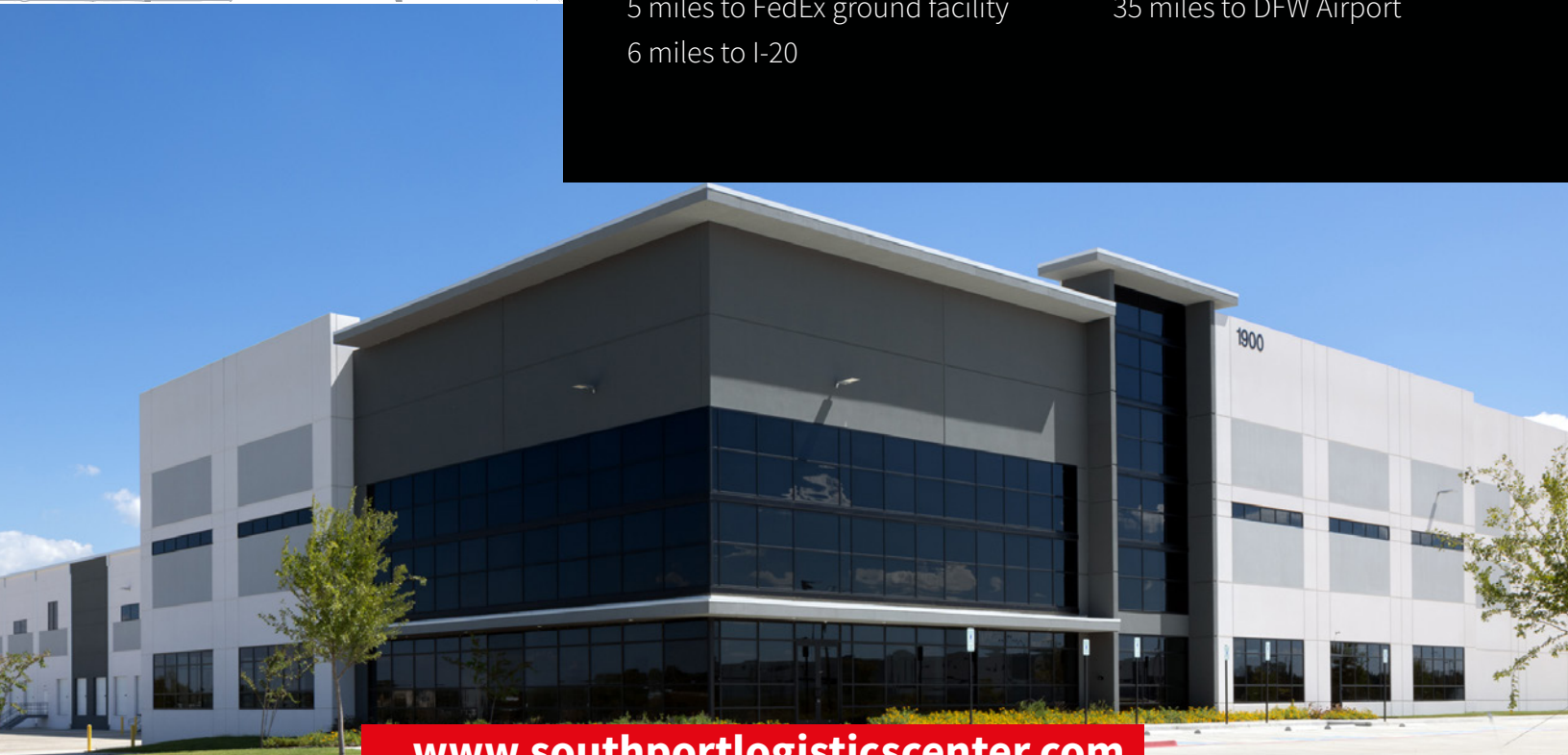
Master planned class A park
Direct access to I-45
Triple freeport tax exemption

Full circulation lanes
Ability to secure truck courts

Excellent Access

2 miles to UP Intermodal Terminal
5 miles to FedEx ground facility
6 miles to I-20

15 miles to Dallas CBD
35 miles to DFW Airport



www.southportlogisticscenter.com



Jones Lang LaSalle Brokerage, Inc.

A Property Of:





For Lease

746,420 SF Available

Southport Logistics Center | Building 1
1900 Southport Pkwy. Wilmer, TX 75141

Property Highlights

746,420 SF available

3,534 SF Spec Office

40' Clear Height

56' x 50' Columns

60' Loading Bay

121 Dock Doors

4 Drive-In Doors

185' Truck Courts

389 Car Parks

170 Trailer Parks

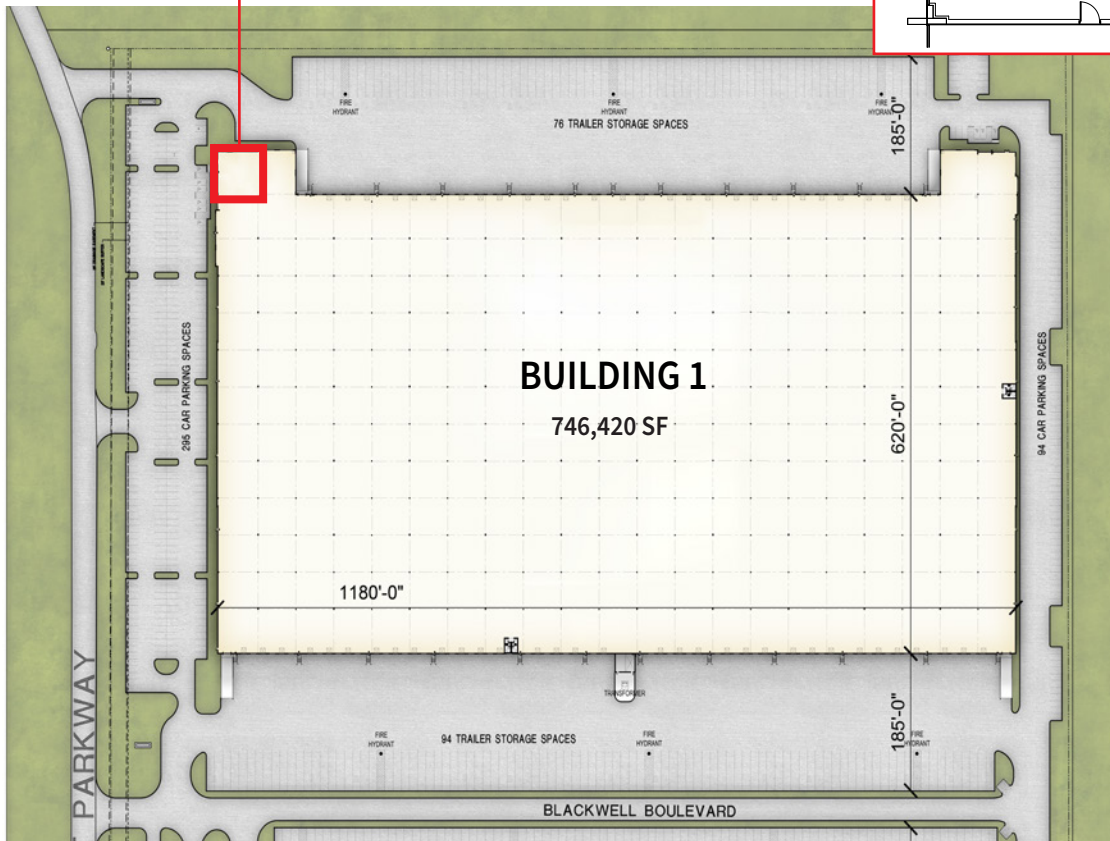
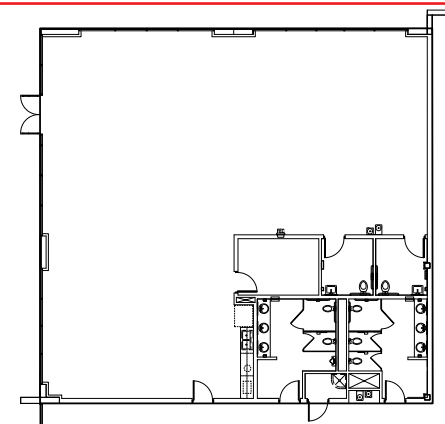
Cross Dock Configuration

Queuing lane with guard shack capabilities

620' Building Depth

Fully Secured Truck Court

3,534 SF Spec Office



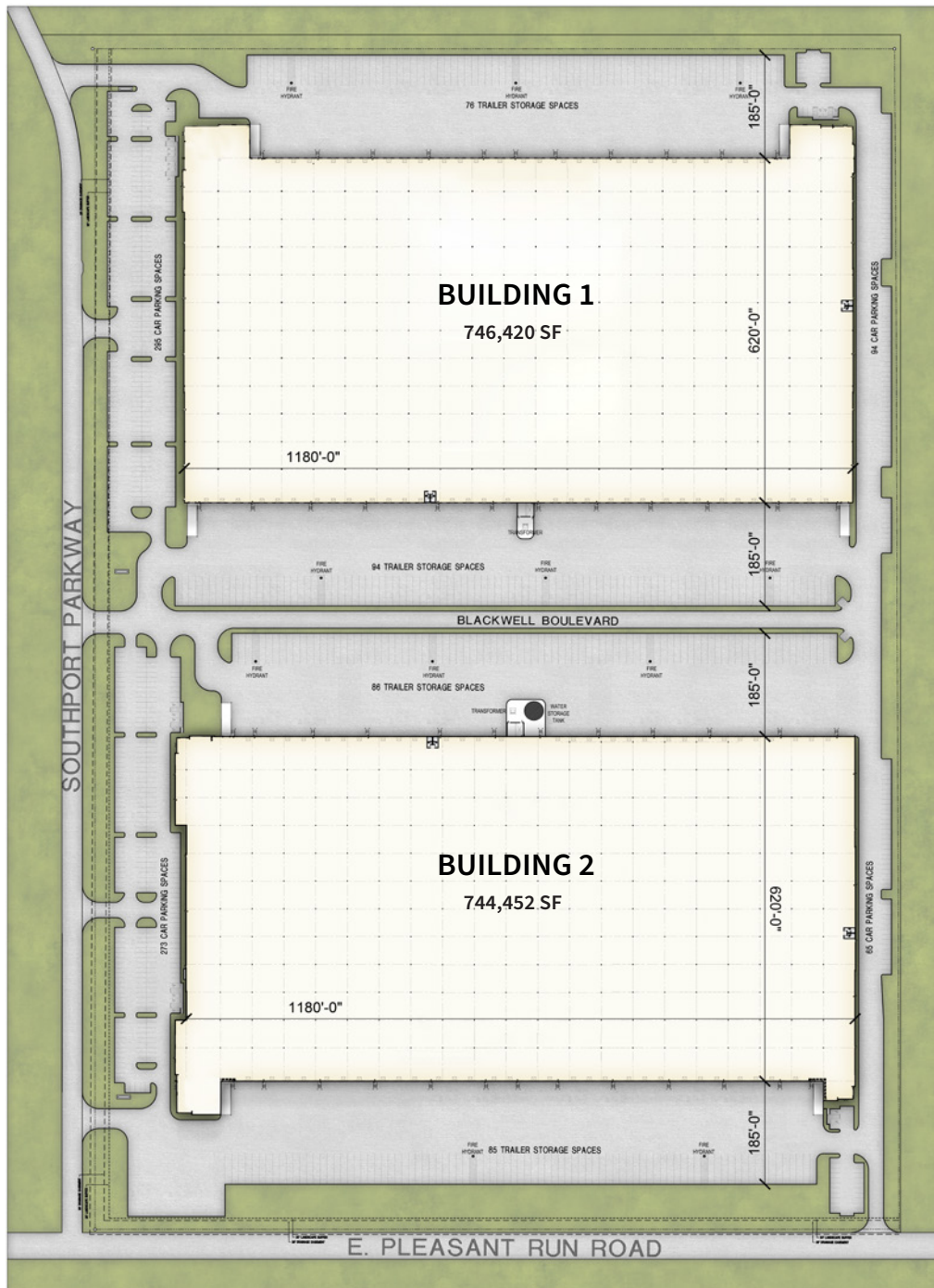


For Lease

746,420 SF Available

Southport Logistics Center | Building 1
1900 Southport Pkwy. Wilmer, TX 75141

Site Plan



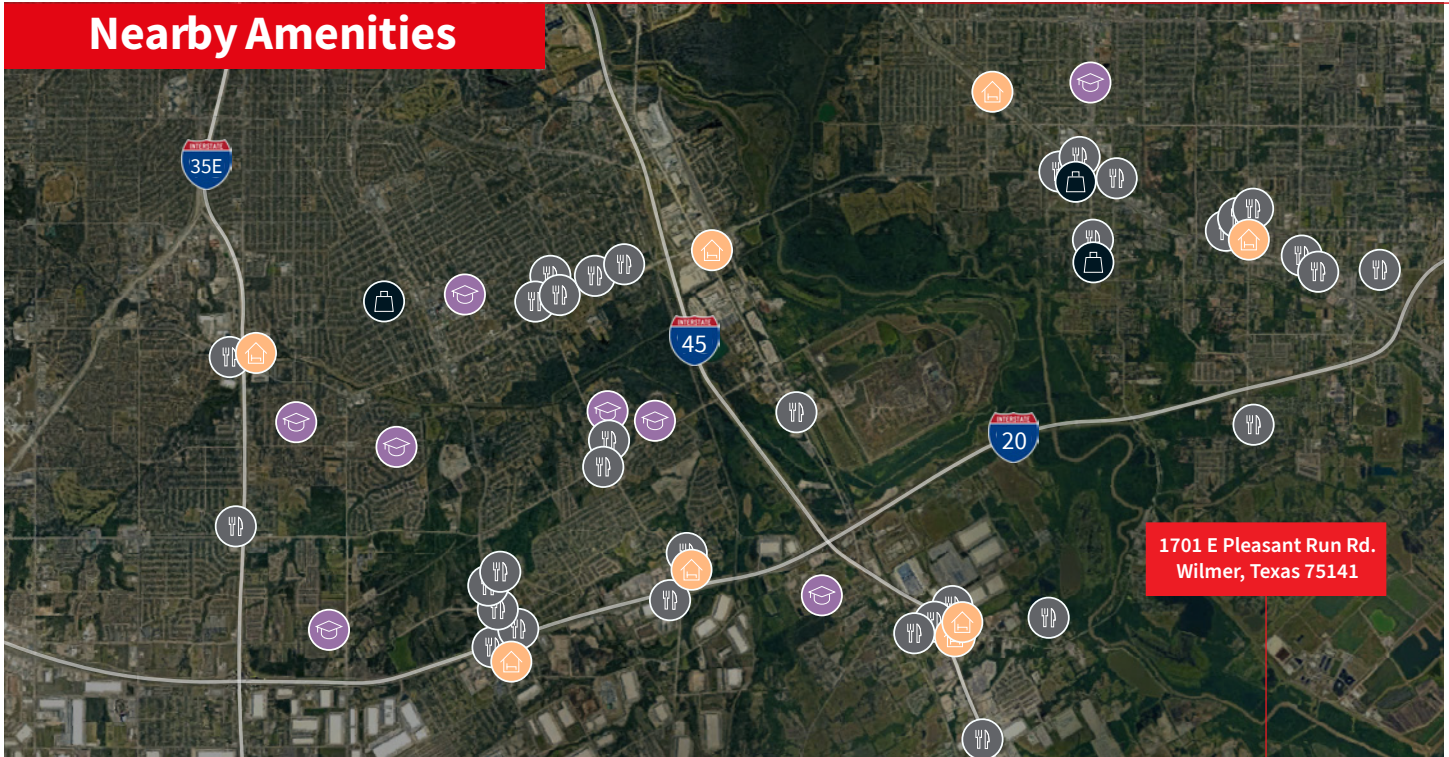


For Lease

746,420 SF Available

Southport Logistics Center | Building 1
1900 Southport Pkwy. Wilmer, TX 75141

Nearby Amenities



Education

- Dallas College Cedar Valley Campus
- Dallas College Pleasant Grove Center
- Gateway Charter Academy
- Paul Quinn College

Lodging

- Days Inn & Suites
- Days Inn
- Express Inn
- Best Western
- Hampton Inn & Suites
- La Quinta Inn & Suites
- La Quinta Inn & Suites
- Luxury Inn Motel
- Motel 6
- Red Crown Inn
- Romantic Inn & Suites

Shopping Centers & Grocery

- Hilda's Grocery
- Hunt's Food Store/Price Busters
- Lancaster Plaza
- Midway Centre
- Pleasant Run Shopping Center
- Save Way Food Store
- The Crossing Shopping Center
- Walmart Neighborhood Market
- Walmart Supercenter

Dining

- Asaderos
- Barbacoa Agave Hidalguense Restaurant
- Burger King
- Camaron
- Casserole Soul Cafe
- China Wok
- Church's Texas Chicken
- Cicis Pizza
- Crazy Brothers Breakfast
- D'Ventures Restaurant & Club
- Dairy Queen
- Dinos Billards
- El Dorado Cafe
- GatorPit BarBQ
- Good Luck Drive In
- Gorditas Estilo Durango
- Hickory House
- Hutchins Donuts
- IHOP
- In-N-Out Burger
- J & S Catfish
- Jack in the Box
- Jamaica Mi Hungry
- KFC
- Kikk
- Louisiana Catfish
- McDonald's
- Motor Lay
- Mr T's Real Catfish & Burgers

- Neon Cowboy
- On The Border Mexican Grill & Cantina
- Outback Steakhouse
- Phat Matt's
- Popeyes Louisiana Kitchen
- PT'S Fried Chicken & Fish
- Roma's Italian Lancaster
- Sonic Drive-In
- Soulmans Bar-B-Que
- Sweet Georgia Brown
- Taco Bell
- Taqueria El Abuelito
- Taqueria El Arquito
- Taqueria Lancaster
- Texas Rose Restaurant & Club
- Texas Tacos
- The Grill
- Whataburger
- Williams Chicken

Loop 9 Under Construction

Estimated Completion Q3 2024





For Lease

746,420 SF Available

Southport Logistics Center | Building 1
1900 Southport Pkwy. Wilmer, Texas 75141

Corporate Neighbors



Kurt Griffin

Senior Managing Director
+1 214 438 6372
kurt.griffin@jll.com

Nathan Orbin

Senior Managing Director
+1 214 438 1649
nathan.orbin@jll.com

Dalton Knipe

Senior Associate
+1 214 438 6195
dalton.knipe@jll.com

Weston King

Associate
+1 214 438 6193
weston.king@jll.com

2401 Cedar Springs Rd, Suite 100
Dallas, TX 75201
+1 214 438 6100

www.southportlogisticscenter.com

Although information has been obtained from sources deemed reliable, JLL does not make any guarantees, warranties or representations, express or implied, as to the completeness or accuracy as to the information contained herein. Any projections, opinions, assumptions or estimates used are for example only. There may be differences between projected and actual results, and those differences may be material. JLL does not accept any liability for any loss or damage suffered by any party resulting from reliance on this information. If the recipient of this information has signed a confidentiality agreement with JLL regarding this matter, this information is subject to the terms of that agreement. ©2023. Jones Lang LaSalle IP, Inc. All rights reserved.