

# 1900 Carnegie Avenue, Unit A

Santa Ana, CA 92705

For Sublease  $\pm 60,110$  s.f. Corporate Headquarters Facility



# Property Features



±60,110 s.f. R&D/ industrial space



±15,563 s.f. of R&D/assembly on 1st floor



±8,200 s.f. of class 10,000 and 100,000 clean rooms on 1st floor



±15,968 s.f. of office area on the 2nd floor



One (1) ground level door



Two (2) dock high doors (truckwell)



±24' Minimum warehouse clearance



1,600 amps (277/480 v) power



Fire sprinkler system (.45 GPM/3,000 s.f.)



±3:1,000 Parking ratio



Excellent access to John Wayne Airport, 5, 55, 405 and 73 freeways



Close proximity to many retail amenities



Sublease term through November 30, 2027

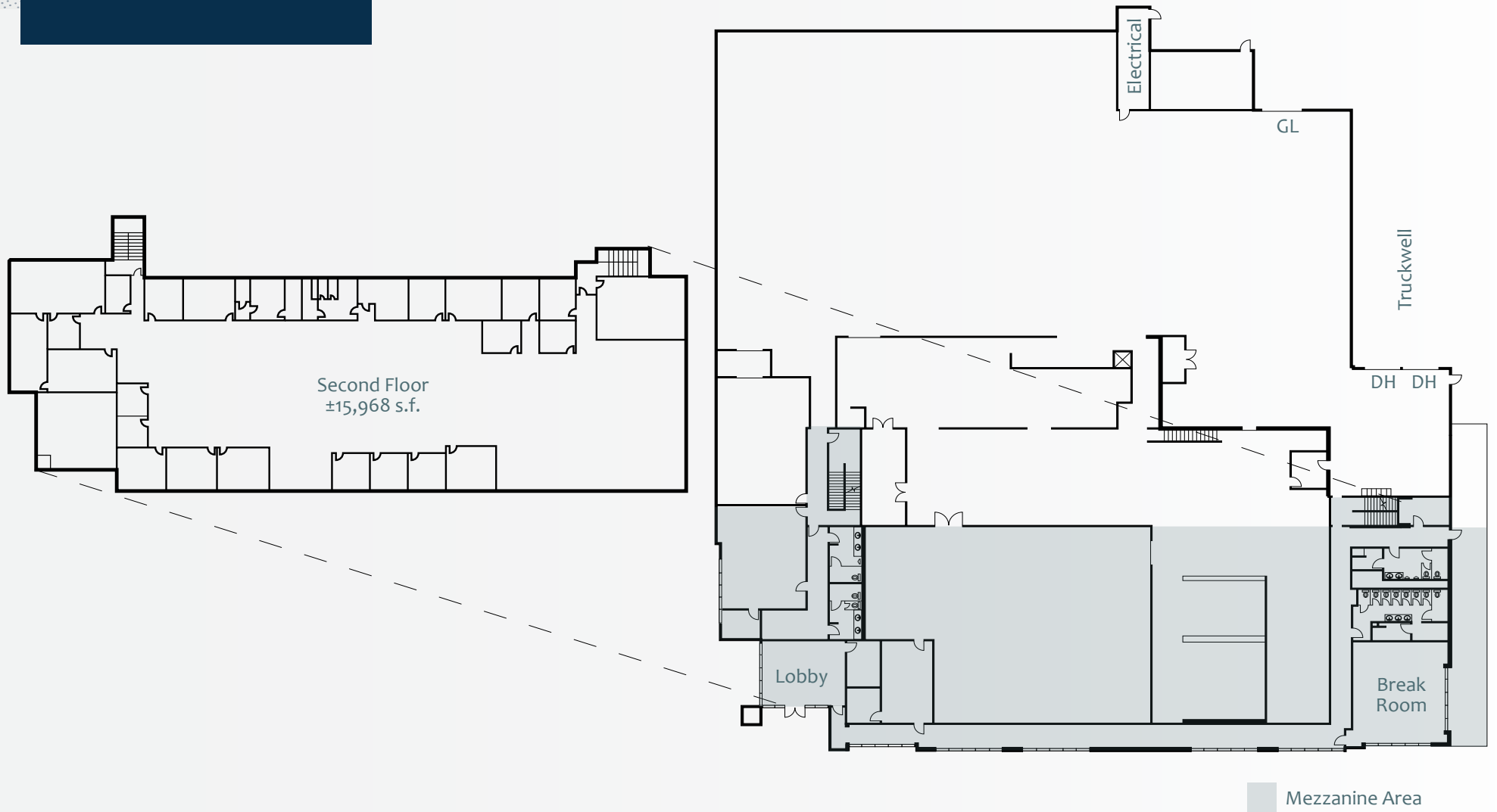




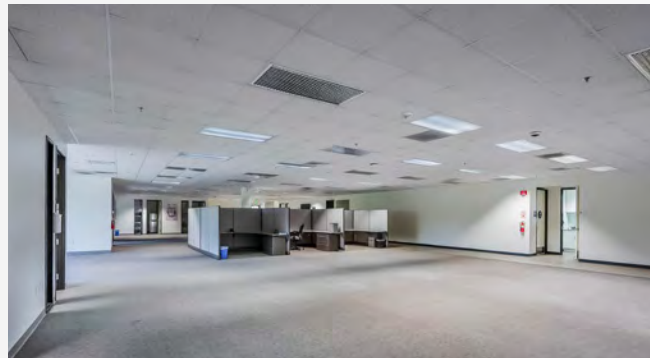
# Site Plan



# Floor Plan



# Photos





# 1900 Carnegie Avenue, Unit A

Santa Ana, CA 92705



## Contact Us

### Byron Foss

Managing Director  
+1 949 296 3615  
byron.foss@jll.com  
RE Lic. #01754265

### Curtis Ellmore

Managing Director  
+1 949 885 2929  
curtis.ellmore@jll.com  
RE Lic. #01781949

### Wade Tift

Managing Director  
+1 949 296 3605  
wade.tift@jll.com  
RE Lic. #01274371

### Nick Carey

Managing Director  
+1 949 296 3626  
nick.carey@jll.com  
RE Lic. #01456650



Although information has been obtained from sources deemed reliable, neither Owner nor JLL makes any guarantees, warranties or representations, express or implied, as to the completeness or accuracy as to the information contained herein. Any projections, opinions, assumptions or estimates used are for example only. There may be differences between projected and actual results, and those differences may be material. The Property may be withdrawn without notice. Neither Owner nor JLL accepts any liability for any loss or damage suffered by any party resulting from reliance on this information. If the recipient of this information has signed a confidentiality agreement regarding this matter, this information is subject to the terms of that agreement. ©2024 Jones Lang LaSalle IP, Inc. All rights reserved.