

The background of the entire image is a photograph of Meridian Plaza, a modern office building with a curved glass facade and a light-colored stone or concrete exterior. The building is situated on a city street with trees and a clear blue sky. A white text box is overlaid on the bottom right of the image, containing the building's name and address.

# MERIDIAN PLAZA

1415 L STREET

SACRAMENTO



## The premier business address of Downtown Sacramento's Capitol District

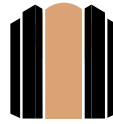
This gleaming Class A office building features timeless Art Deco design elements, exquisite lobby art and a soaring two-story lobby that greets tenants and guests with warm natural light. Located at the center of Sacramento's thriving Downtown with excellent proximity to the State Capitol, and robust amenities on-site and in the surrounding area, Meridian Plaza tenants enjoy the best of Sacramento.



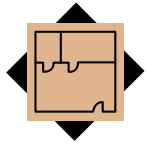
±1,289 TO 4,703 SQUARE FEET AVAILABLE



# Property Overview



Class A Office  
rising 12-stories on  
prestigious L Street



Move-in ready suites  
 $\pm$  1,289 RSF to  
 $\pm$  4,703 RSF



Strategic location saving  
tenants time across from  
the California State  
Capitol



Sweeping views of the  
State Capitol, Capitol  
Park, the Sierras and  
Downtown Skyline



Safe and secure  
with 24-hour on-site  
security staff



15 minutes from  
Sacramento  
International Airport



Walkable to popular  
coffee shops, watering  
holes and dining options  
for any occasion



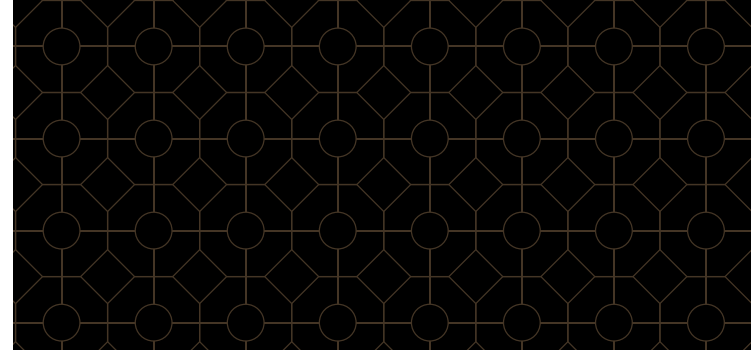
On-Site, 2/1,000  
parking



Fully equipped  
fitness center



Located adjacent to  
new SAFE Credit Union  
Performing Arts Center



# Building Amenities



Fitness Center fully equipped with cardio and weight machines, free weights and yoga room



Dry cleaning pick-up and delivery service



Professional On-Site Property Management and local hands-on ownership



Exquisite lobby art featuring famous local artists



Enhanced HVAC and Cleaning Specifications

Increased outside airflow into the building according to CDC guidelines for indoor air quality

Enhanced cleaning and sanitation throughout Building touch points

Detailed nightly professional janitorial cleaning

# Parking

2 parking stalls allocated for every 1,000 SF of office space leased

2 levels of secured subterranean parking

7 levels of structured parking at 1500 K Street



Valet and guest parking services are available



Building and parking garage are accessible after hours by security key card



MERIDIAN PLAZA LOBBY ART



FITNESS CENTER



# Meridian Plaza Lobby

Upon entering the lobby rotunda, tenants and guests are greeted with original works of art from several prominent local artists. Adorning the walls of the lobby are originals from:

Gregory Kondos

Tom Monteith

Matt Bult

Jian Wang

A hand-carved abstract sculpture by

John Buck

creates a striking focal point.

The art was selected for its representation of California's unique history and natural beauty.



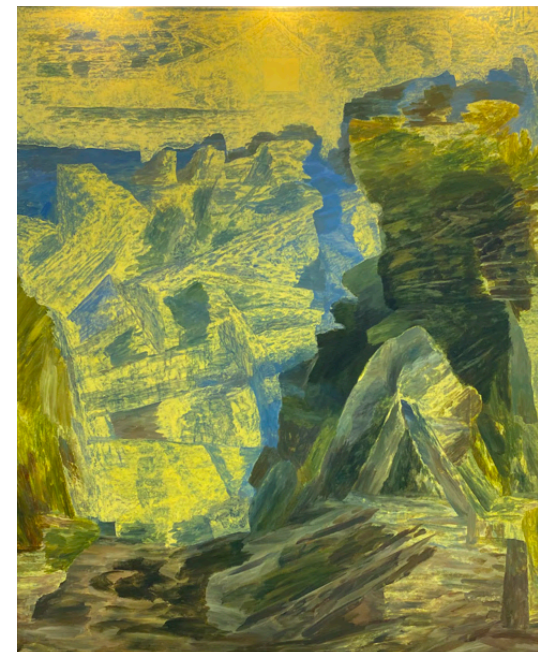
◀ MATT BULT  
"Yosemite Falls"



JIAN WANG  
"Golden Autumn  
in Gold Country"



▲ GREGORY KONDOS  
"Life on the River"



▲ TOM MONTEITH  
"Late in the Day"



# Availabilities

Suites range from

± 933 –  
4,334 RSF



SUITE 600  
± 4,344 RSF



VIEWS FROM  
SUITE 600



SUITE 1185  
± 1,289 RSF



SUITE 270  
± 1,880 RSF





DOCO Golden One Center

MERIDIAN  
PLAZA

1415 L STREET

Hyatt Regency Convention Center

Performing Arts Center

Marriot Residence Inn

## Location

A premier 229,000-square-foot office building in the heart of Downtown Sacramento, with panoramic views of Sacramento's skyline, the Sierras and the Capitol Dome.



# Area Overview



STATE CAPITOL



GOLDEN 1 CENTER AT DOWNTOWN COMMONS



SAFE CREDIT UNION PERFORMING ARTS





# TOP 10 THINGS TO DO in Downtown Sacramento

1

Cheers to the extensive tequila options offered at Mayahuel, while sampling their taco platter.



2

Customize your own wine flight at Downtown & Vine, with a selection of more than 20 rotating wines.



3

Enjoy classic & updated French dishes, wine & cocktails at Brasserie Capitale.



4

DOCO Golden One Center - Catch a Kings game or dine at one of the many restaurants such as Sauced BBQ and Polanco Cantina.



5

Catch an Off-Broadway show at the newly renovated SAFE Credit Union Performing Arts Center.



6

Dine at Revival at the Sawyer – a 200-seat restaurant on the third floor of the Kimpton Hotel that transforms into a high-spirited rooftop bar and lounge at night.



7

Take a Wide Open Walls walking art tour to view the latest murals & street art.



8

Challenge a client to a friendly game of mini golf at Flatstick Pub.



9

Scan the shelves at Allspicery, where more than 500 types of herbs and spices are available for your favorite foodie.



10

Enjoy city views from the rooftop deck of the Darling Aviary while sipping avian-inspired craft cocktails.





THE KIMPTON SAWYER



REVIVAL AT THE SAWYER





A low-angle, upward-looking photograph of a modern skyscraper with a grid-like facade of windows and light-colored panels. Several tall palm trees are in the foreground, partially obscuring the building. The sky is clear blue.

# MERIDIAN PLAZA

1415 L STREET

## Contact

GREG LEVI  
+ 1 916 491 4310  
License #: 00973235  
[greg.levi@jll.com](mailto:greg.levi@jll.com)

BERNARDO HUBBARD  
+ 1 916 491 4322  
License #: 02140127  
[bernardo.hubbard@jll.com](mailto:bernardo.hubbard@jll.com)



©2022 Jones Lang LaSalle IP, Inc. All rights reserved.  
All information contained herein is from sources  
deemed reliable; however, no representation or  
warranty is made to the accuracy thereof.