



# 485 FIFTH AVENUE

Premier Corner Retail Opportunity  
Bryant Park | NYC



For leasing information, please contact Exclusive Brokers:

**Matt J. Ogle**

+1 212 812 5982 | [matt.ogle@jll.com](mailto:matt.ogle@jll.com)

**Amanda Sujak**

+1 212 479 9865 | [amanda.sujak@jll.com](mailto:amanda.sujak@jll.com)





# 485 FIFTH AVENUE

Boutique Retail at the Northeast Corner of E. 41st Street

**Showcase your brand at the base of the Andaz Fifth Avenue Hotel, a 184-key luxury Hyatt offering**

**Located on Fifth Avenue shopping corridor, directly across the street from The New York Public Library and Bryant Park, which welcomes over 6 million visitors annually**

**In close proximity to Grand Central Terminal**



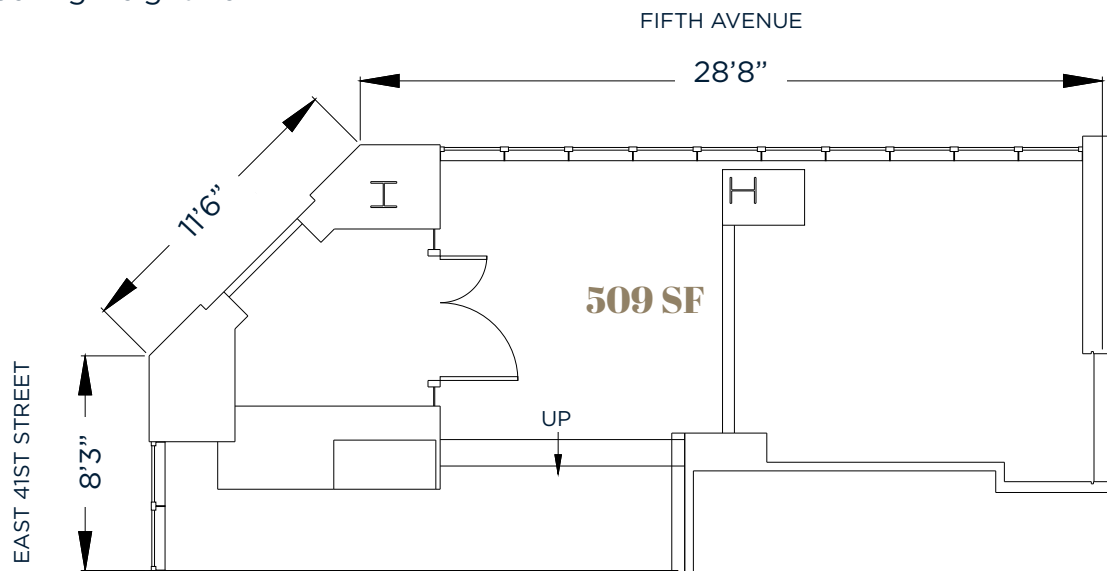


# 485 FIFTH AVENUE

Boutique Retail at the Northeast Corner of E. 41st Street



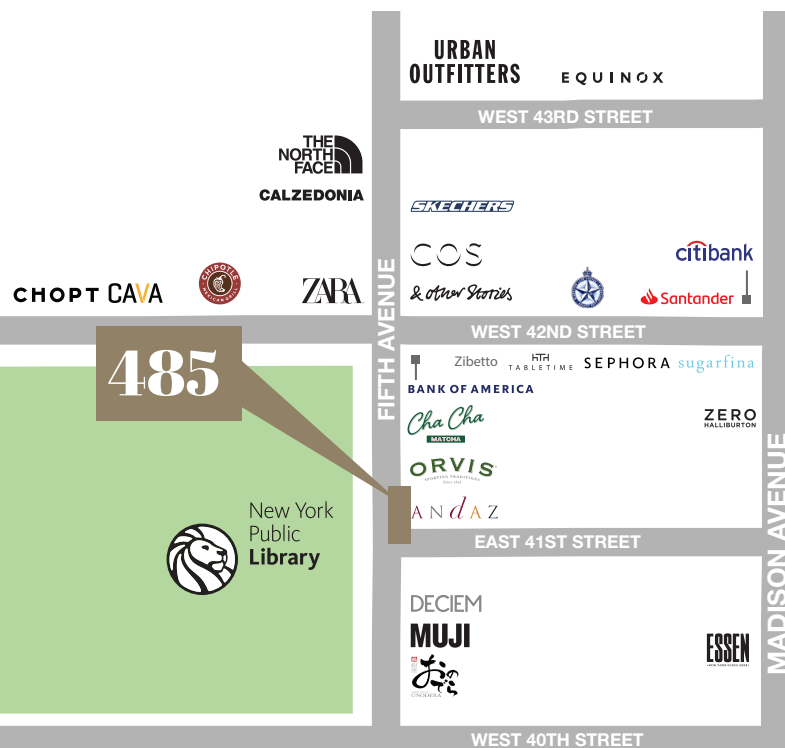
Ground Floor  
Ceiling Height: 16'





# 485 FIFTH AVENUE

Boutique Retail at the Northeast Corner of E. 41st Street



Jones Lang LaSalle Brokerage, Inc. | 330 Madison Avenue New York, NY 10017

DISCLAIMER Although information has been obtained from sources deemed reliable, neither Owner nor JLL makes any guarantees, warranties or representations, express or implied, as to the completeness or accuracy as to the information contained herein. Any projections, opinions, assumptions or estimates used are for example only. There may be differences between projected and actual results, and those differences may be material. The Property may be withdrawn without notice. Neither Owner nor JLL accepts any liability for any loss or damage suffered by any party resulting from reliance on this information. If the recipient of this information has signed a confidentiality agreement regarding this matter, this information is subject to the terms of that agreement.

©2023 Jones Lang LaSalle IP, Inc. All rights reserved.