



FOR SUBLEASE

200 Ottawa Ave NW | Grand Rapids, MI

5,612 RSF Available

 **JLL** SEE A BRIGHTER WAY

Property Highlights



200 Ottawa is strategically located between the medical mile and center of downtown. First floor space with exterior signage, lobby entrance and an exterior entrance on Ottawa Ave. Great combination of individual offices and open space. Furniture may be purchased. One of the best spaces currently on the market for lease. on-site cafe, on-site customer parking, parking beneath building & across the street from city hall.

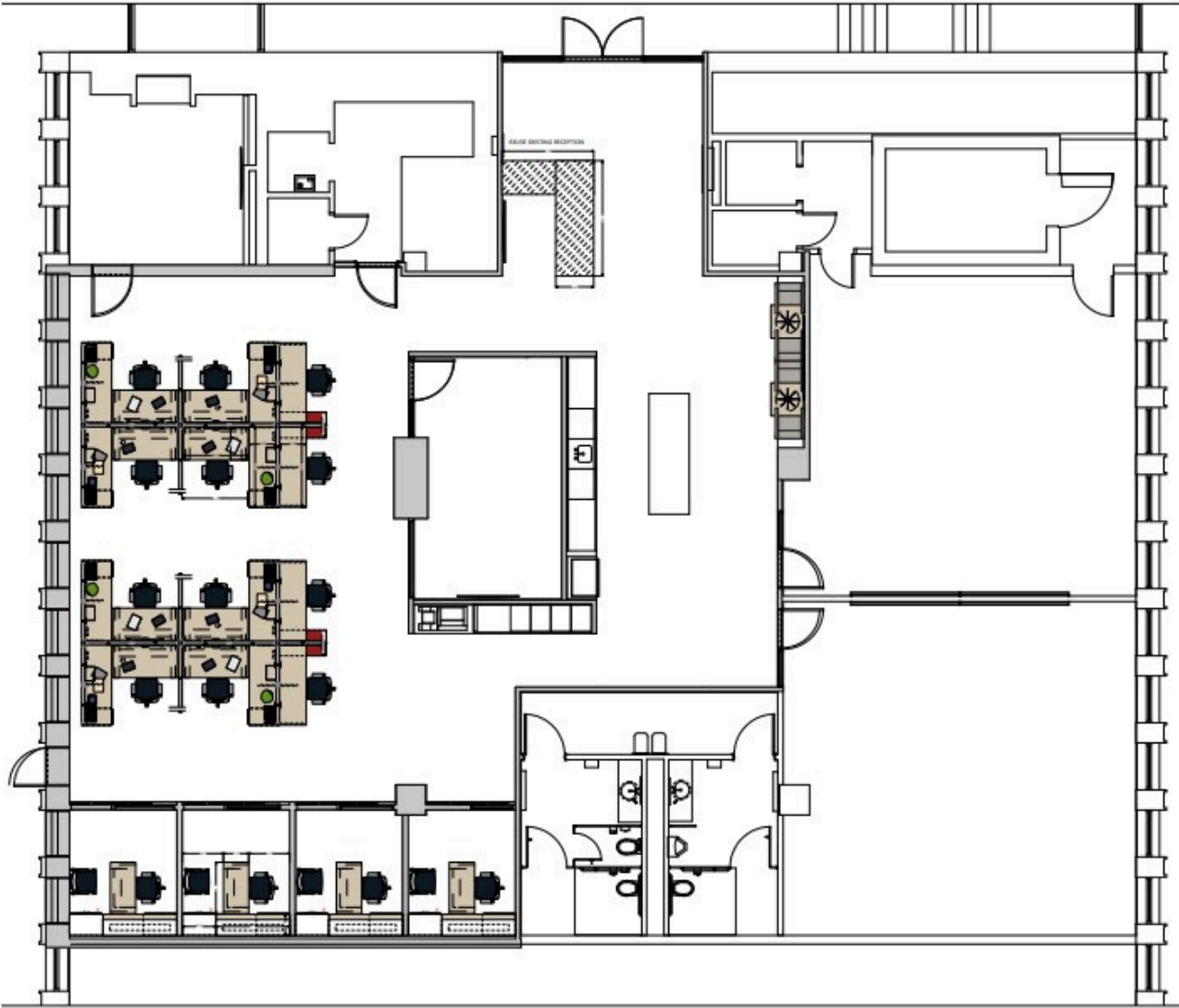


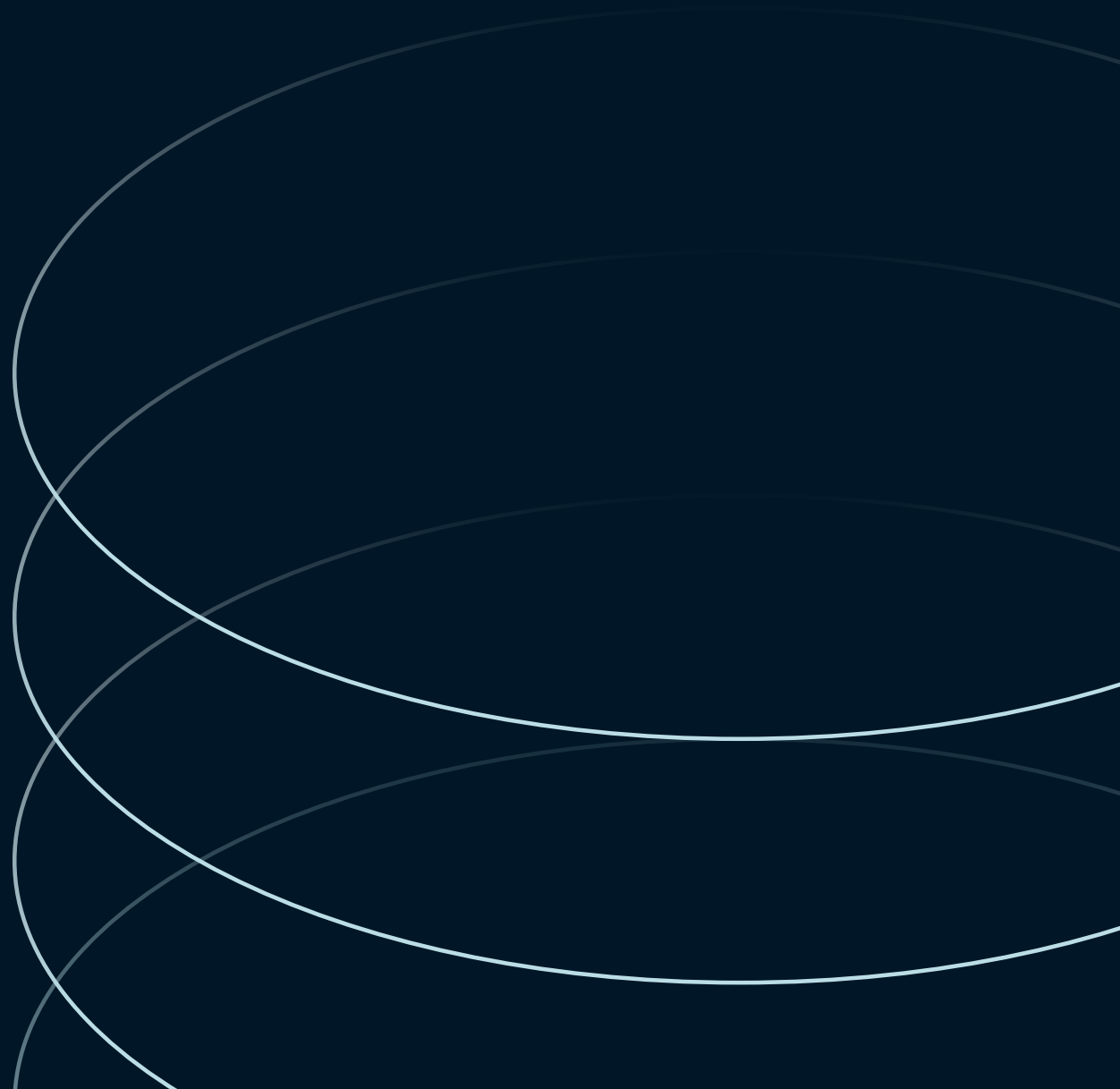
- \$19.95/MG
- Sublease through April, 2026
- Furniture may be purchased
- Great signage opportunities
- Off of First Floor Lobby
- Easy access to Highway system

Interior Photos



Floorplan



**Jeff Karger**

Executive Vice President
jeff.karger@jll.com
+1 616 649 3532

Sarah Noordyke

Associate, Brokerage
sarah.noordyke@jll.com
+1 989 615 0732