



# For lease

Up to ±5,902 RSF of office space available in the Historical East Village

**±5,902 RSF**

300 E Locust Street  
Des Moines, Iowa 50309

## Property specifications

Availability: 1,000 RSF – 5,902 RSF

- Suite 310: 2,502 RSF
- Suite 330: 1,000 RSF
- Suite 350: 2,400 RSF

Lease rate: \$11.75/RSF NNN

Est. OPEX: Available upon Request

- Metro Waste Building is located between the Iowa State Capitol and the Des Moines River in downtown Des Moines
- On-site parking available along with a parking ramp directly West of the building
- Located minutes from the Interstate & downtown Des Moines
- Conveniently located by hotels, restaurants, and entertainment venues

Contact broker for additional information

[jll.com/des-moines](http://jll.com/des-moines)  
Jones Lang LaSalle Brokerage, Inc.

**Lucas Hedstrom**

Vice President

+1 515 564 9269

[lucas.hedstrom@jll.com](mailto:lucas.hedstrom@jll.com)

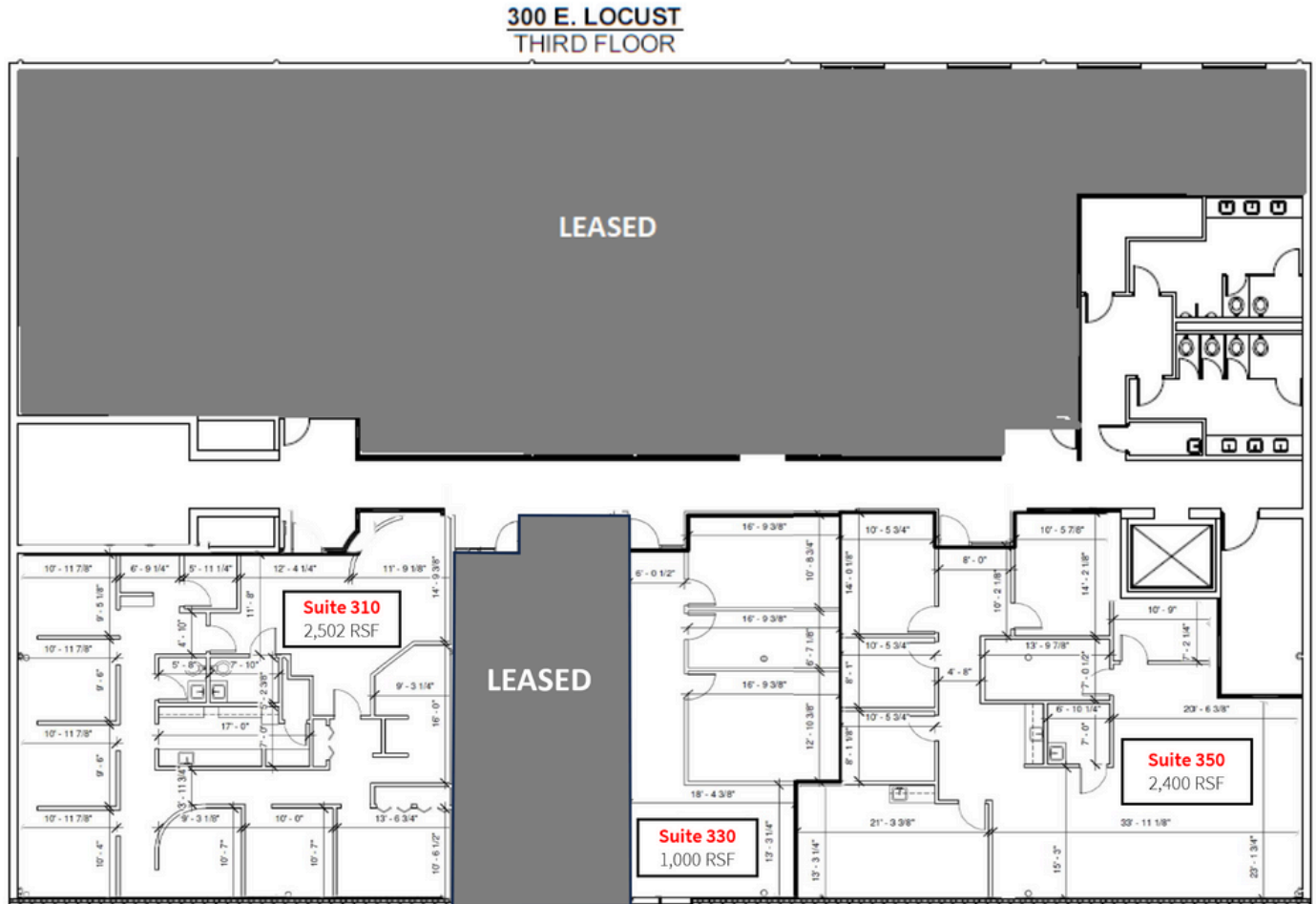
**Justin Lossner, CCIM, SIOR**

Senior Managing Director

+1 515 499 8679

[justin.lossner@jll.com](mailto:justin.lossner@jll.com)

## Floor plans | Overall



### Property specifications

Availability: 1,000 RSF – 5,902 RSF

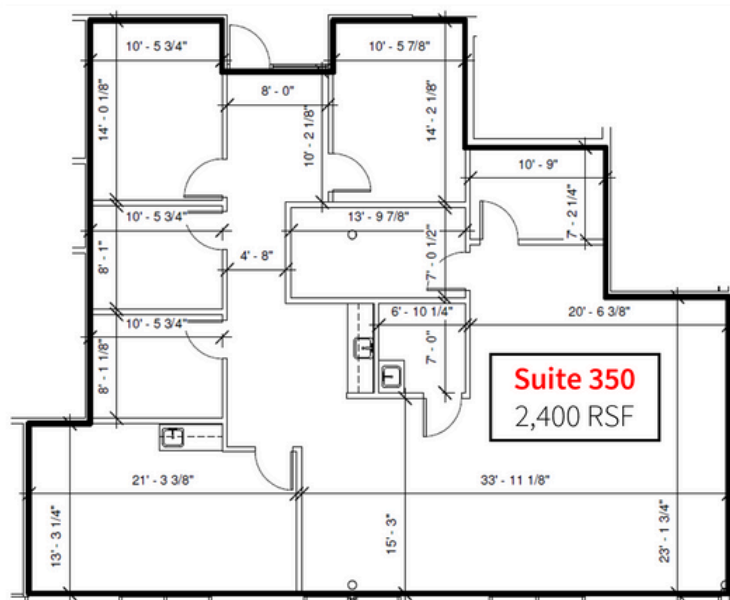
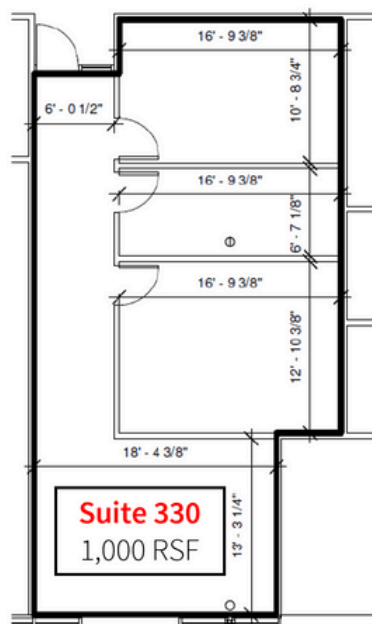
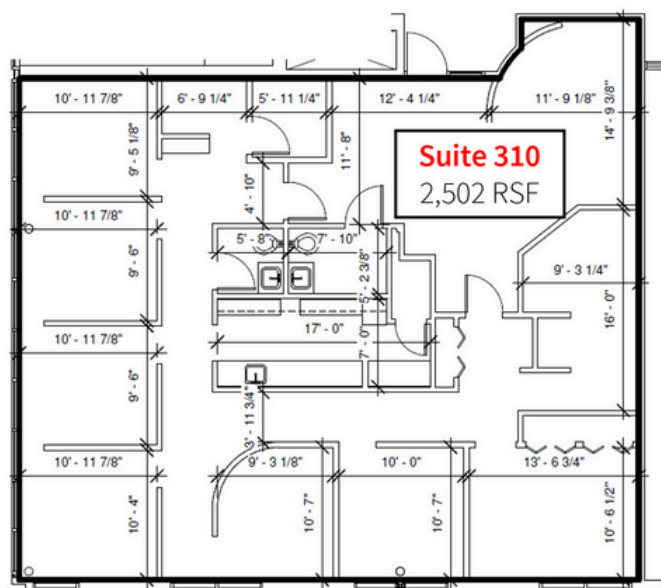
- Suite 310: 2,502 RSF
- Suite 330: 1,000 RSF
- Suite 350: 2,400 RSF

Lease rate: \$11.75/RSF NNN

Est. OPEX: Available upon Request

- Metro Waste Building is located between the Iowa State Capitol and the Des Moines River in downtown Des Moines
- On-site parking available along with a parking ramp directly West of the building
- Located minutes from the Interstate & downtown Des Moines
- Conveniently located by hotels, restaurants, and entertainment venues

## Floor plans | 3rd floor





# For lease

300 E Locust Street | Des Moines, Iowa 50309



Contact broker for  
additional information

**Lucas Hedstrom**  
Vice President  
+1 515 564 9269  
lucas.hedstrom@jll.com

**Justin Lossner, CCIM, SIOR**  
Senior Managing Director  
+1 515 499 8679  
justin.lossner@jll.com