

# For lease

1,000 Up to 2,995 SF Office/ Warehouse

11150 S. Lindbergh Business Court, St. Louis, MO 63123



**Under new ownership**  
Planned capital projects  
underway.

## Property specifications

**Size:** 1,000 up to 2,995 SF

**Office:** Build to suit

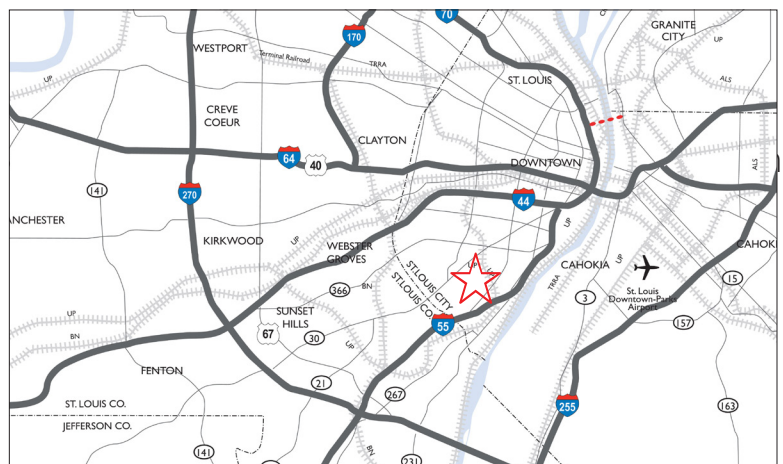
Suites can be combined

Move-in ready suites available

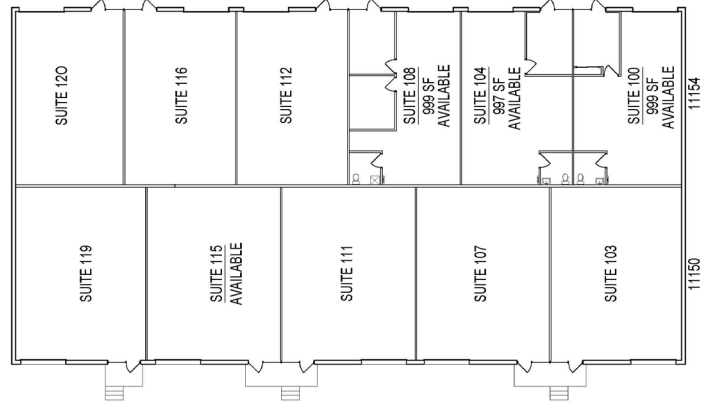
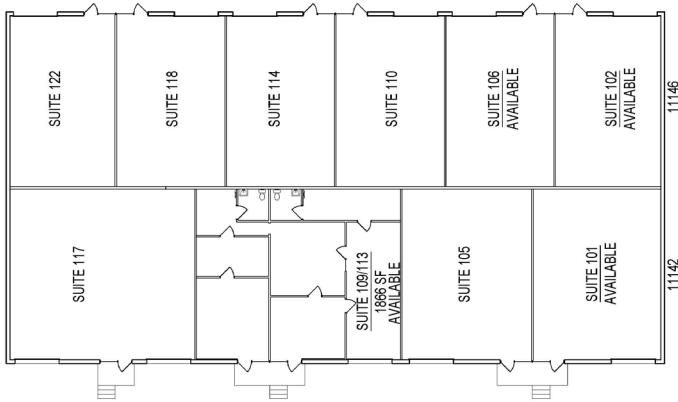
Dock and drive-in loading

14' clear height

**Asking rate: Contact broker**



## Floor plans



**Will Meehan**  
Senior Vice President  
+1 314 368 6201  
will.meehan@jll.com

[jll.com/st-louis](http://jll.com/st-louis)

JLL disclaimer (Texas): Although information has been obtained from sources deemed reliable, neither Owner nor JLL makes any guarantees, warranties or representations, express or implied, as to the completeness or accuracy as to the information contained herein. Any projections, opinions, assumptions or estimates used are for example only. There may be differences between projected and actual results, and those differences may be material. The Property may be withdrawn without notice. Neither Owner nor JLL accepts any liability for any loss or damage suffered by any party resulting from reliance on this information. If the recipient of this information has signed a confidentiality agreement regarding this matter, this information is subject to the terms of that agreement. ©2024 Jones Lang LaSalle IP, Inc. All rights reserved.