

3,300 RSF for Sublease

Turnkey Medical Clinic Space

Located in the heart of The Historic 3rd Ward at Cityside Plaza

239 E. Chicago St., Milwaukee, WI 53202

Jones Lang LaSalle Brokerage, Inc. a licensed real estate broker.



Disclaimer: Although information has been obtained from sources deemed reliable, Owner, Jones Lang LaSalle, and/or their representatives, brokers or agents make no guarantees as to the accuracy of the information contained herein, and offer the Property without express or implied warranties of any kind. The Property may be withdrawn without notice. If the recipient of this information has signed a confidentiality agreement regarding this matter, this information is subject to the terms of that agreement. ©2024. Jones Lang LaSalle. All rights reserved.

Suite 101

239 E. Chicago St.
Milwaukee, WI 53202



3,300
Available RSF



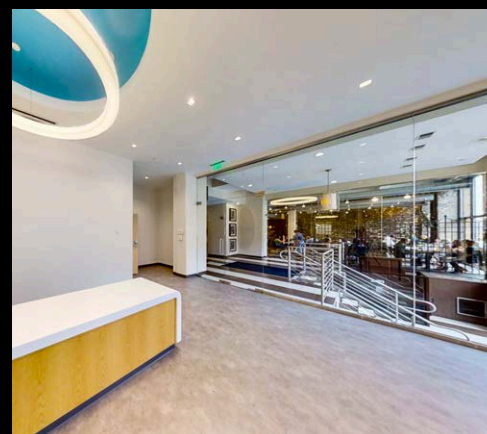
03/31/34
Sublease expiration



Negotiable
Sublease rate / SF

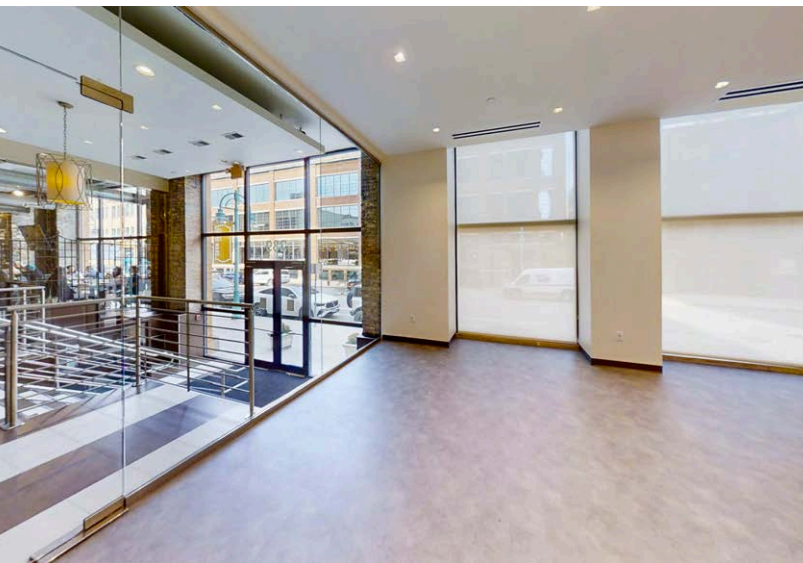
Sublease highlights

- Brand new medical buildout, available immediately
- Located in a mixed-use building
 - Cityside Plaza Condos, Sweet Diner, & District Fore
- Premier visibility & benefits from a strong 3rd Ward tenant mix
- Within walking distance to a variety of food, shopping & entertainment
- Estimated 2024 Opex; \$5.25 / RSF



Suite 101: 3,300 RSF

239 E. Chicago St.
Milwaukee, WI 53202

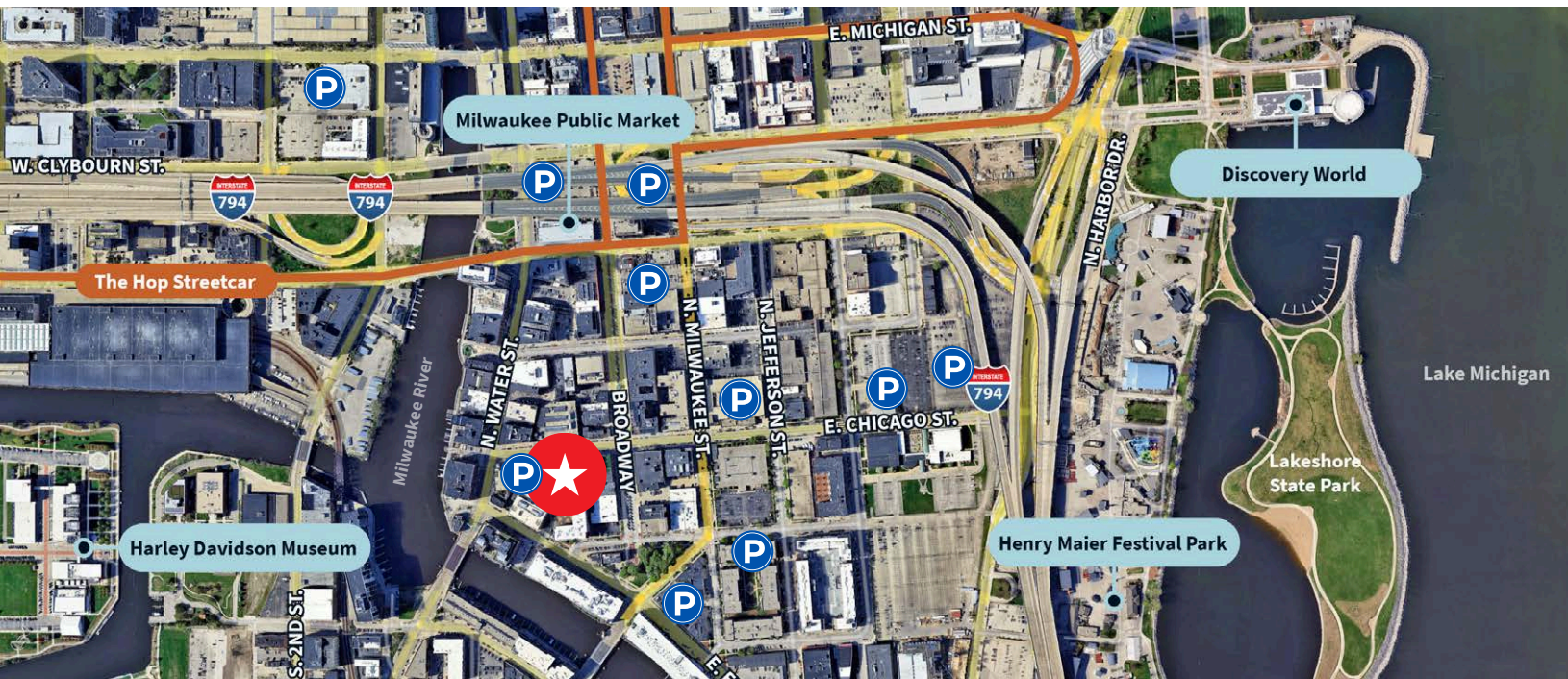


239 E. Chicago St. Milwaukee, WI 53202

Discover the perks of being located in a brand new clinic in Milwaukee's Historic Third Ward. Enjoy nearby dining, entertainment, shopping, and scenic walks along the River Walk. Minutes from Milwaukee's lakefront, this facility blends modern healthcare with the charm of this sought-after neighborhood.

Walking Distances

- Milwaukee River Walk: 2 minutes
- Milwaukee Public Market: 5 minutes
- Hop Streetcar: 5 minutes
- Henry Maier Festival Park: 12 minutes
- Milwaukee Intermodal Station: 14 minutes



Contact

Nick Hepner

Vice President

+1 414 944 2107

nick.hepner@jll.com