

For lease

22,234 SF on 1.6 AC available

1800 Scherer Parkway, St. Charles, MO 63033



Property specifications

Size: 22,234 SF on 1.6 AC

Office: 2,520 SF newly remodeled

Storage: Fenced outside w/ bonus utility building

Drive-ins: 4

Clear height: 14'

Docks: 4 dock high doors

Lighting: LED lighting

Power: Heavy power

Contact broker for pricing



1800 Scherer Parkway, St. Charles, MO

Advantages and amenities



22,234 SF on **1.6 acres**



2,520 SF newly remodeled office



Fenced outside storage
with bonus **utility building**



Approximately
14' clear height



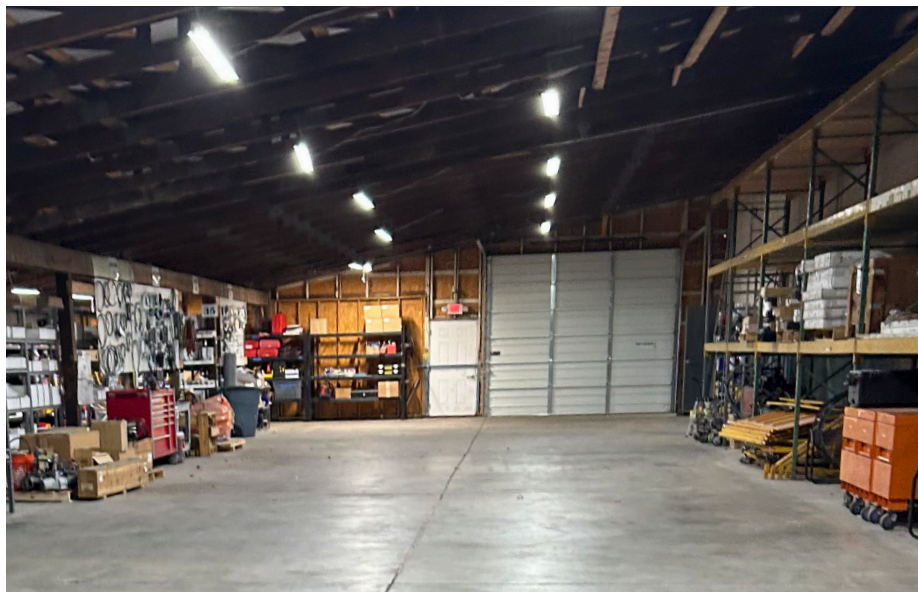
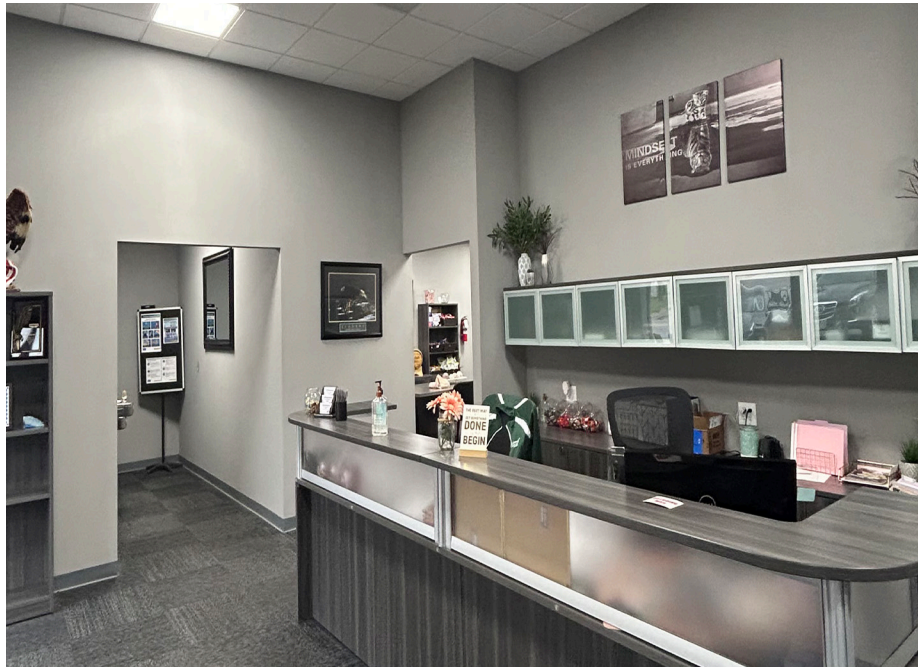
4 dock-high loading docks
with **4 drive-ins**



Ample LED lighting



Heavy power



22K

Square feet

4

Dock high doors

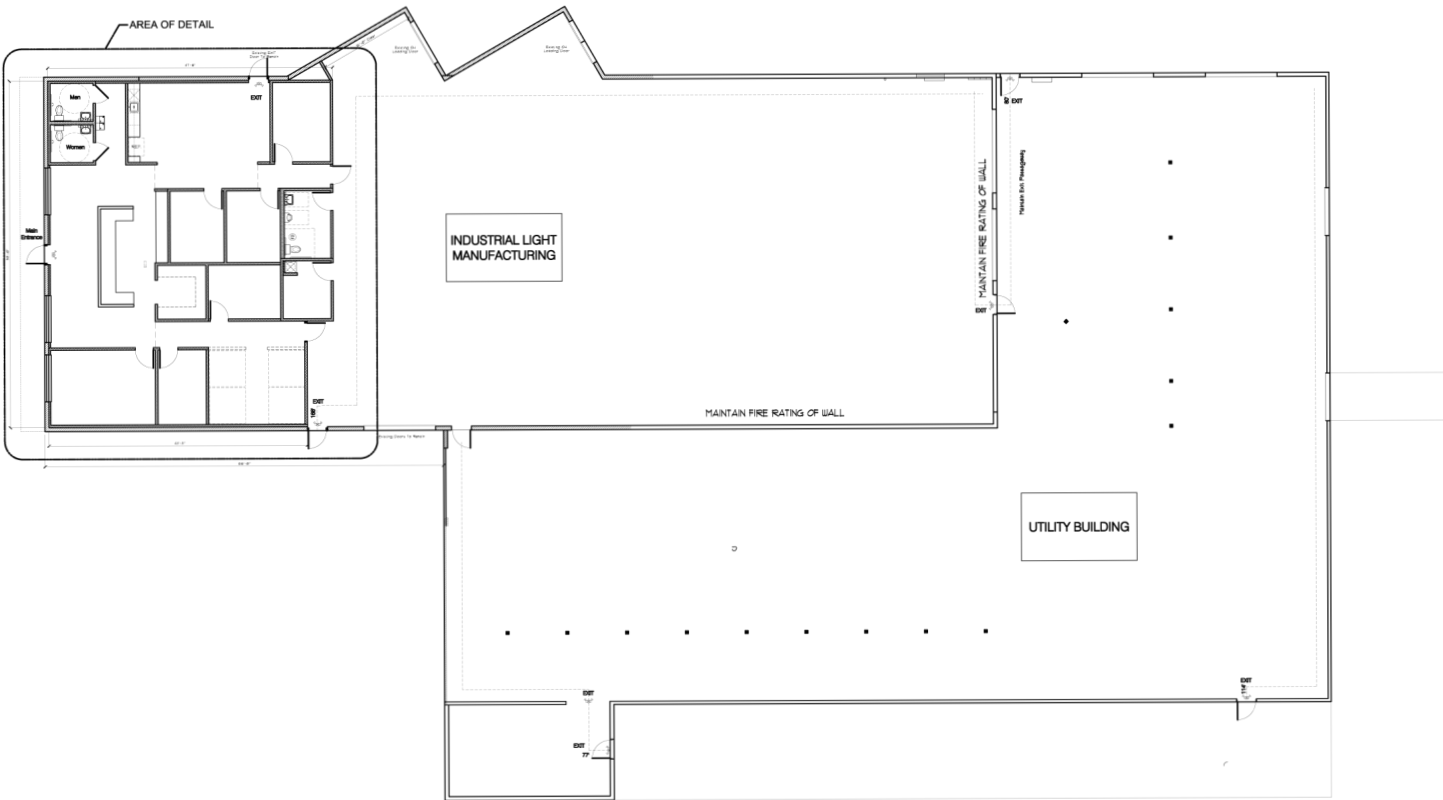
14'

Clear height

4

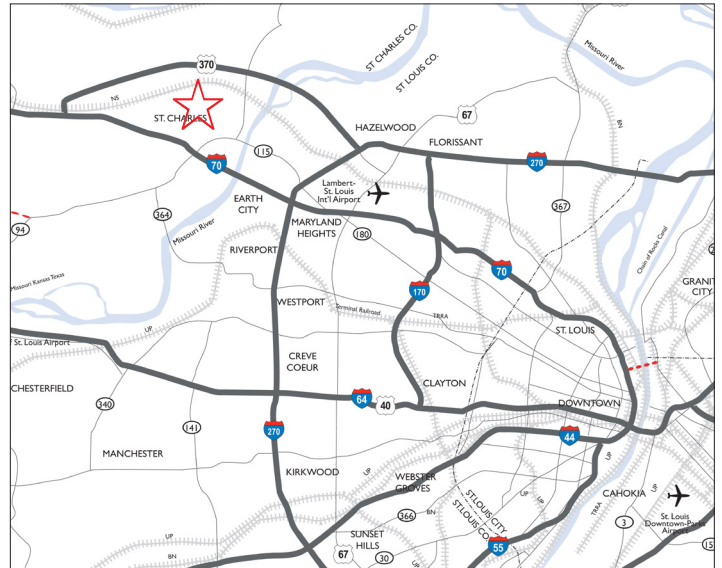
Drive-ins

1800 Scherer Parkway, St. Charles, MO



Prime location with easy accessibility

St. Charles boasts excellent accessibility with its strategic location and well-developed transportation infrastructure. The city is served by I-70 and MO-370, providing easy connections to St. Louis and other surrounding areas. Additionally, St. Charles offers convenient access to Lambert-St. Louis International Airport, which is approximately 10 miles away.



Will Meehan
Senior Vice President
+1 314 368 6201
will.meehan@jll.com

jll.com/st-louis