

For Subleas

2262 Rutherford Road Suite 100
Carlsbad

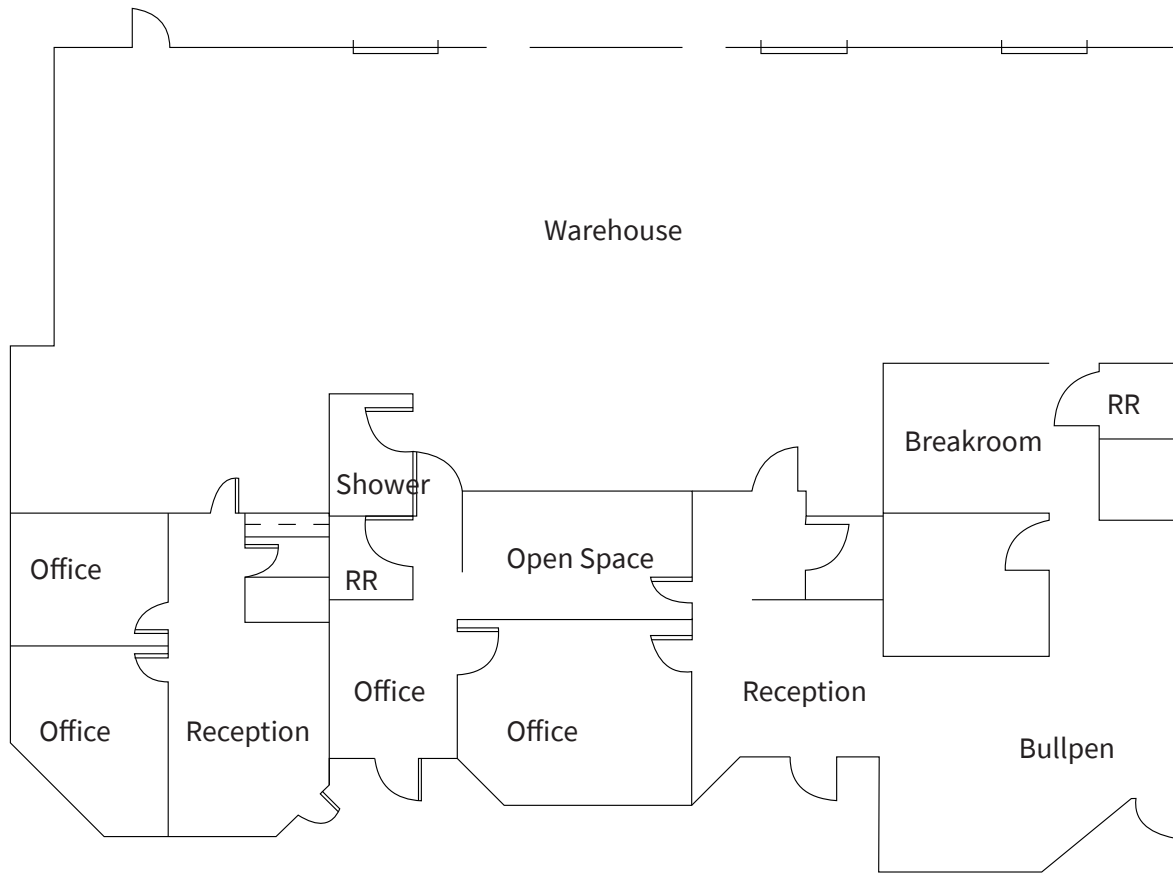


PROPERTY HIGHLIGHTS

- ±6,484 SF
- High image industrial business park within the Carlsbad Research Center
- Four (4) grade level loading doors
- 3.3/1,000 parking
- Available September 2024
- Master lease expires 6/30/25
- Longer lease term available
- **Contact brokers for more details**



CHRIS BAUMGART, SIOR
T +1 858 410 6336
chris.baumgart@jll.com
RE License #01888224



CHRIS BAUMGART, SIOR
T +1 858 410 6336
chris.baumgart@jll.com
RE License #01888224

