



# For Lease

1432 K Street NW, Washington, DC

- **Suite 101:** ~3,100 SF available on corner of K and 15th Streets NW
  - ~1,600 on ground level
  - ~1,500 SF on lower level
- **Suite 100:** 585 SF available on ground level along 15th Street NW
- Excellent foot traffic along 15th and K Street with outdoor seating
- Prominent corner located directly across from McPherson Square
- High foot traffic and visibility along K Street NW with 23,009 VPD
- 17.2M SF of office space and over 3,000 hotel rooms within a 0.25 mile radius

## Nearby Retailers



## Demographics

(Radius of .25 mile, .5 mile, and 1 mile)

### Population

137	10,625	67,523
-----	--------	--------

### Average HH Income

\$94,695	\$124,677	\$157,884
----------	-----------	-----------

### Households

115	7,052	37,794
-----	-------	--------

### Employees

31,992	92,349	199,622
--------	--------	---------

### Median Age

32.5	33.9	33.8
------	------	------

For more information,  
please contact:

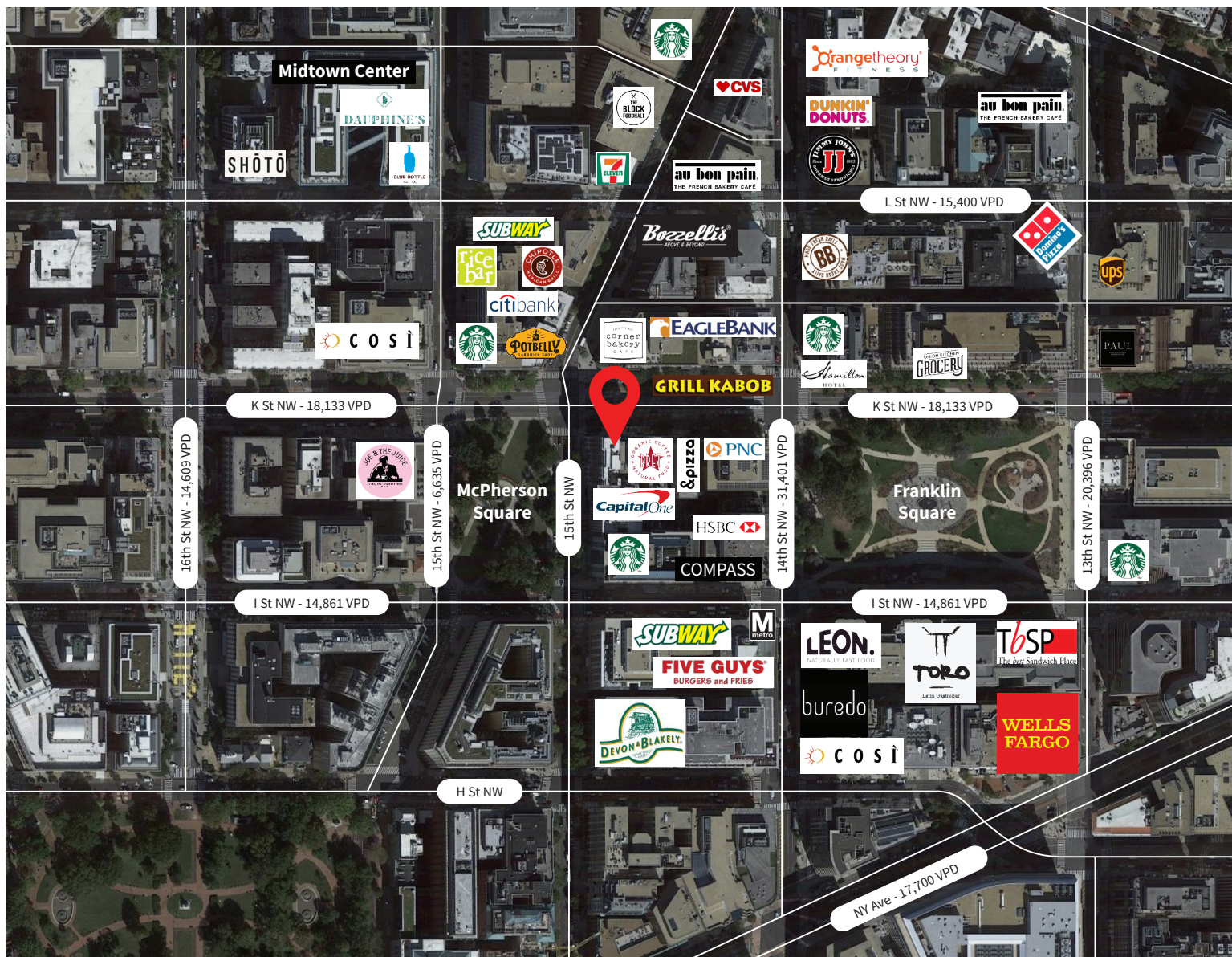
Andy Corno  
O: +1 202 719 6137  
M: +1 301 520 2620  
[andy.corno@jll.com](mailto:andy.corno@jll.com)

Thomas Jackman  
O: +1 202 719 5624  
M: +1 301 580 1512  
[thomas.jackman@jll.com](mailto:thomas.jackman@jll.com)



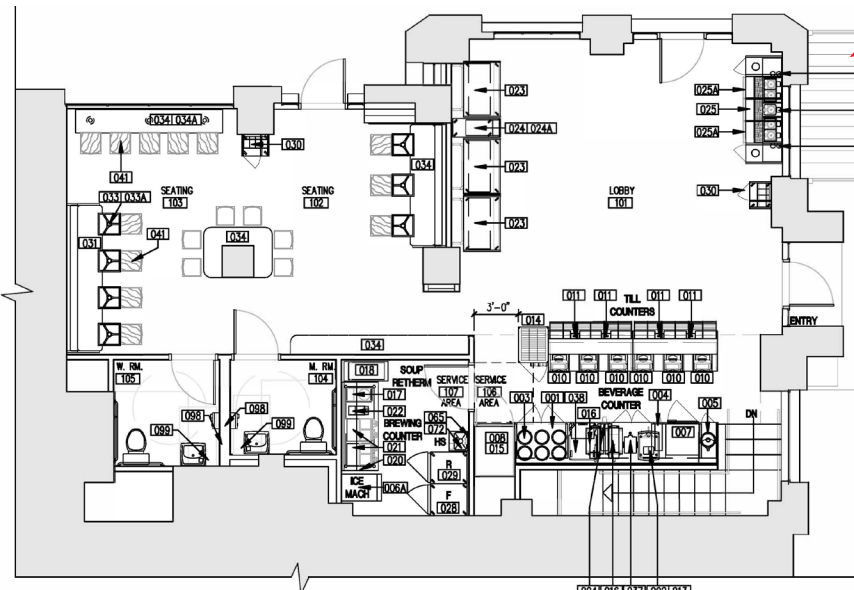
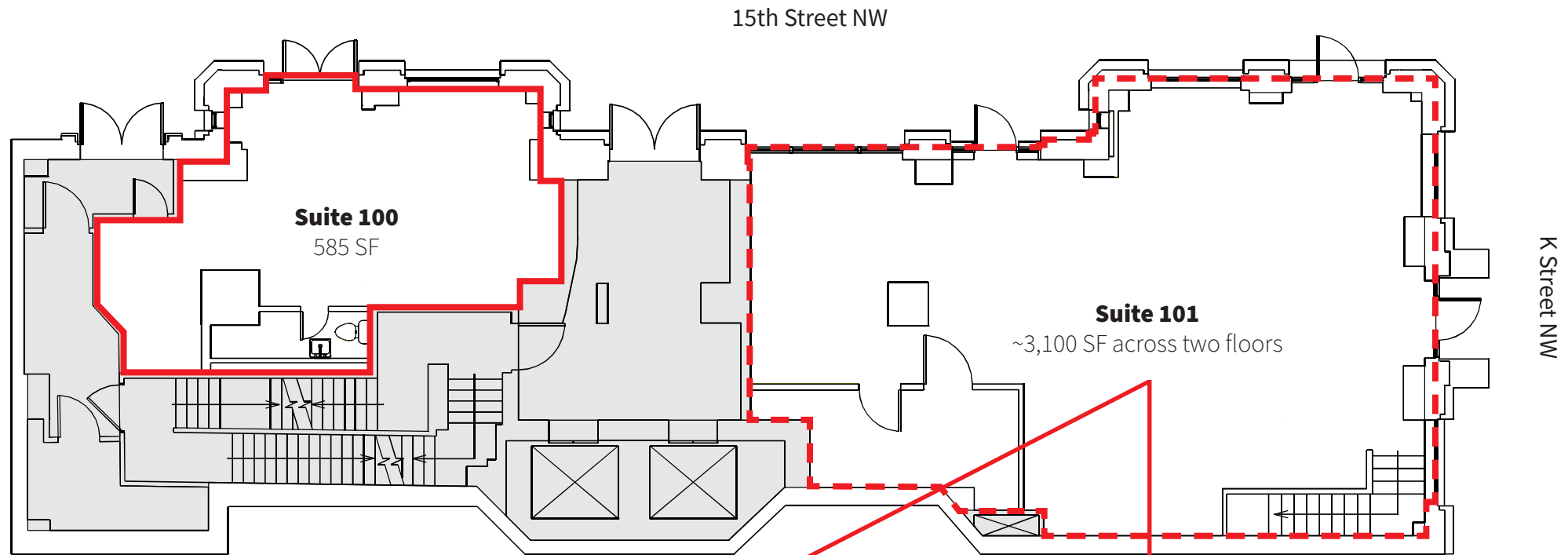


# Trade Area



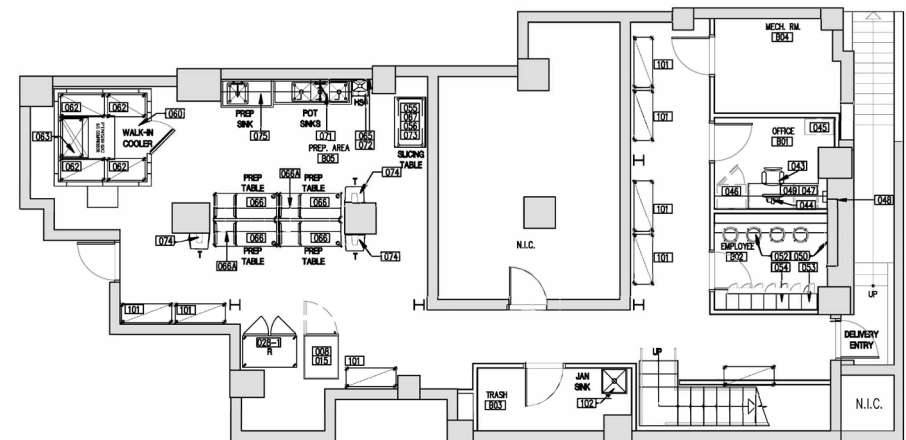
 RIDERS PER DAY	<b>Farragut North</b> 23,125	<b>Farragut West</b> 20,408	<b>McPhearson Square</b> 14,462
---	---------------------------------	--------------------------------	------------------------------------

# The availabilities



**Suite 101 - Ground Level**

~1,600 SF



**Suite 101 - Lower Level**

~1,500 SF



# 1432 K Street NW

Prominent corner located directly across from McPherson Square

For more information,  
please contact:

---

Andy Corno

O: +1 202 719 6137

M: +1 301 520 2620

[andy.corno@jll.com](mailto:andy.corno@jll.com)

Thomas Jackman

O: +1 202 719 5624

M: +1 301 580 1512

[thomas.jackman@jll.com](mailto:thomas.jackman@jll.com)

