



SAFARI

BUSINESS CENTER

Ontario, California

FOR LEASE

±5,000 SF - ±24,000 SF AVAILABLE
HIGH-IMAGE MULTI-TENANT BUSINESS PARK

[VISIT WEBSITE](#)



**Rexford
Industrial**



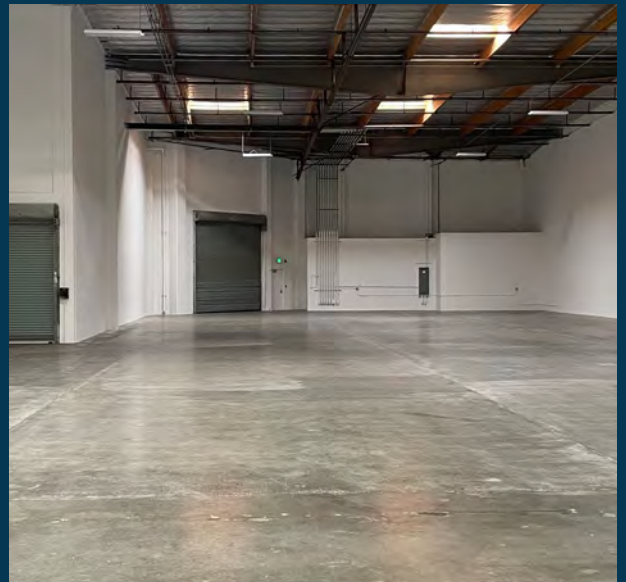
Available Units

| Bldg/Unit | Address | Total SF | Office SF | DH Doors | GL Doors | Clr. Ht. | AMPS | \$ PSF | CAM PSF |
|-----------|-----------------------|----------|-----------|----------|----------|----------|------|--------|---------|
| 15/7 | 1898 Carlos Ave. ** | ±5,652 | ±1,766 | 0 | 1 | 24' | 200 | \$1.55 | \$0.07 |
| 9/6 | 2027 Cedar St. *** | ±6,458 | ±1,241 | 0 | 2 | 24' | 400 | \$1.55 | \$0.07 |
| 7/4 | 1925 Vineyard Ave. | ±12,944 | ±975 | 2 | 1 | 14' | 400 | \$1.50 | \$0.07 |
| 9/4 | 1931 Lynx Pl. | ±13,503 | ±1,230 | 1 | 1 | 24' | 400 | \$1.50 | \$0.07 |
| 10/5 | 1950 S. Carlos Ave. | ±13,634 | ±861 | 1 | 1 | 24' | 400 | \$1.50 | \$0.07 |
| 7/6 | 1941 Vineyard Ave. ** | ±13,765 | ±1,650 | 2 | 1 | 24' | 400 | \$1.55 | \$0.07 |
| 17/1 | 1845 Vineyard Ave. * | ±14,324 | ±2,375 | 2 | 1 | 24' | 400 | \$1.55 | \$0.07 |
| 2/3 | 1936 Cedar St. | ±15,691 | ±1,562 | 1 | 1 | 24' | 400 | \$1.50 | \$0.07 |
| 6/1 | 2018 E. Cedar St. | ±24,006 | ±2,821 | 2 | 1 | 24' | 400 | \$1.45 | \$0.07 |

* Available January 2025

** Available February 2025

*** Available March 2025



FRANCIS ST



CARLOS AVE

CEDAR ST



Available



PROPERTY HIGHLIGHTS

- High image state-of-the-art business park
- 16 industrial buildings totaling 1,143,104 square feet
- Units range in size from $\pm 5,000$ SF - $\pm 35,000$ SF
- Parking ratio of 1:1,000 SF
- M2 general industrial zoning
- .45 or .60 GPM/3,000 sprinkler system
- Immediate access to the I-10, I-15 and SR-60 freeways
- Landscape and theme lighting in addition to parking lot and security lighting
- Truck-well and ground-level loading with ample truck staging and maneuverability
- Loading dock doors with automatic levelers on most units

Although information has been obtained from sources deemed reliable, neither Owner nor JLL makes any guarantees, warranties or representations, express or implied, as to the completeness or accuracy as to the information contained herein. Any projections, opinions, assumptions or estimates used are for example only. There may be differences between projected and actual results, and those differences may be material. The Property may be withdrawn without notice. Neither Owner nor JLL accepts any liability for any loss or damage suffered by any party resulting from reliance on this information. If the recipient of this information has signed a confidentiality agreement regarding this matter, this information is subject to the terms of that agreement. ©2024 Jones Lang LaSalle IP, Inc. All rights reserved. Jones Lang LaSalle Brokerage, Inc. License #: 01856260

Contact

JAY CUCCIA
+1 909 467 6911
jay.cuccia@jll.com
California DRE # 02116318

SCOTT COYLE
+1 909 467 6870
scott.coyle@jll.com
California DRE # 02066670

JEFF BELLITTI
+1 909 467 6881
jeff.bellitti@jll.com
California DRE # 01232571

MAC HEWETT
+1 909 467 6902
mac.hewett@jll.com
California DRE # 01920070



**Rexford
Industrial**

