



111 Sego Lily Drive **Plug and Play Sublease**



JLL
Jones Lang LaSalle
Brokerage, Inc.

Sandy, Utah 84070

Up to 16,691 RSF



111 Sego Lily Drive **Sublease**

Up to 16,691 SF

Available Now

\$24.50 FSG

Lease Rate

NOW

Availability Date

09/30/2025

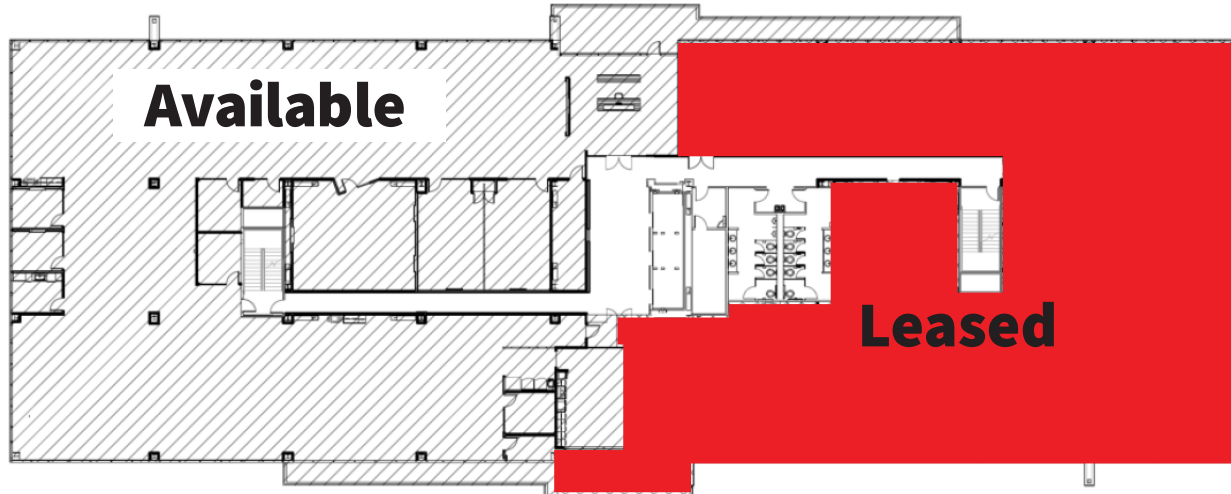
LXD **Landlord willing to entertain longer term deals*

Plug and Play

Fully furnished floor with floor to ceiling glass

Building Highlights

- Excellent access to I-15
- Floor to ceiling glass
- LEED Silver Design
- Exercise facility with lockers and showers
- Walkable to Sandy TRAX Station
- Close proximity to The Shops at South Town and many additional amenities
- Structured parking
- EV chargers onsite
- Large breakroom with exterior balcony
- Game room with bike racks
- Multiple conference and collaboration rooms





For more information, please contact:

Jillian Johnson

+1 801 456 9517

jillian.johnson@jll.com

David Nixon

+1 801 456 9518

david.nixon@jll.com



Jones Lang LaSalle Brokerage, Inc.

©2024 Jones Lang LaSalle LP, Inc. All rights reserved. All information contained herein is from sources deemed reliable; however, no representation or warranty is made to the accuracy thereof.