 **JLL** SEE A BRIGHTER WAY

For lease

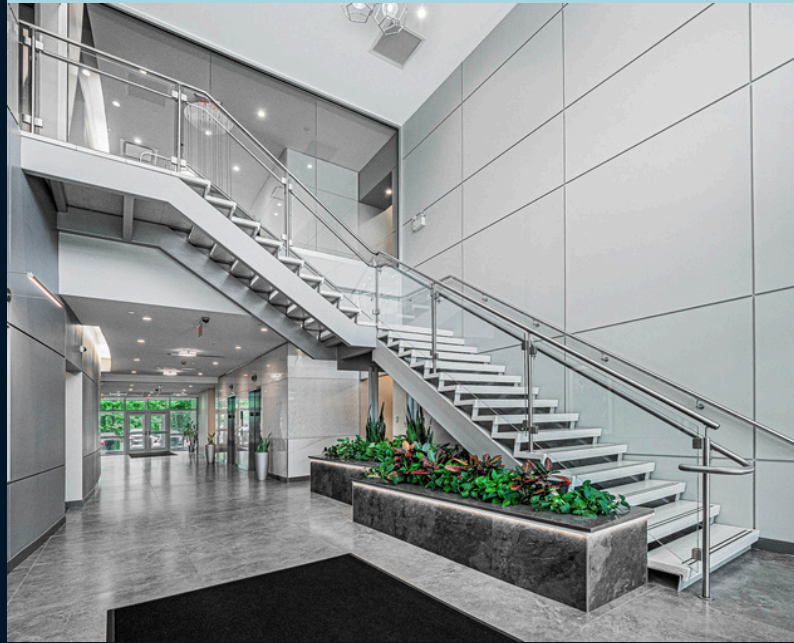
450 Plymouth Road
Interchange Corporate Center
Plymouth Meeting, PA

First floor: 11,233 SF (5,585 SF & 5,648 SF)
Second floor: 5,045 SF

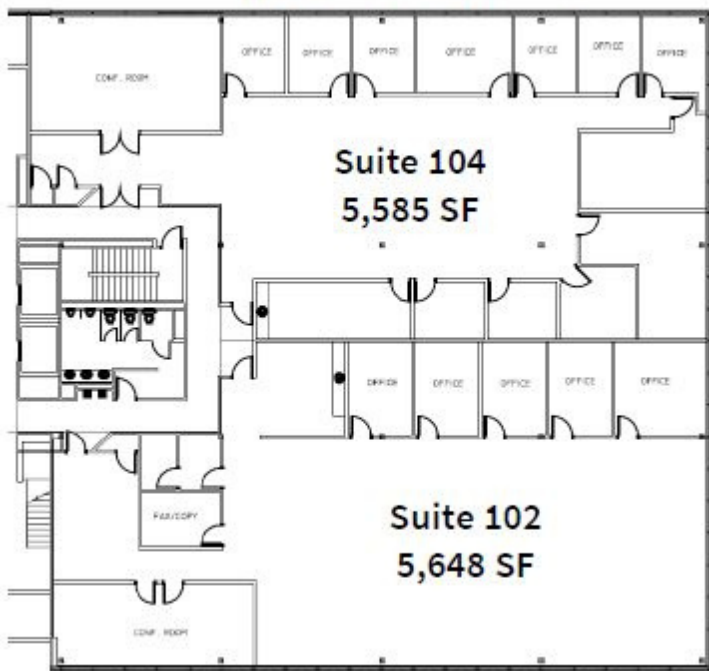
Property specifications

- Available immediately
- Fitness center in the building
- Two story atrium lobby with stone, steel and wood finishes
- State of the art energy management system
- Basement storage/humidity-controlled space
- Conveniently located to all major highways, public transportation, newly renovated Plymouth Meeting Mall, shops and restaurants

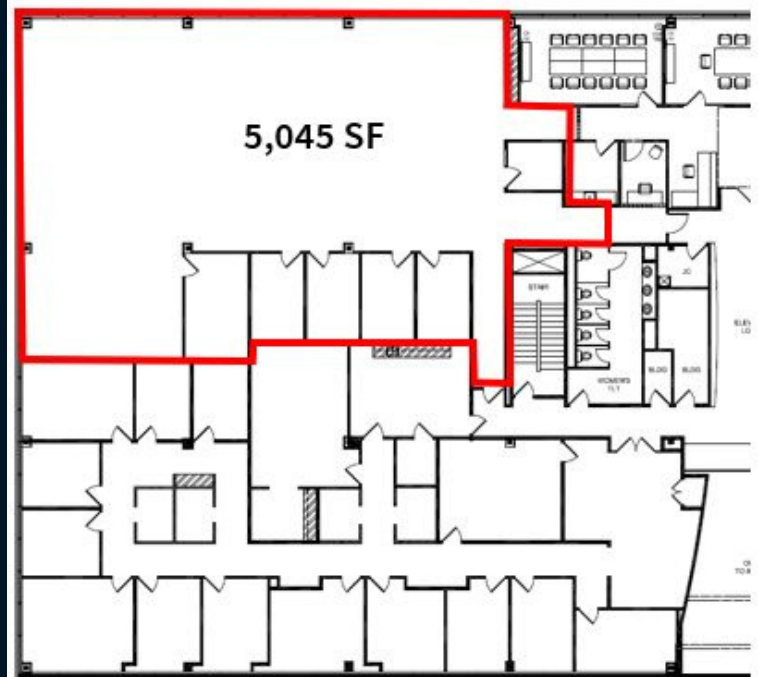
450 Plymouth Road Interchange Corporate Center Plymouth Meeting



First Floor - 11,233 SF



Second Floor



John Perkins

john.perkins@jll.com

+1 610 715 1815

Jones Lang LaSalle Brokerage, Inc.

550 E. Swedesford Road, Suite 260, Wayne, PA 19087

+1 610 249 2255

jll.com

Although information has been obtained from sources deemed reliable, neither Owner nor JLL makes any guarantees, warranties or representations, express or implied, as to the completeness or accuracy as to the information contained herein. Any projections, opinions, assumptions or estimates used are for example only. There may be differences between projected and actual results, and those differences may be material. The Property may be withdrawn without notice. Neither Owner nor JLL accepts any liability for any loss or damage suffered by any party resulting from reliance on this information. If the recipient of this information has signed a confidentiality agreement regarding this matter, this information is subject to the terms of that agreement. ©2024. Jones Lang LaSalle IP, Inc. All rights reserved.